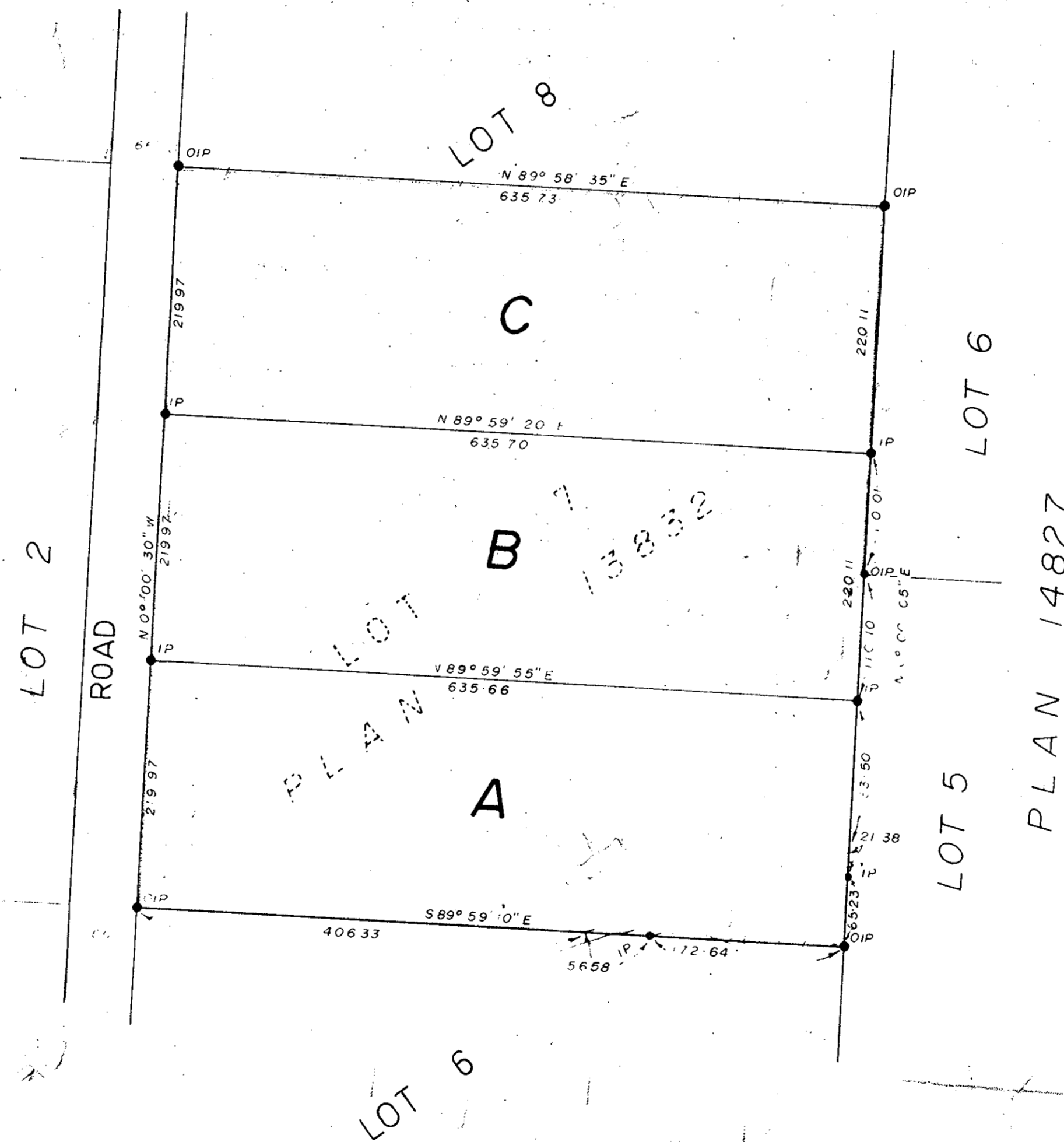


Plan of:  
 Subdivision of Lot 7, Plan 13832,  
 District Lot 1598.  
 CARIBOO DISTRICT.

Scale: 1" to 100'

PLAN No 16712  
 Deposited in the Land Registry Office  
 at Prince George on the 22 day of Dec. 1966

*[Signature]*  
 Registrar



Bearings are astronomic and are derived from  
 OIP's along the West boundary of Lot 7,  
 Plan 13832, District Lot 1598.

Legend:  
 ⊙ P Con Standard Concrete Post  
 ⊙ P Rock Standard Rock Post  
 ● PP Standard Pipe Post  
 ● IP Standard Iron Post  
 ○ P Wooden Post  
 ■ LP Lead Plug  
 ○ Denoting "Old"  
 WT Denoting "Witness"

I, A. Daniluck of the City of Prince George,  
 British Columbia Land Surveyor, make oath and  
 say that I was present at and did personally  
 superintend the survey represented by this  
 plan and that the survey and plan are correct.  
 The said survey was completed on  
 the 15th day of July 1966.

*[Signature]*

Sworn before me at Prince George  
 this 14th day of August 1966.

Approved under the Land Registry Act  
 on the 31st day of October 1966.

*[Signature]*  
 Approving Officer  
 Dept. of Highways

*[Signature]*  
 A Commissioner for taking of oaths  
 within British Columbia

Owner

Witness

McWilliam - Whyte - Serle - Godie  
 B.C. Land Surveyors  
 Kamloops - Prince George  
 Ref. No 66044