

PLAN OF SUBDIVISION OF
PART OF THE S.W.1/4, DISTRICT LOT 2433
CARIBOO DISTRICT

PLAN No 16708
Deposited in the Land Registry Office
at ~~Vancouver~~ on the 19 day of Dec. 1966
PRINCE
GEORGE

[Signature]
Registrar

Scale 1" = 100'

Exception to Title

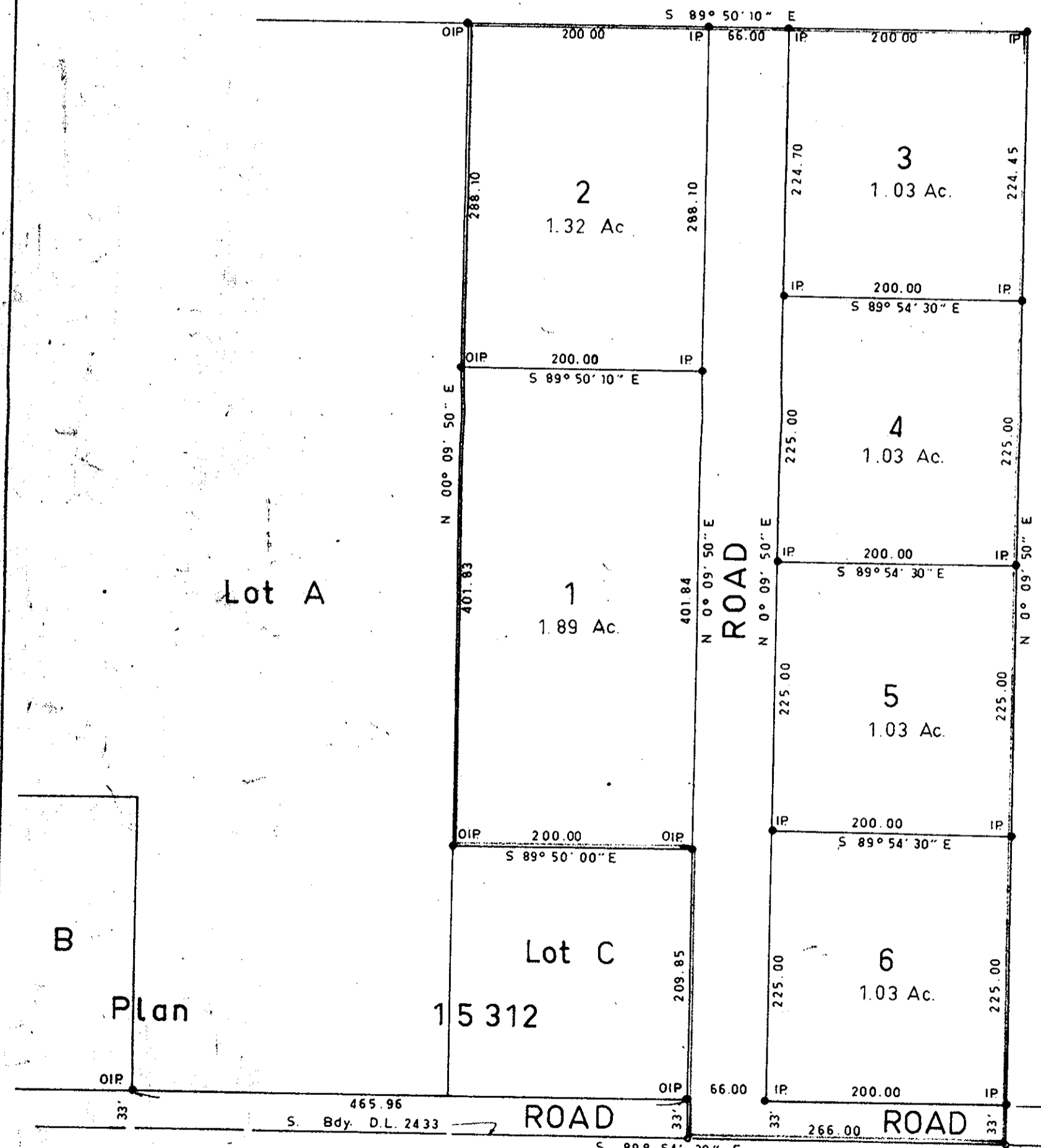
- PLAN 9394
- PLAN 9517
- PLAN B-7111
- PLAN H-226
- PLAN 14477
- PLAN 15312
- PLAN 11600
- PLAN 11011

S.W. 1/4

S.E. 1/4

D.L.

2433



Legend

Bearings are astronomic and are derived from OIP's found on the East boundary of Lot A Plan 15312 as N 00° 09' 50" E

● P.con.	Standard Concrete Post.
● P.Rock	Standard Rock Post.
● P.P.	Standard Pipe Post
● I.P.	Standard Iron Post
○ P.	Wooden Post.
■ L.P.	Lead Plug
O	Denoting "Old"
WT.	Denoting "Witness"

I, R. J. Goble, of the City of Prince George, British Columbia Land Surveyor, make oath and say that I was present at and did personally superintend the survey represented by this plan and that the survey and plan are correct.
The said survey was completed on the 2nd day of February, 1966.

[Signature]

Sworn before me at Prince George this 25 day of FEBRUARY 1966.

Approved under the Land Registry Act on the 24 day of November, 1966.

[Signature]
Approving Officer
Department of Highways.

[Signature]
A Commissioner for taking affidavits within British Columbia
Owner *[Signature]* Therese M. Dennis

Witness *[Signature]*
ROBERT B. CAMER R.I. (B.C.)
NOTARY PUBLIC
1500 7th AVENUE, PRINCE GEORGE, B.C.

Lot 1 Plan 11059

D.L. 4047

McWilliam - Whyte - Goble
B.C. Land Surveyors
Kamloops - Prince George
checked by [] [] [] [] No. 65247