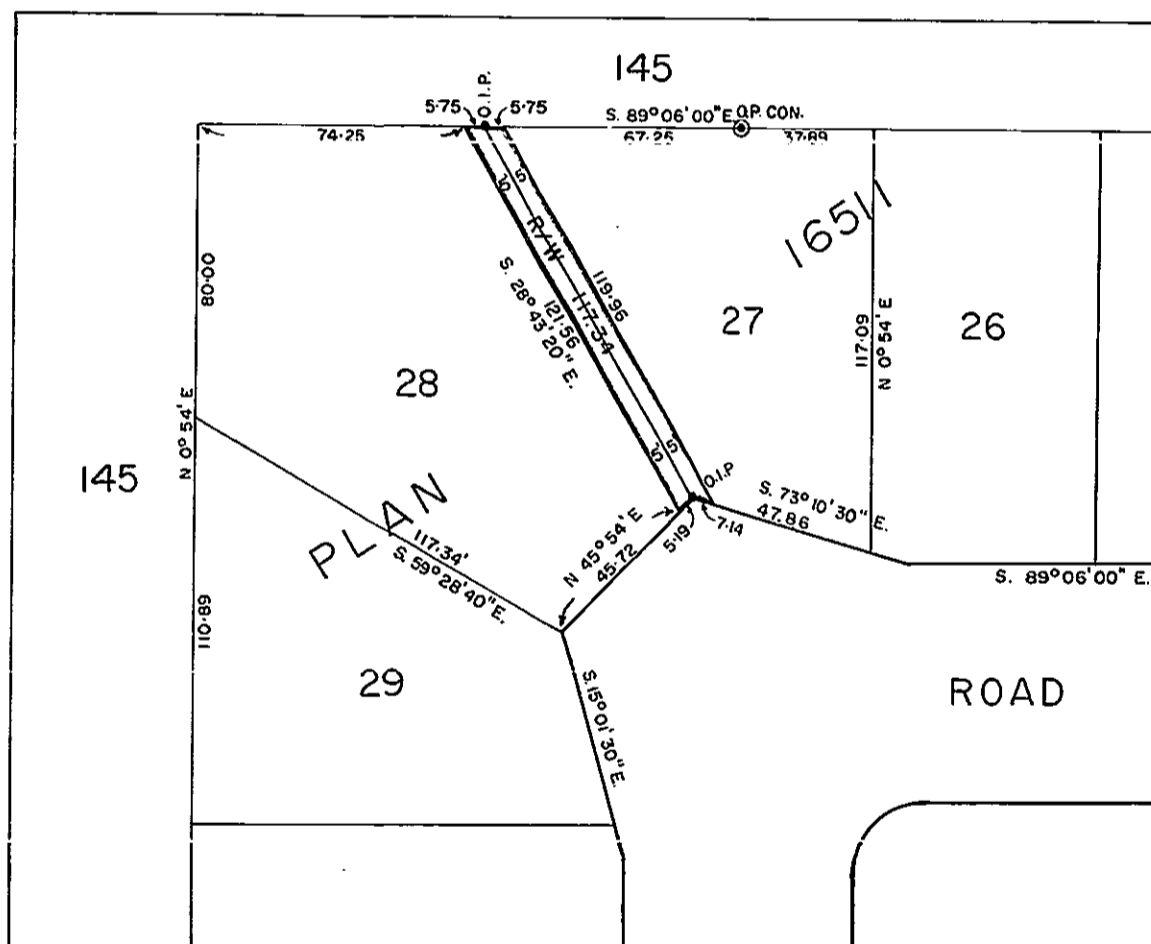


Plan of Right-of-Way
Through
Lots 27 & 28, Plan 16511
District Lot 913
Cariboo District
Scale: 1" = 40'

PLAN No 16671
Deposited in the Land Registry Office at
Prince George on the 7th day of Dec. 1966

[Signature]
Registrar.



BOOK OF REFERENCE	
R/W within :	Area
Lot 27 Plan 16511	593 sq. ft.
Lot 28 Plan 16511	597 sq. ft.

LEGEND

Bearings are astronomic and are derived from the N. Easterly boundary of Lot 28 as shown on Plan 16511.

- ⊙ P.con. Standard Concrete Post.
- ⊙ P.Rock Standard Rock Post.
- P.P. Standard Pipe Post.
- I.P. Standard Iron Post.
- P. Wooden Post.
- L.P. Lead Plug.
- Denoting "Ora"
- WT. Denoting "Witness"

I, R.J. Goble... of the city of Prince George, British Columbia Land Surveyor, make oath and say that I was present at and did personally supervise the survey represented by this plan and that the survey and plan are correct.

The said survey was completed on the 2nd day of September, 1966.

Sworn before me at Prince George this 19th day of SEPT. 1966.

[Signature]
A Commissioner for taking affidavits within British Columbia.

Approved under the Land Registry Act on the 27th day of SEPT. 1966.

[Signature]
C. P. Oat P.E.S.
Approving Officer