

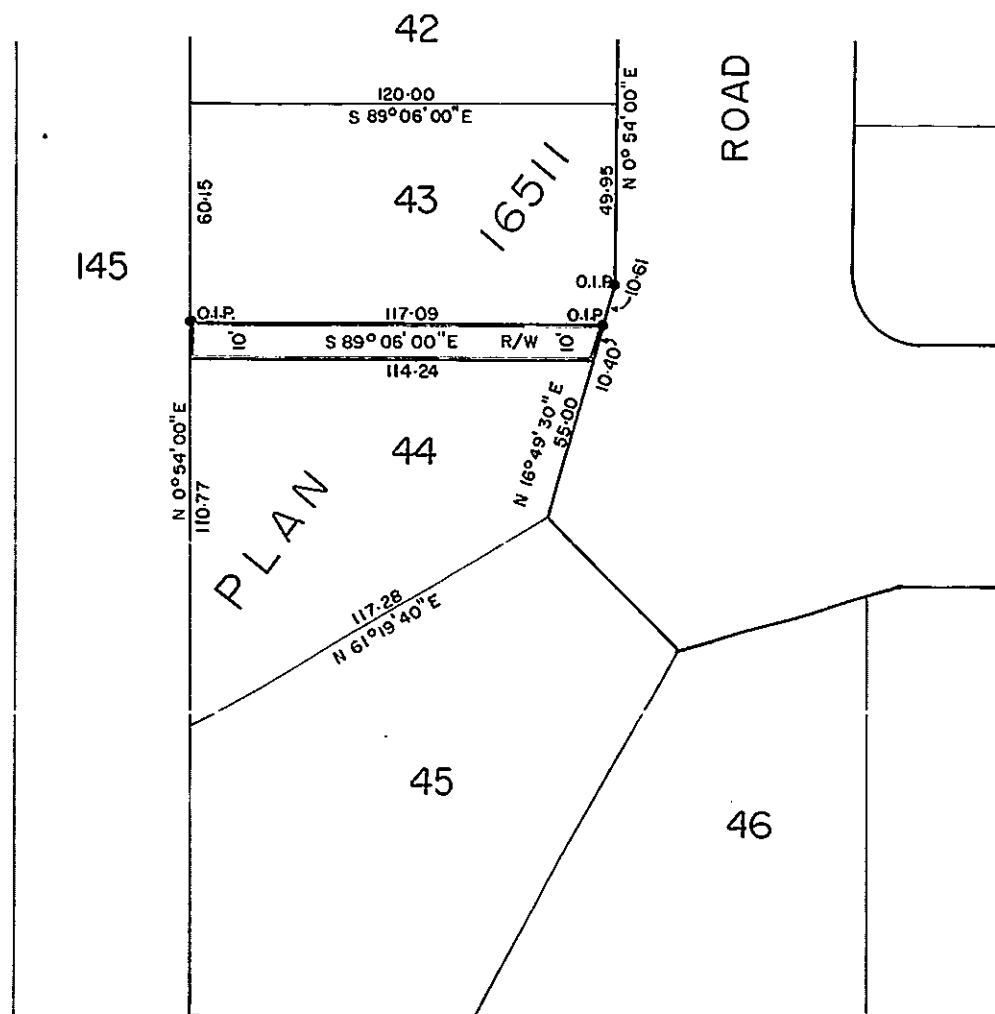
**PLAN No 16670**  
 Deposited in the Land Registry Office  
 at Prince George on the 7<sup>th</sup> day of Dec. 1966

*[Signature]*  
 Registrar.

Plan of Right-of-Way  
 Through  
 Lot 44, Plan 16511  
 District Lot 913  
 Cariboo District

Scale: 1" = 40'

BOOK OF REFERENCE	
R/W Within	Area
Lot 44, Plan 16511	1157 sq.ft.



Bearings are astronomic and are derived from  
 The North Boundary of Lot 44 shown as S 89°06'E  
 on Plan 16511.

- ⊙ P.con. ----- Standard Concrete Post.
- ⊙ P.Rock ----- Standard Rock Post.
- P.P. ----- Standard Pipe Post.
- I.P. ----- Standard Iron Post.
- P. ----- Wooden Post.
- L.P. ----- Lead Plug.
- O ----- Denoting "Old"
- WT. ----- Denoting "Witness"

I, R.J. GOBLE of the CITY of PRINCE GEORGE B.C.  
 British Columbia Land Surveyor, make oath and  
 say that I was present at and did personally  
 superintend the survey represented by this  
 plan and that the survey and plan are correct.  
 The said survey was completed on  
 the 2<sup>nd</sup> day of SEPT. 1966.

Sworn before me at Prince George  
 this 12<sup>th</sup> day of Sept. 1966.

*[Signature]*  
 A Commissioner for taking of affidavits  
 within British Columbia.

Approved under the Land Registry Act  
 on the 22<sup>nd</sup> day of SEPT. 1966.

*[Signature]* P. Eng.  
 Approving Officer