

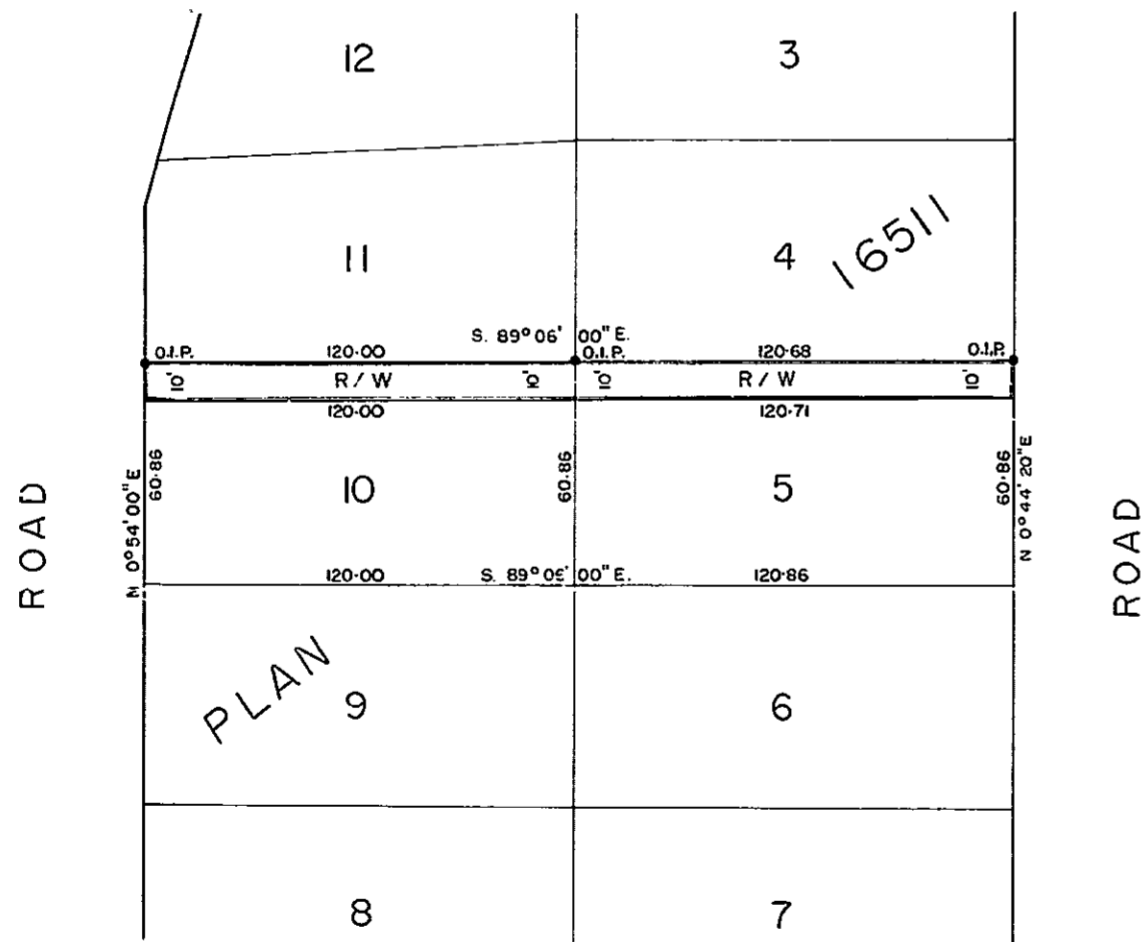
**PLAN No 16669**  
 Deposited in the Land Registry Office at Prince  
 George, B.C. on the 7<sup>th</sup> day of Dec. 1966

*[Signature]*  
 Registrar

Plan of Right-of-Way  
 Through  
 Lots 5 and 10, Plan 16511  
 District Lot 913

Cariboo District

Scale: 1" = 40'



BOOK OF REFERENCE	
R/W within:	Area :
Lot 5 Plan 16511	1200 sq. ft.
Lot 10 Plan 16511	1207 sq. ft.

LEGEND

Bearings are astronomic and are derived from  
 The North Boundary of Lots 5 and 10 shown as  
 S. 89° 06' 00" E. on Plan 16511.

- ⊙ R.con. .... Standard Concrete Post.
- ⊙ R.Rock .... Standard Rock Post.
- RP .... Standard Pipe Post.
- LP .... Standard Iron Post.
- P. .... Wooden Post.
- L.P. .... Lead Plug.
- .... Denoting "Old"
- WT. .... Denoting "Witness"

I, R.J. GOBLE of the CITY OF PRINCE GEORGE B.C.  
 British Columbia Land Surveyor, make oath and  
 say that I was present at and did personally  
 superintend the survey represented by this  
 plan and that the survey and plan are correct.  
 The said survey was completed on  
 the 2<sup>nd</sup> day of SEPT. 1966.

Sworn before me at Prince George  
 this 12<sup>th</sup> day of Sept. 1966

*[Signature]*  
 A commissioner for taking of affidavits  
 within British Columbia.

Approved under the Land Registry Act  
 on the 27<sup>th</sup> day of SEPT. 1966.

*[Signature]*  
 Approving Officer