

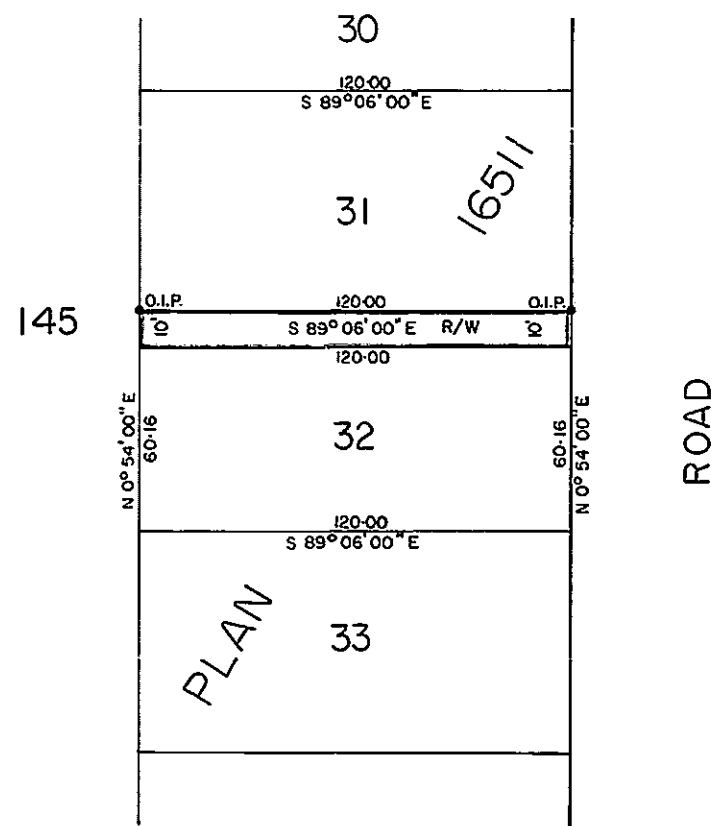
**PLAN N<sup>o</sup> 16668**  
 Deposited in the Land Registry Office  
 at Prince George on the 7<sup>th</sup> day of Dec. 1966

*[Signature]*  
 Registrar.

Plan of Right-of-Way  
 Through  
 Lot 32, Plan 16511  
 District Lot 913  
 Cariboo District

Scale: 1" = 40'

BOOK OF REFERENCE	
R/W Within	Area
Lot 32, Plan 16511	1200sq.ft.



Bearings are astronomic and are derived from  
 The North Boundary of Lot 32 shown as S 89° 06' E  
 on Plan 16511.

- ⊙ P.con. .... Standard Concrete Post.
- ⊙ P.Rock .... Standard Rock Post.
- P.P. .... Standard Pipe Post.
- L.P. .... Standard Iron Post.
- P. .... Wooden Post.
- L.P. .... Lead Plug.
- ..... Denoting "Old"
- WT. .... Denoting "Witness"

Approved under the Land Registry Act  
 on the 27<sup>th</sup> day of SEPT. 1966.

*C. J. Oat P. Eng.*  
 Approving Officer

I, R. J. GOBLE... of the CITY of PRINCE GEORGE B.C.  
 British Columbia Land Surveyor, make oath and  
 say that I was present at and did personally  
 superintend the survey represented by this  
 plan and that the survey and plan are correct.  
 The said survey was completed on  
 the 2<sup>nd</sup> day of SEPT. 1966.

Sworn before me at Prince George  
 this 12<sup>th</sup> day of Sept. 1966.

*[Signature]*  
 A Commissioner for taking affidavits  
 within British Columbia.

McWilliam Whyte — Goble and Assoc.  
 B.C. Land Surveyors  
 Kamloops — Prince George.  
 Checked  T  S  D  X  
 Ref. No. 65100-35-RW.4