

**PLAN No 16667**  
 Deposited in the Land Registry Office  
 at Prince George on the 7<sup>th</sup> day of Dec. 1966

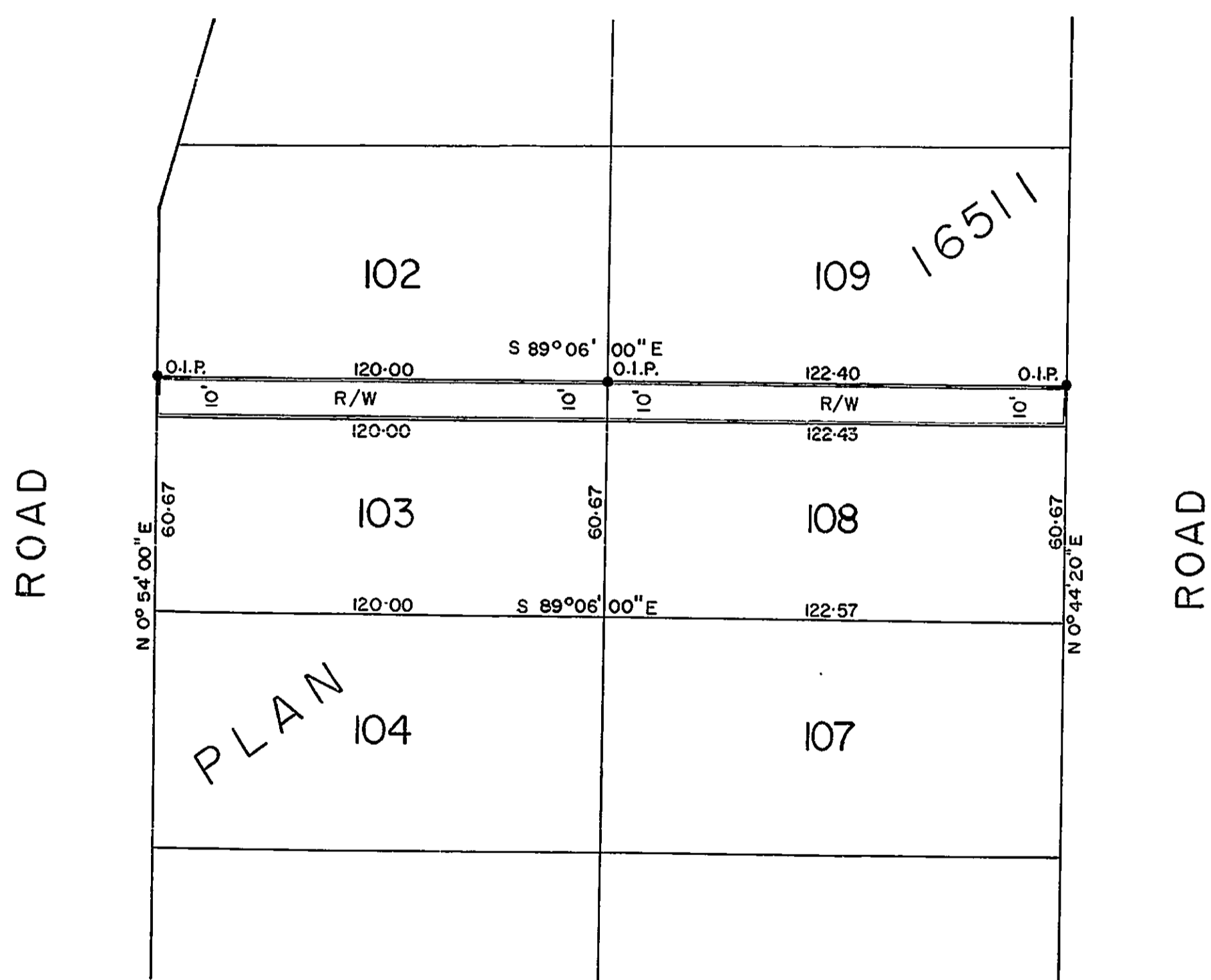
*[Signature]*  
 Registrar

Plan of Right-of-Way  
 Through  
 Lots 103 and 108, Plan 16511  
 District Lot 913

Cariboo District

Scale: 1" = 40'

BOOK OF REFERENCE	
R/W Within	Area
Lot 103, Plan 16511	1200 sq. ft.
Lot 108, Plan 16511	1224 sq. ft.



Bearings are astronomic and are derived from  
 The North Boundary of Lots 103 and 108 shown as  
 S 89° 06' 00" E on Plan 16511.

- ⊙ P.con. ----- Standard Concrete Post.
- ⊙ P.Rock ----- Standard Rock Post.
- P.P. ----- Standard Pipe Post.
- I.P. ----- Standard Iron Post.
- P. ----- Wooden Post.
- L.P. ----- Lead Plug.
- ----- Denoting "Old"
- WT. ----- Denoting "Witness."

I, R. J. GOBLE of the CITY of PRINCE GEORGE, B.C.  
 British Columbia Land Surveyor, make oath and  
 say that I was present at and did personally  
 superintend the survey represented by this  
 plan and that the survey and plan are correct.  
 The said survey was completed on  
 the 2<sup>nd</sup> day of SEPT. 1966.

Sworn before me at Prince George  
 this 12<sup>th</sup> day of Sept. 1966.

Approved under the Land Registry Act  
 on the 27<sup>th</sup> day of SEPT. 1966

*[Signature]*  
 C. E. Olat P. Eng  
 Approving Officer

*[Signature]*  
 A commissioner for taking affidavits  
 within British Columbia.