

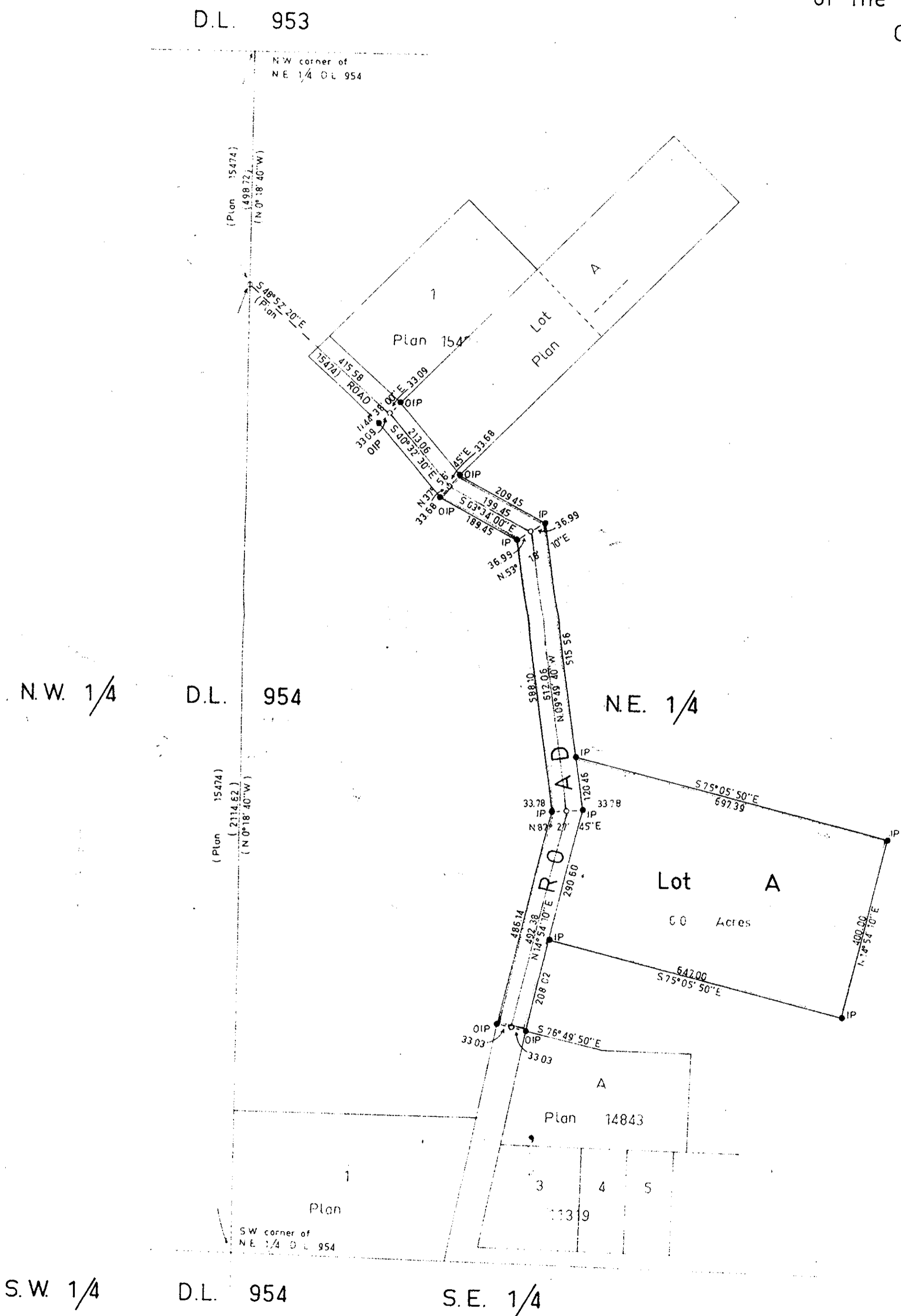
Plan of Subdivision of Part  
of The N.E. 1/4 of District Lot 954  
Cariboo District

PLAN No 16658  
Deposited in the Land Registry Office  
at Prince George on the 30<sup>th</sup> day of Nov 1966  
George

*J. H. G. ...*  
Registrar

Scale 1" = 200'

Exceptions to Title  
Plan 15474  
Plan 14843  
Plan 11319



Bearings are astronomic and are derived from  
OIPs found on Road Boundaries shown on  
Plan 15474 as S 40° 32' 30" E

- PCor Standard Concrete Post.
- PRock Standard Rock Post
- PIP Standard Pipe Post
- IIP Standard Iron Post
- P Wooden Post
- LP Lead Plug
- O Denoting "Old"
- WT Denoting "Witness"

I, R. J. Goble, of the City of Prince George, British Columbia, Land Surveyor, make oath and say that I was present at and did personally supervise the survey represented by this plan and that the survey and plan are correct. The said survey was completed on the 13<sup>th</sup> day of May 1966.

Sworn before me at PRINCE GEORGE this 17<sup>th</sup> day of May 1966.

Approved under the Land Registry Act on the 7<sup>th</sup> day of October 1966.

*[Signature]*  
Approving Officer  
Dept. of Highways

*[Signature]*  
Owner

Witness *[Signature]*