

4344 900

RECEIVED  
NOV 7 1966  
PROVINCIAL ASSESSOR  
PRINCE GEORGE, B. C.

PLAN No 16612  
Deposited in the Land Registry  
Office at Prince George, B.C. this  
day of Nov, 1966

Registrar T.W. Carlow

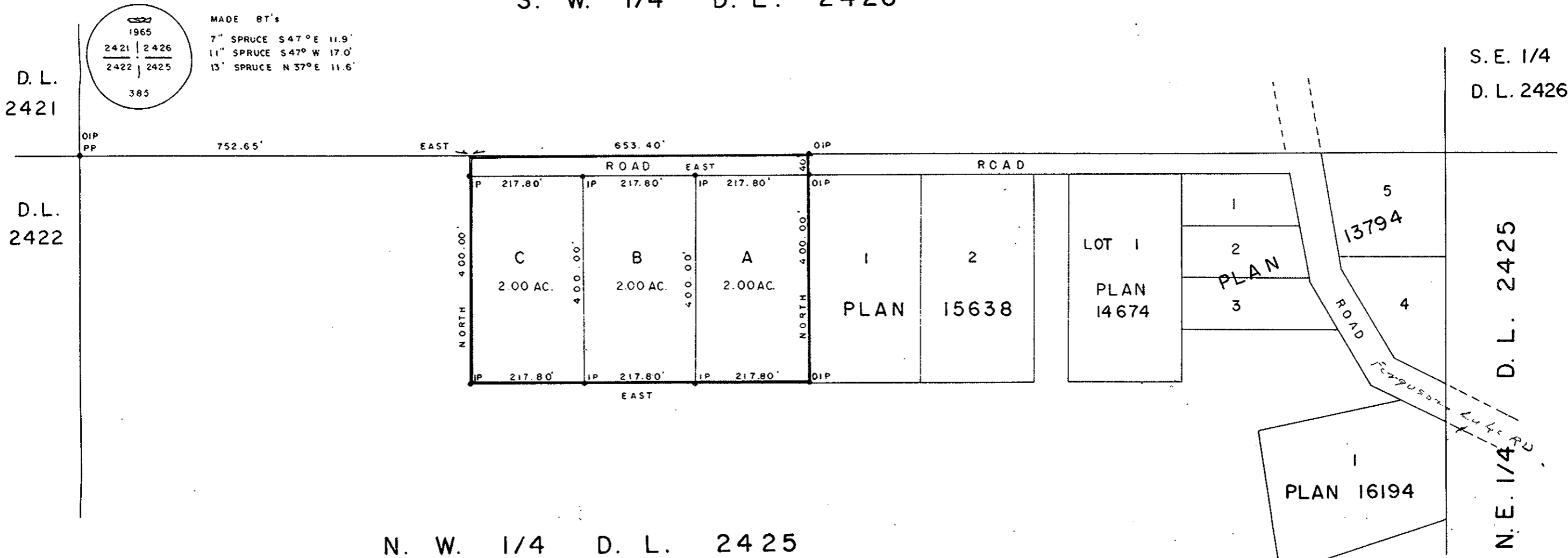
PLAN OF SUBDIVISION OF PART OF  
N. W. 1/4 OF  
DISTRICT LOT 2425  
EXCEPT PLANS 13794, 14674, 15638 & 16194  
CARIBOO DISTRICT - BRITISH COLUMBIA

SCALE: 1" = 200'

NOTE: Bearings are astronomic, derived from the  
North Boundary of N.W. 1/4 D.L. 2425 as  
shown on Plan 13794.

LEGEND: ● OIP denotes an old iron pin found.  
● IP denotes an iron pin placed on this survey.  
● PP denotes a pipe post placed on this survey.

S. W. 1/4 D. L. 2426



I, DONALD A. DUFFY, of the City of Prince George,  
a British Columbia Land Surveyor make oath and say  
that I was present at and did personally superintend  
the survey represented by this plan and that the survey  
and plan are correct. The said survey was completed  
on the 27th day of OCTOBER, 1965.

*Donald A. Duffy*  
B. C. L. S.

Sworn before me this 27th  
day of OCTOBER, 1966.

*Commissioner*  
A Commissioner for taking Affidavits  
within the Province of British Columbia.

*E. Anderson*  
Owner

*D. Duffy*  
Witness

*Anne Anderson*  
Owner

*D. Duffy*  
Witness

Approved under the Land Registry Act  
this 6th day of October, 1966

*W. D. Usher*  
Approving Officer, Dept. of Highway