

N 105,570.02  
E 111,349.94  
City of Prince George Co-ordinates

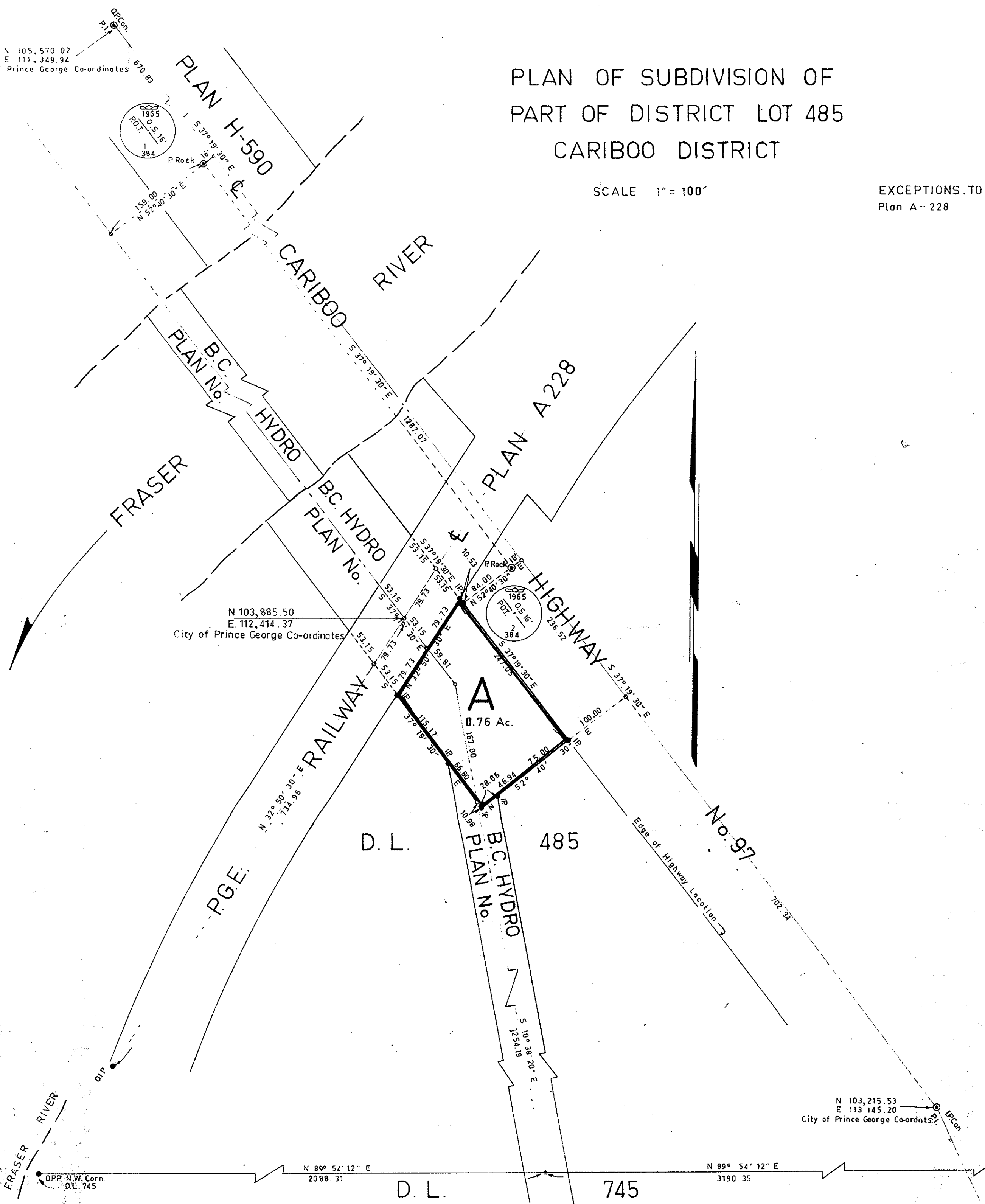
# PLAN OF SUBDIVISION OF PART OF DISTRICT LOT 485 CARIBOO DISTRICT

SCALE 1" = 100'

EXCEPTIONS TO TITLE  
Plan A-228

**PLAN No 16597**  
Deposited in the Land Registry Office  
at Prince George on the 25<sup>th</sup> day of Oct. 1966

Registrar



PACIFIC GREAT EASTERN RAILWAY COMPANY

*E.M. Guderson*  
Executive Vice President

*[Signature]*  
Secretary

Approved by

*H.H. Minshull*  
Chief Engineer

**LEGEND**

Bearings are astronomic and are derived from the east boundary of Central Street shown on plan H700 as N. 0°18'25" E.

- ⊙ IPCon ..... Iron post set in concrete.
- ⊙ P.con ..... Standard Concrete Post.
- ⊙ P.Rock ..... Standard Rock Post.
- PP ..... Standard Pipe Post.
- I.P. .... Standard Iron Post.
- P ..... Wooden Post.
- L.P. .... Lead Plug.
- ..... Denoting "Old"
- WT ..... Denoting "Witness."

I, R.J. Goble... of the City of Prince George British Columbia Land Surveyor, make oath and say that I was present at and did personally superintend the survey represented by this plan and that the survey and plan are correct. The said survey was completed on the 29<sup>th</sup> day of Nov. 1965.

Sworn before me at Prince George this 30<sup>th</sup> day of December 1965

Approved under the Land Registry Act on the 15<sup>th</sup> day of February 1966.

*[Signature]*  
Approving Officer  
Department of Highways.

Owner

Re-approved under the Land Registry Act on the 18<sup>th</sup> day of May 1966.

*[Signature]*  
Approving Officer  
Department of Highways

Witness

**REAPPROVED:**

*[Signature]*  
APPROVING OFFICER, DEPT. OF HWYS.  
SEPTEMBER 29<sup>th</sup>, 1966.

D.L. 487

McWilliam-Whyte-Serle-Goble  
B.C. Land Surveyors  
Kamloops-Prince George  
checked [ ] [ ] [ ] [ ] [ ] [ ] [ ] [ ]  
Ref. No. 65242

805-57-090