

PLOTTED (GH)

PLAN OF SUBDIVISION OF
PART OF DISTRICT LOT 9263
CARIBOO DISTRICT

PLAN No 16592

Deposited in the Land Registry Office
at Prince George on the 21 day of Oct. 1966

[Signature]
Registrar

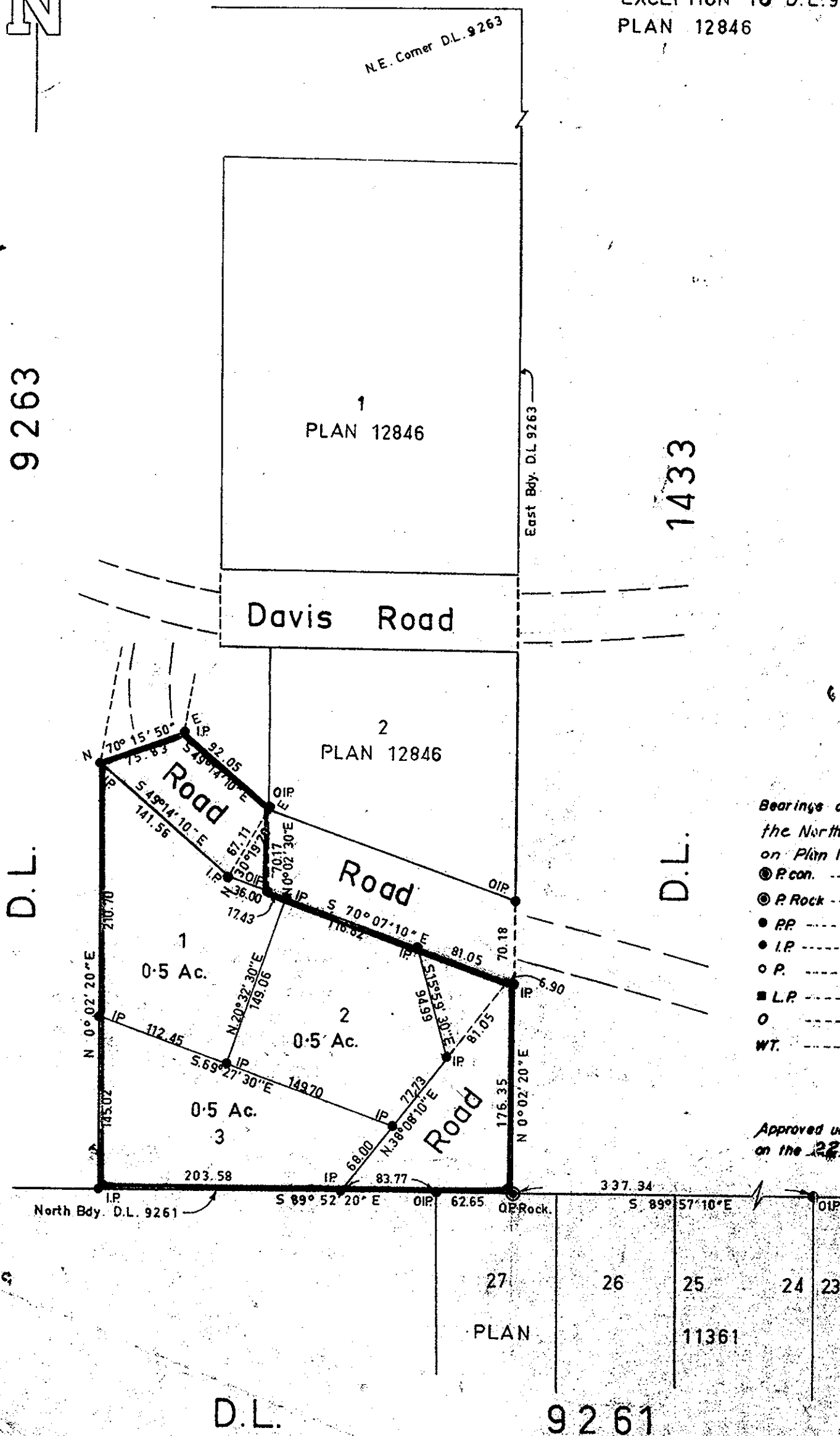
SCALE 1" = 100'

EXCEPTION TO D.L. 9263
PLAN 12846

N

9263

1433



Inspected on the 9th day
of August 1966.

[Signature]
R. J. Goble, B.C.L.S.

Bearings are astronomic and are derived from
the North boundary of D.L. 9261 shown
on Plan 12846 as S 89° 57' 10" E

- P.con. ----- Standard Concrete Post.
- P.Rock ----- Standard Rock Post.
- PP ----- Standard Pipe Post.
- I.P. ----- Standard Iron Post.
- P. ----- Wooden Post.
- L.P. ----- Lead Plug.
- ----- Denoting "Old"
- WT. ----- Denoting "Witness"

I, R. J. Goble... of the city of Prince George
British Columbia Land Surveyor, make oath and
say that I was present at and did personally
superintend the survey represented by this
plan and that the survey and plan are correct.

The said survey was completed on
the 24th day of June 1965.

Sworn before me at Prince George B.C.
this 12th day of August 1965.

Approved under the Land Registry Act
on the 22nd day of September 1966.

[Signature]
Approving Officer
Department of Highways Prince George

[Signature]
A commissioner for taking affidavits
within British Columbia.

Owner

Witness

McWilliam — Whyte — Serle — Goble

B.C. Land Surveyors

Kamloops — Prince George

checked f s d x Ref. No 63145