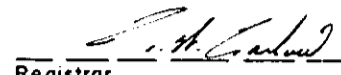


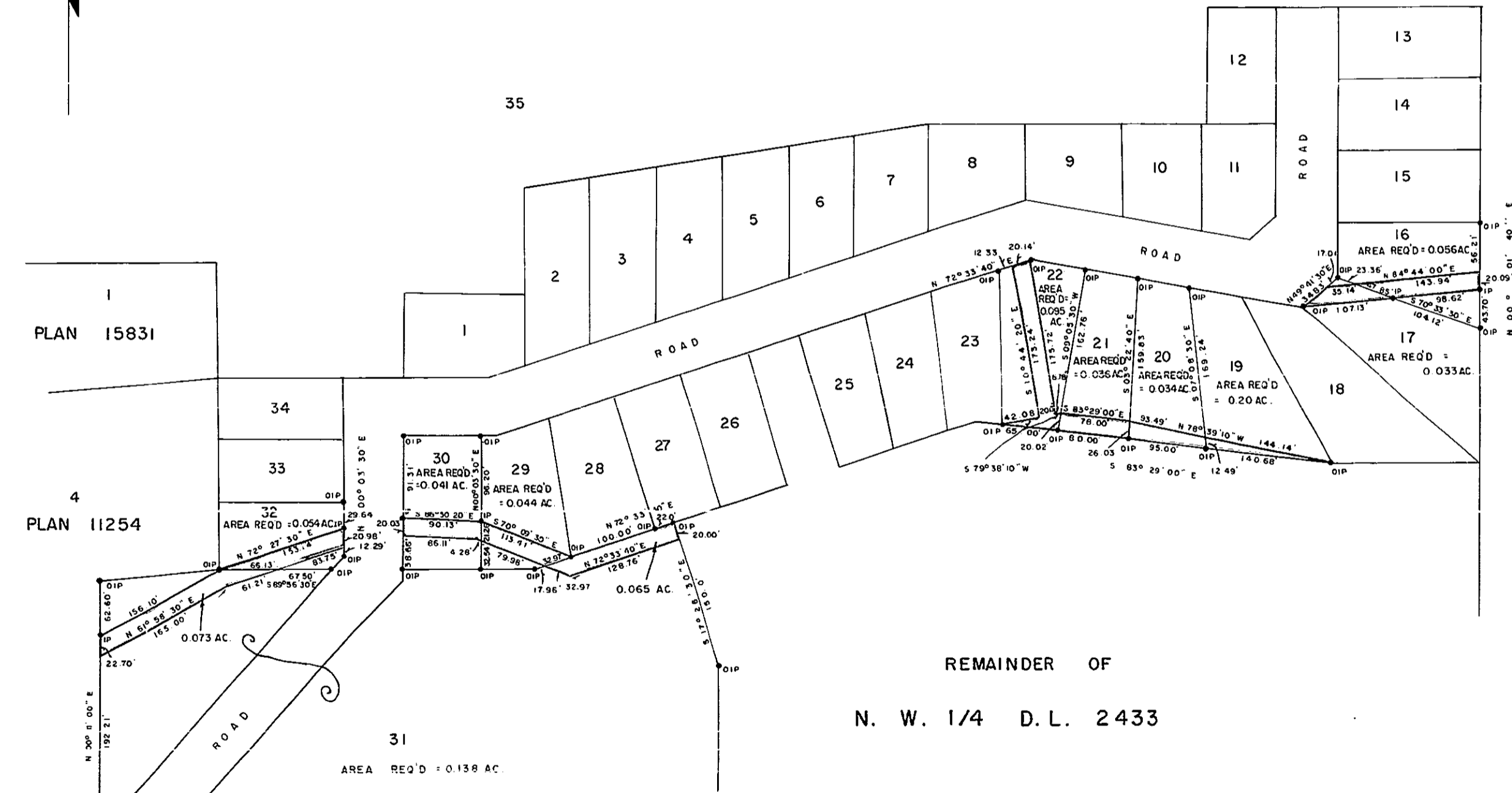
PLAN OF RIGHT - OF - WAY THROUGH
 LOTS 16,17,19,20,21,22,29,30,31 & 32 - PLAN
 DISTRICT LOT 2433
 CARIBOO DISTRICT - BRITISH COLUMBIA

SCALE: 1" = 100'

NOTE: Bearings are astronomic, derived from the
 South Boundary of Lots 19 to 22, 29, 30 &
 32 - Plan 76589

LEGEND: ● OIP denotes an old iron pin found.
 ● IP denotes an iron pin placed on this survey.

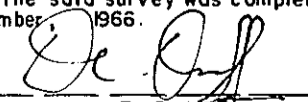
PLAN No 16590
 Deposited in the Land Registry
 Office, at Prince George, B.C. this
 25th day of Oct, 1966

 Registrar




N. E. 1/4 D. L. 2433

REMAINDER OF
 N. W. 1/4 D. L. 2433

I, DONALD A. DUFFY of the City of Prince George,
 a British Columbia Land Surveyor, make oath and say
 that I was present at and did personally superintend
 the survey represented by this plan and that the survey
 and plan are correct. The said survey was completed
 on the 20th day of September, 1966.


 B. C. L. S.

Sworn before me this 30th
 day of SEPTEMBER, 1966.


 A Commissioner for taking Affidavits
 within the Province of British Columbia.

W. D. USHER & ASSOCIATES
 LAND SURVEYORS
 PRINCE GEORGE - B. C.
 AR 1735