

16583

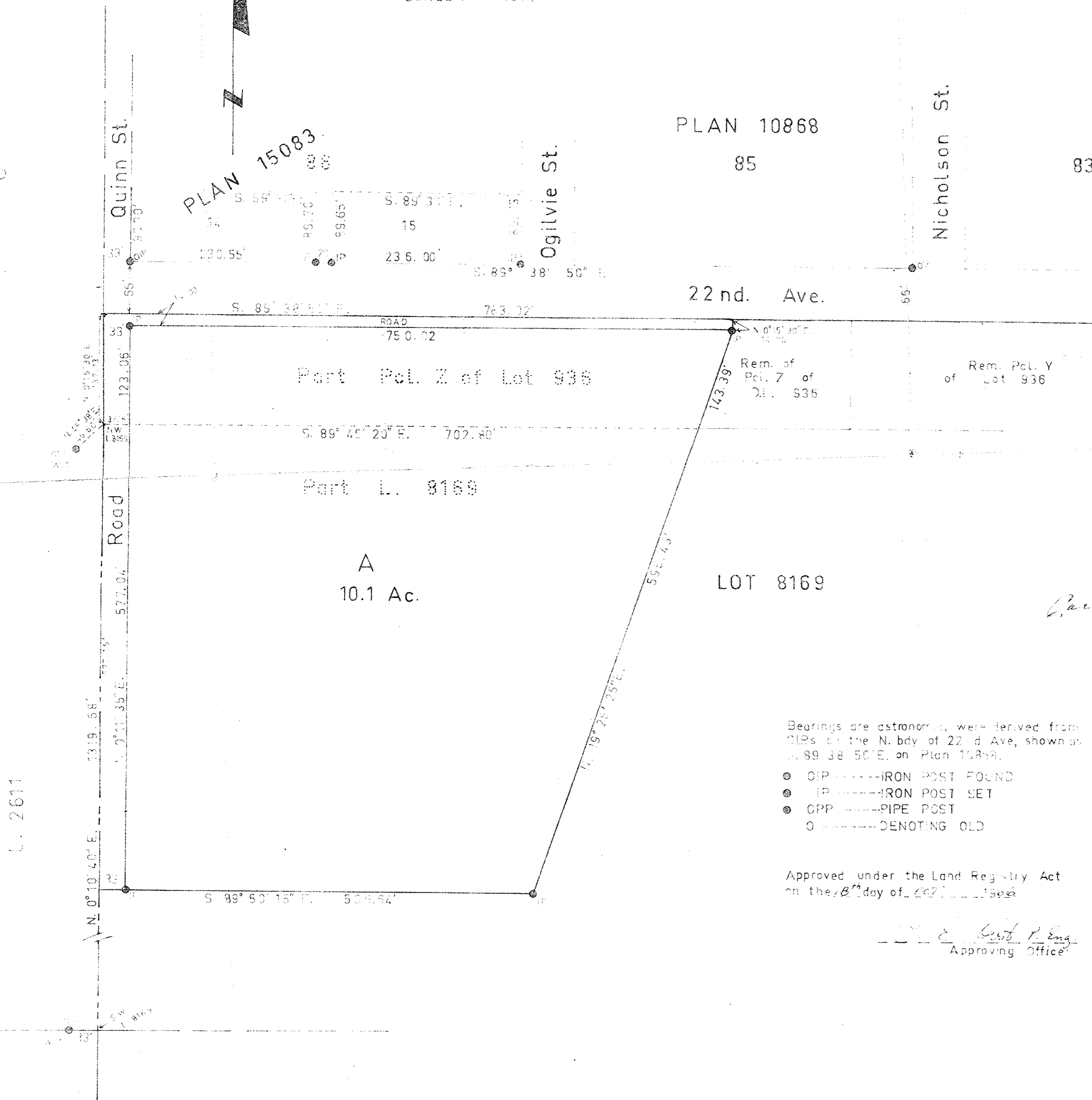
Plan No ~~10578~~

Deposited in the Land Registry Office at Prince George on the 19 day of Oct 1966

REGISTRAR

PLAN OF SUBDIVISION OF PART
PARCEL Z, PLAN 696 OF LOT 936
AND PART OF LOT 8169.
CARIBOO DISTRICT.

SCALE : 1" = 100'



THE SEAL OF THE CORPORATION OF THE CITY OF PRINCE GEORGE was affixed hereto in the presence of

Carrie Anne Gray Kelly
MAYOR

CLERK

Bearings are astronomical, were derived from G.I.R.s on the N. bdy of 22nd Ave, shown as S. 89° 38' 50" E. on Plan 10868.

- OIP ----- IRON POST FOUND
- IP ----- IRON POST SET
- CPP ----- PIPE POST
- ----- DENOTING OLD

Approved under the Land Registry Act on the 8th day of Oct 1966

E. West P. Eng.
Approving Office

I, A DANILUCK of the City of Prince George British Columbia Land Surveyor, make oath and say that I was present at and did personally superintend the survey represented by this plan and that the survey and plan are correct. The survey was completed on the 15th day of September 1966.

A. Daniluck
A DANILUCK, B.C.L.S.

Sworn before me at Prince George this 6th day of October 1966

W. Buckley
A Commissioner for taking affidavits with British Columbia

McWilliam, Whyte, Goble, & Associates,
B.C. Land Surveyors,
1595 - 5th Avenue, Prince George, B.C.

CHECKED [] F [] S [] D [] X [] Ref No 65100-36