

PLAN OF SUBDIVISION OF PART OF
 LOT 1 - PLAN 11059, EXCEPT PLAN 15486
 DISTRICT LOT 4047
 CARIBOO DISTRICT - BRITISH COLUMBIA

SCALE: 1" = 100' R.C.

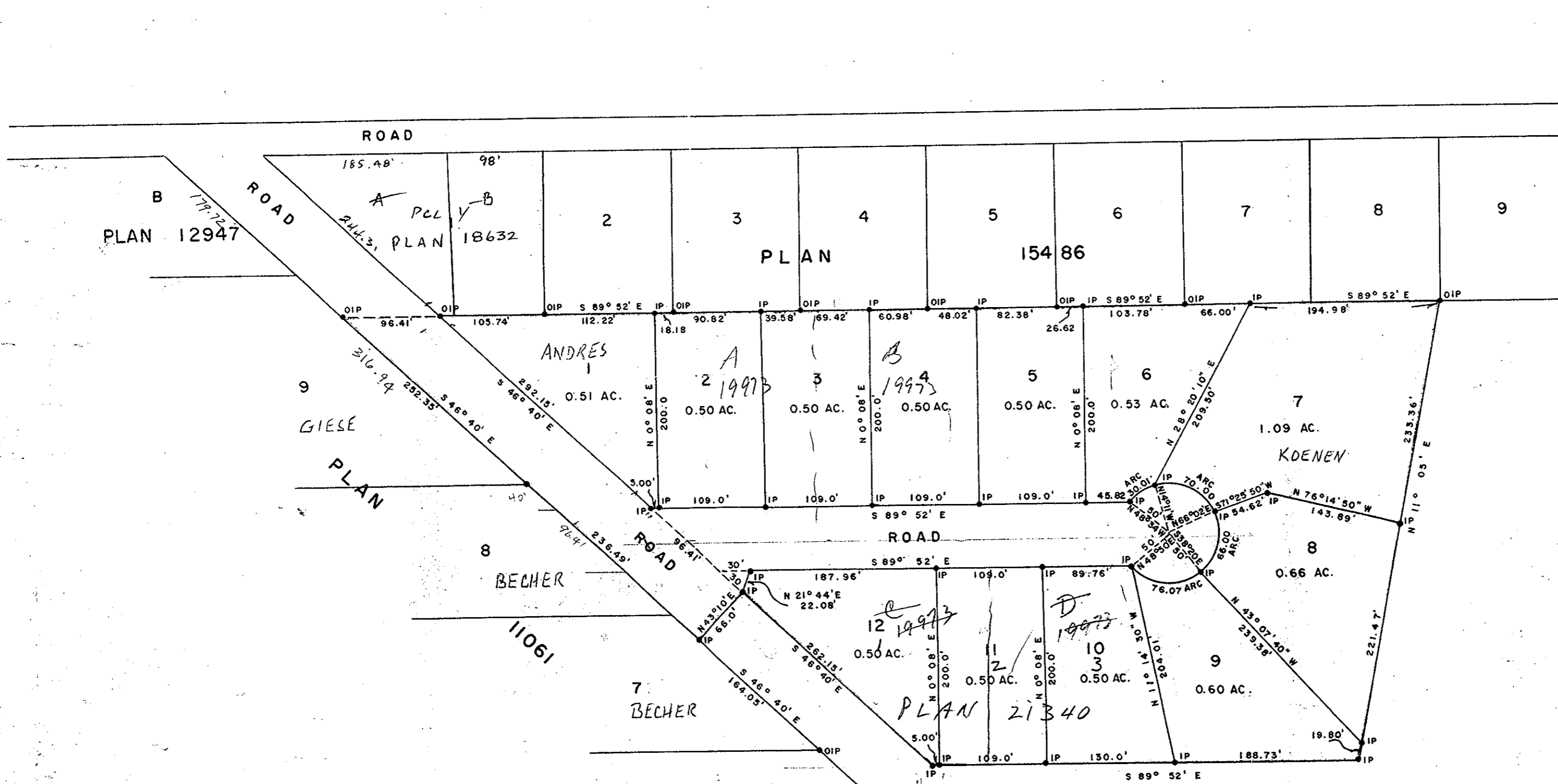
NOTE: Bearings are astronomic, derived from the South Boundary of Lots 1 to 9, Plan 15486.

LEGEND: ● OIP denotes an old iron pin found.
 ● IP denotes an iron pin placed on this survey.

PLAN No. 16575

Deposited in the Land Registry Office at Prince George, B. C. this 14 day of October, 1966

C. H. ...
 Registrar



N. E. 1/4 D. L. 4047

I, DONALD A. DUFFY, of the City of Prince George, a British Columbia Land Surveyor, make oath and say that I was present at and did personally superintend the survey represented by this plan and that the survey and plan are correct. The said survey was completed on the 4th day of May, 1966.

D. Duffy
 B. C. L. S.

Sworn before me this 9th day of MAY, 1966.

W. D. Usher & Associates
 A Commissioner for taking Affidavits within the Province of British Columbia.

D. L. 4047

789
 990
 1313
 176
 1499

Owner _____
 Witness _____

Eric ...
 Owner
...
 Witness

Approved under the Land Registry Act this 29th day of September, 1966.

...
 Approving Officer, Dept. of Highways.

W. D. USHER & ASSOCIATES
 LAND SURVEYORS
 PRINCE GEORGE - B. C.
 AU - 12, AR 60-61 1673

190
 450
 302
 906