

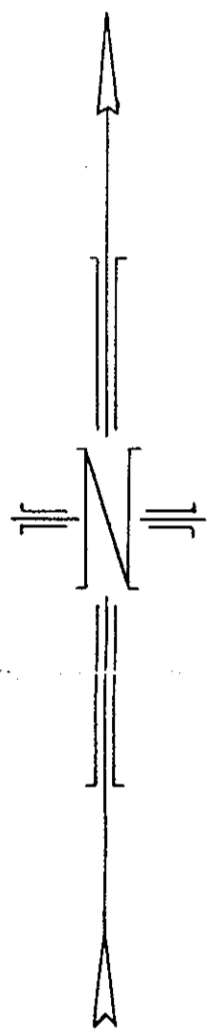
PLAN OF SUBDIVISION OF PORTIONS OF S. 1/2 DISTRICT LOT 749 AND S.W. 1/4 DISTRICT LOT 750 CARIBOO DISTRICT.

SCALE: 1 IN. = 200 FT.
LEGEND

Bearings are Astronomic derived from Plan A-2892 (N89°26'50"E)
1/2"x1/2"x30" galvanized iron post set is shown thus ● IP
Old iron survey post found is shown thus ● OIP

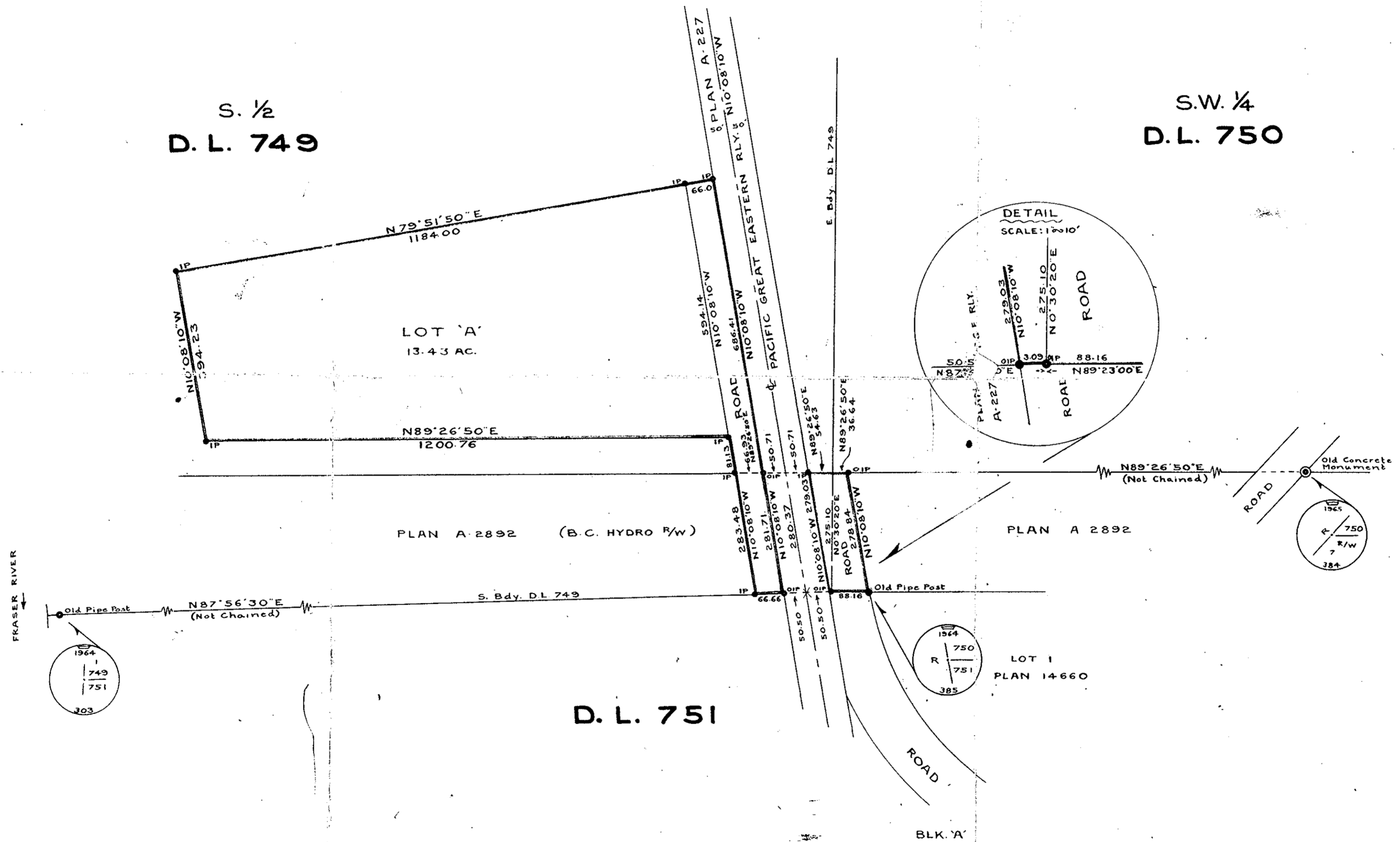
PLAN 16570
Deposited in the Land Registry Office, at
Prince George B.C., this 11th day of
OCTOBER 1966.
J. H. Carlson
Registrar

Approved under the Land Registry Act
this 12th day of OCT 1966.
James Salmon
Approving Officer - Dept. of Highways



S. 1/2
D. L. 749

S.W. 1/4
D. L. 750



PACIFIC GREAT EASTERN RAILWAY COMPANY

G. M. Lundstrom
VICE-PRESIDENT

A. Bryson
SECRETARY

J. H. Manshall
CHIEF ENGINEER

I, James B. Salmon of West Vancouver, British Columbia Land Surveyor, make oath and say that I was present at and did personally superintend the survey represented by this plan, and that the survey and plan are correct.
The said survey was completed on the 6th day of October, 1966.

Subscribed before me, this 11th day of OCT 1966 } *J. B. Salmon*
B.C.L.S.

J. L. [Signature]
A Commissioner for taking Affidavits within British Columbia

McELHANNAY ASSOCIATES
Surveyors and Consulting Engineers
1200 West Pender Street
Vancouver, I. B. C.
Job No. 2860

12.16
30.53
34.53