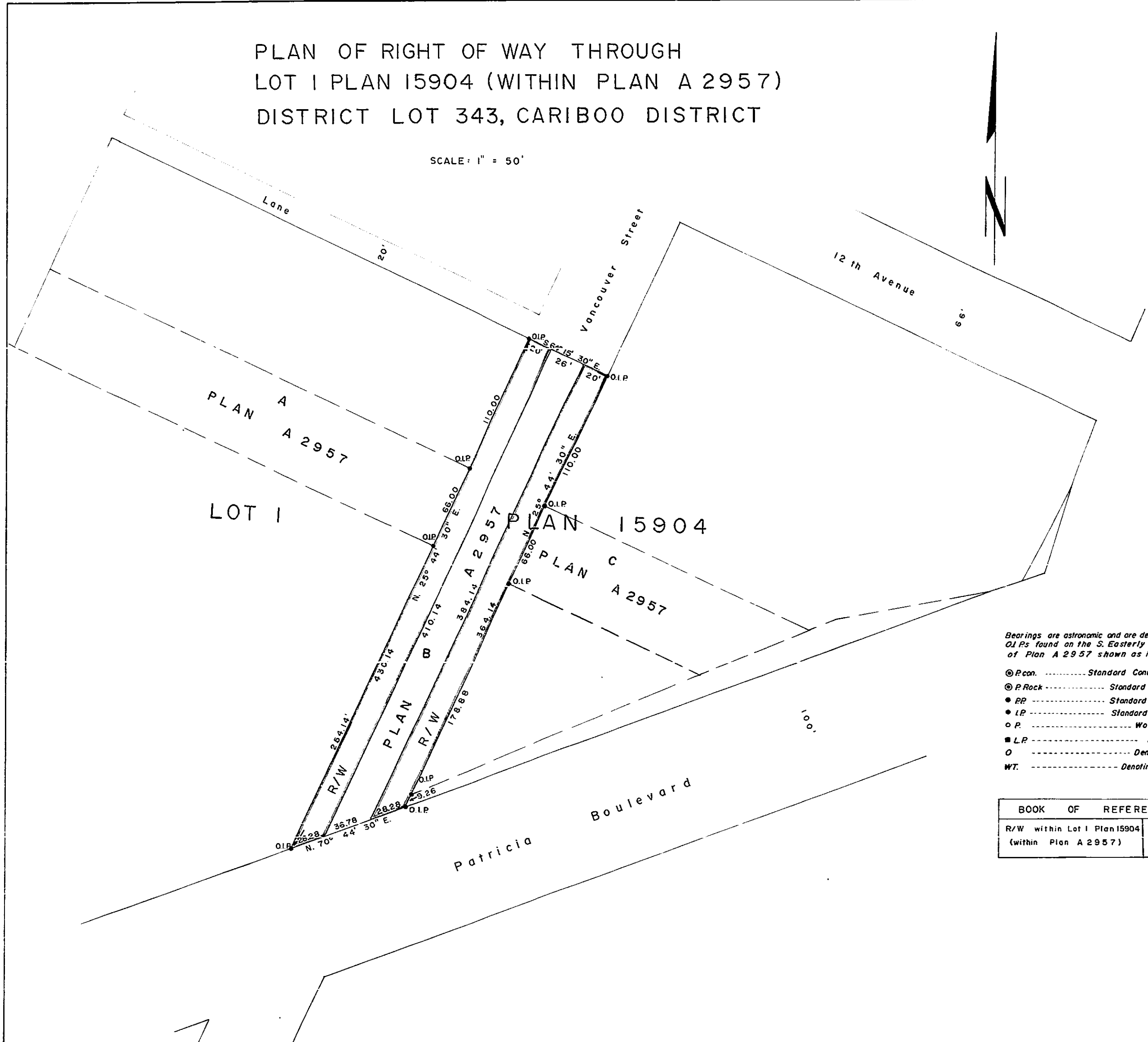


PLAN OF RIGHT OF WAY THROUGH
 LOT 1 PLAN 15904 (WITHIN PLAN A 2957)
 DISTRICT LOT 343, CARIBOO DISTRICT

PLAN No 16551
 Deposited in the Land Registry Office at Prince
 George, B. C. on the 28 day of Sept. 19 66

[Signature]
 Registrar

SCALE: 1" = 50'



Bearings are astronomic and are derived from
 O.I.P.s found on the S. Easterly boundary
 of Plan A 2957 shown as N. 25° 44' 30\"/>

- P.con. Standard Concrete Post.
- P.Rock Standard Rock Post.
- P.Pipe Standard Pipe Post.
- I.P. Standard Iron Post.
- P. Wooden Post.
- L.P. Lead Plug.
- Denoting "Old"
- WT. Denoting "Witness"

I, R.J. Goble... of the city of Prince George,
 British Columbia Land Surveyor, make oath and
 say that I was present at and did personally
 superintend the survey represented by this
 plan and that the survey and plan are correct.
 The said survey was completed on
 the 7th day of September 1966

Sworn before me at Prince George
 this 28th day of Sept. 19 66.

[Signature]
 A Commissioner for taking affidavits
 within British Columbia.

BOOK OF REFERENCE	
R/W within Lot 1 Plan 15904 (within Plan A 2957)	Area: 0.365 Ac.