

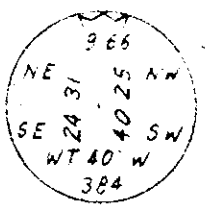
**Plan of Subdivision
of Part of the S.W. 159.18 Acres
of District Lot 4025, Cariboo District.**
Scale: 1" = 200'

N.W. 1/4
D.L. 4025

BK. A
Plan 9061

PLAN 16545
PRINCE GEORGE
27 SEPT 1966

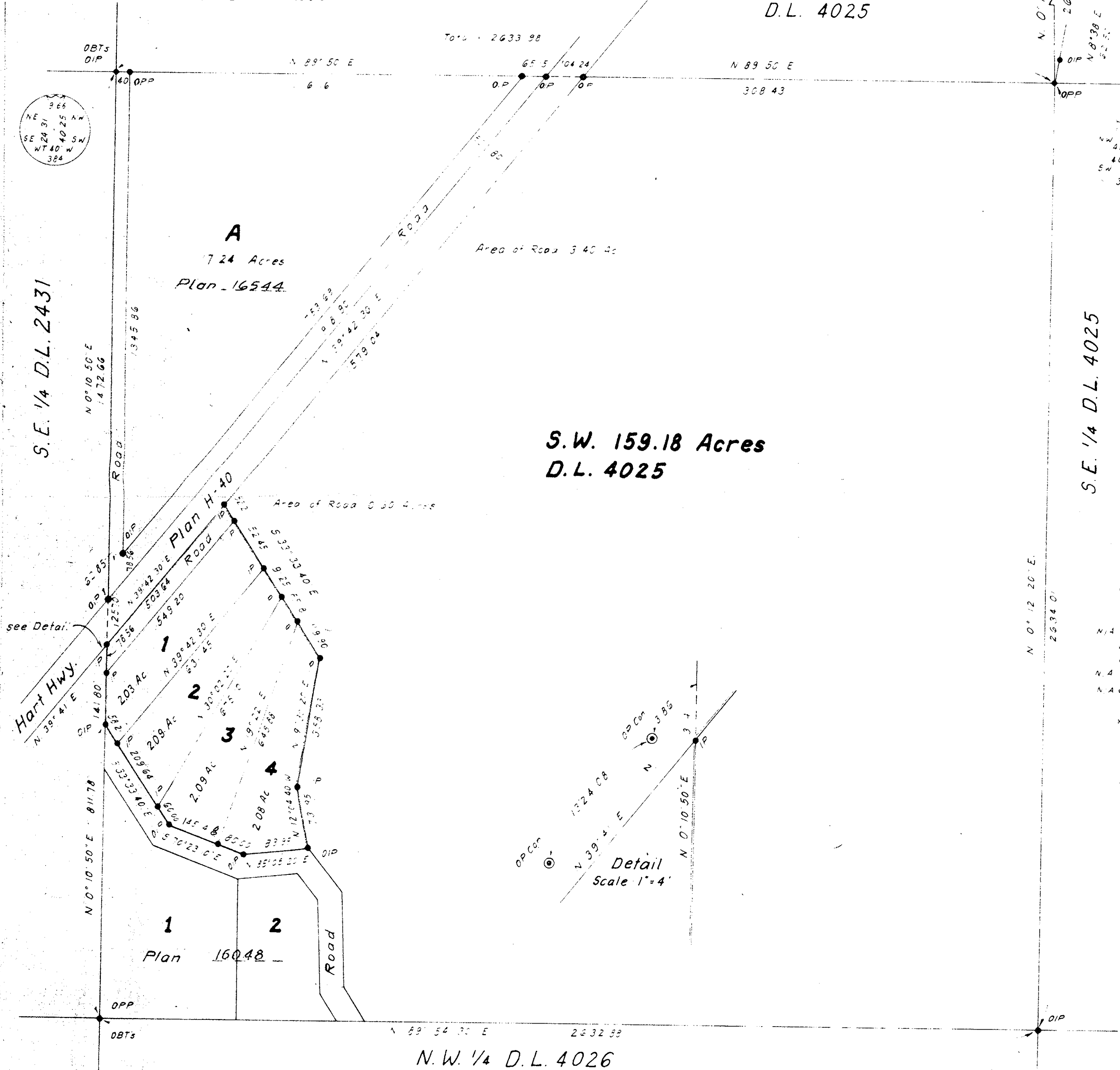
J. H. Laidlaw



S.E. 1/4 D.L. 2431

S.E. 1/4 D.L. 4025

S.W. 159.18 Acres
D.L. 4025



old Concrete Monuments found shown on
Plan H-40 as N 39° 41' E

R.J. Gobie City of Prince George

22nd June 1966

Prince George
29th June 1966

24th August 66

James

James H. White
J. H. Laidlaw
as to both signatures