

Plan of Subdivision of the Whole of Parcel A, of
Plan 10868, District Lot 936
Cariboo District

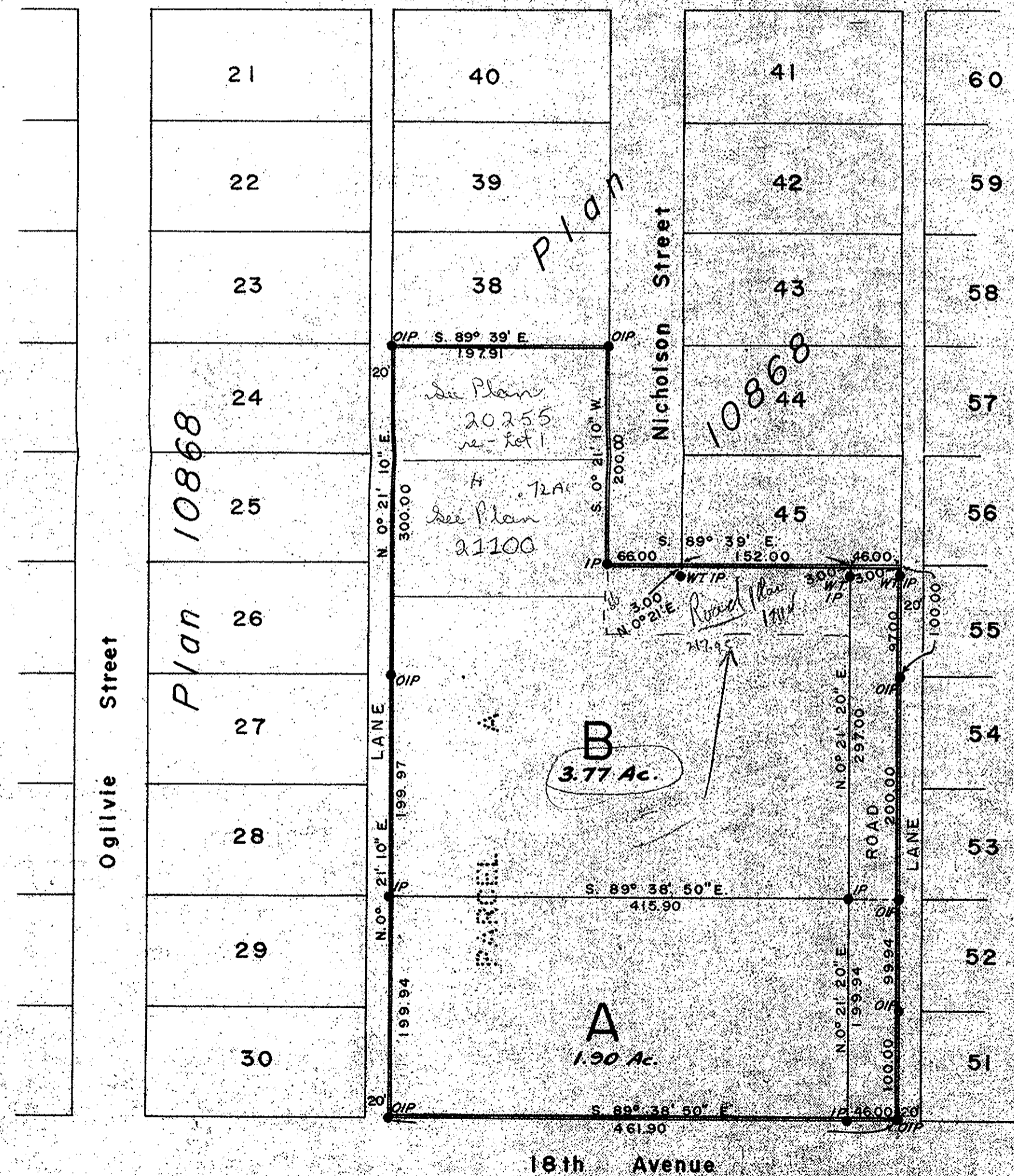
Scale: 1" = 100'

Plan No 16524

Deposited in the Land Registry Office at
Prince George... this 12 day of Sept... 1966

A. W. Carlow
Registrar

COPY SENT TO ENGINEERING
14/10/66 gk



Bearings are astronomic and are derived from
the west boundary of Parcel A of
Plan 10868.

- P.con. ----- Standard Concrete Post.
- P.Rock ----- Standard Rock Post.
- P.P. ----- Standard Pipe Post.
- I.P. ----- Standard Iron Post.
- P. ----- Wooden Post.
- L.P. ----- Lead Plug.
- ----- Denoting "Old"
- WT. ----- Denoting "Witness"

I, A. Daniluck of the city of Prince George,
British Columbia Land Surveyor, make oath and
say that I was present at and did personally
superintend the survey represented by this
plan and that the survey and plan are correct.
The said survey was completed on
the 1st day of September, 1966.

A. Daniluck
B.C.L.S.

Sworn before me at Prince George, B.C.
this 1st day of September, 1966.

W. J. P. O'Neil
A Commissioner for taking of affidavits
within British Columbia.

Approved under the Land Registry Act
on the 8th day of Sept. 1966

C. E. Olat P. Eng.
Approving Officer, City of
Prince George

The Seal of the
City of Prince George
was affixed hereto in
the presence of

W. J. P. O'Neil
MAYOR
W. J. P. O'Neil
Acting City Clerk

#16524