

PLAN OF SUBDIVISION OF PART OF  
 LOT A - PLAN 14790 EXCEPT PLAN 15791  
**DISTRICT LOT 4041**  
 CARIBOO DISTRICT - BRITISH COLUMBIA  
 SCALE: 1" = 200'

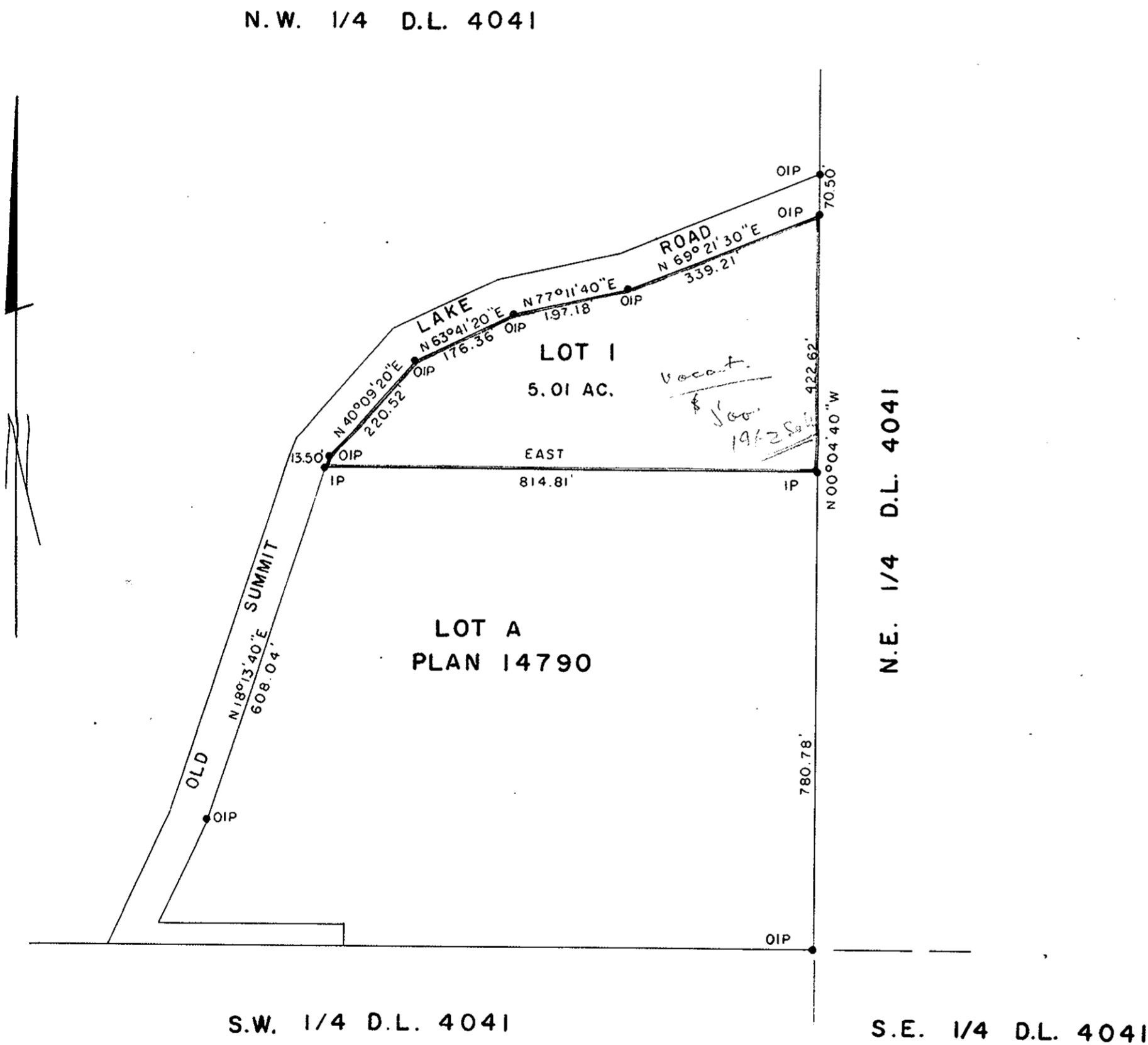
PLAN No **16513**  
 Deposited in the Land Registry  
 Office at Prince George, B.C. this  
 22 day of Aug, 1966.

T. W. Carlow  
 Registrar

NOTE: Bearings are astronomic, derived from the  
 East Boundary of Lot A, Plan 14790.

**RECEIVED**  
 SEP 21 1966  
 PROVINCIAL ASSESSOR  
 PRINCE GEORGE, B. C.

LEGEND: ● OIP denotes an old iron pin found.  
 ● IP denotes an iron pin placed on this survey.



I, DONALD A. DUFFY, of the City of Prince George,  
 a British Columbia Land Surveyor, make oath and say  
 that I was present at and did personally superintend  
 the survey represented by this plan and that the  
 survey and plan are correct. The said survey was  
 completed on the 3rd day of June, 1965.

Donald A. Duffy  
 B.C.L.S.

Sandra Evelyn (last name illegible)  
 Owner

Sworn before me this 4  
 day of JUNE, 1965.

Alice M. Friend  
 Witness

A Commissioner for taking Affidavits  
 within the Province of British Columbia

PRINCE GEORGE AND DISTRICT  
 CREDIT UNION  
J. Ryan President  
E. Blair Treasurer

**REAPPROVED**  
[Signature]  
 APPROVING OFFICER, DEPT. OF HWYS.  
 JUNE 30th, 1966.

Approved under the Land Registry Act  
 this 28 day of JUNE, 1965.

[Signature]  
 Approving Officer, Dept. of Highways.

**REAPPROVED:**  
[Signature]  
 APPROVING OFFICER, DEPT. OF HWYS.  
 OCTOBER 6th, 1965.

N.D. USHER & ASSOCIATES  
 LAND SURVEYORS  
 PRINCE GEORGE, B. C.  
 X-71 1561