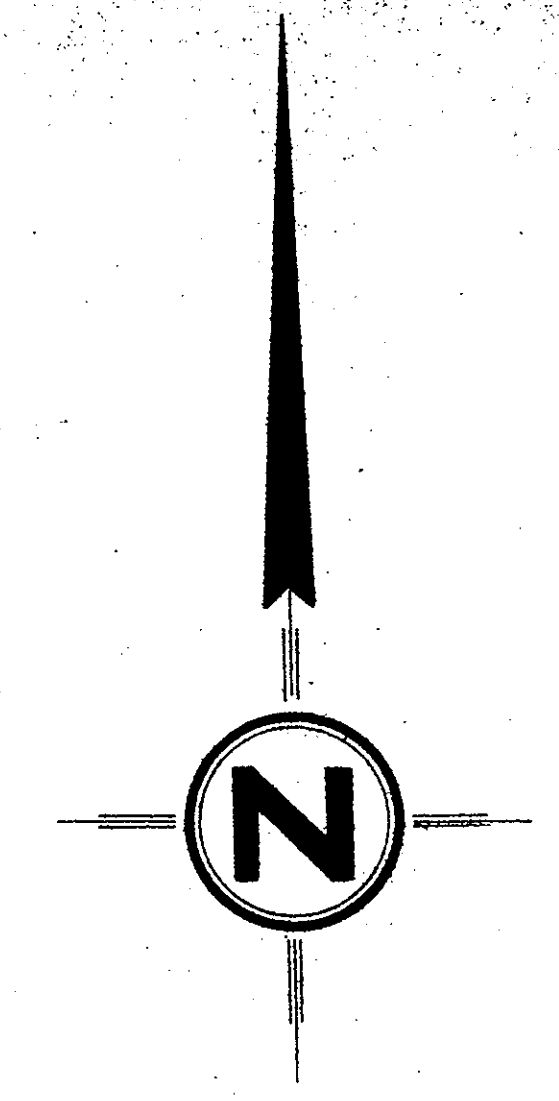


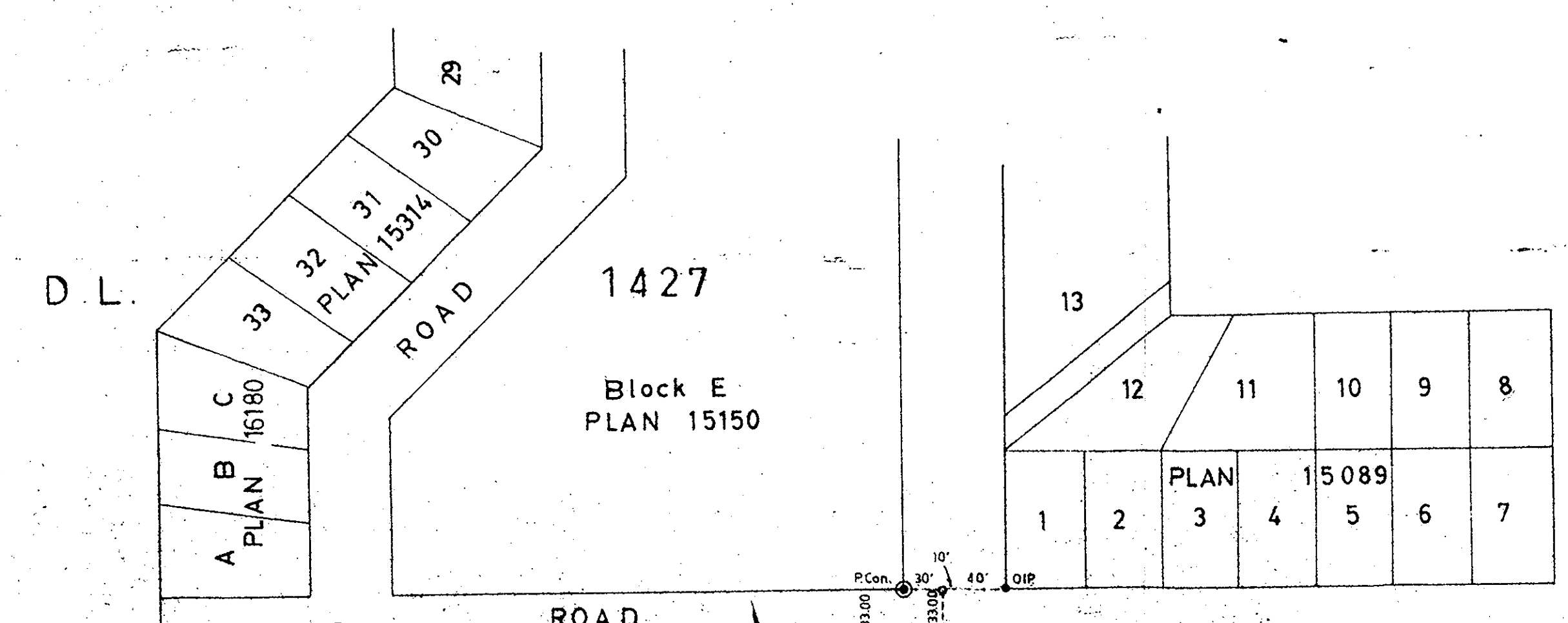
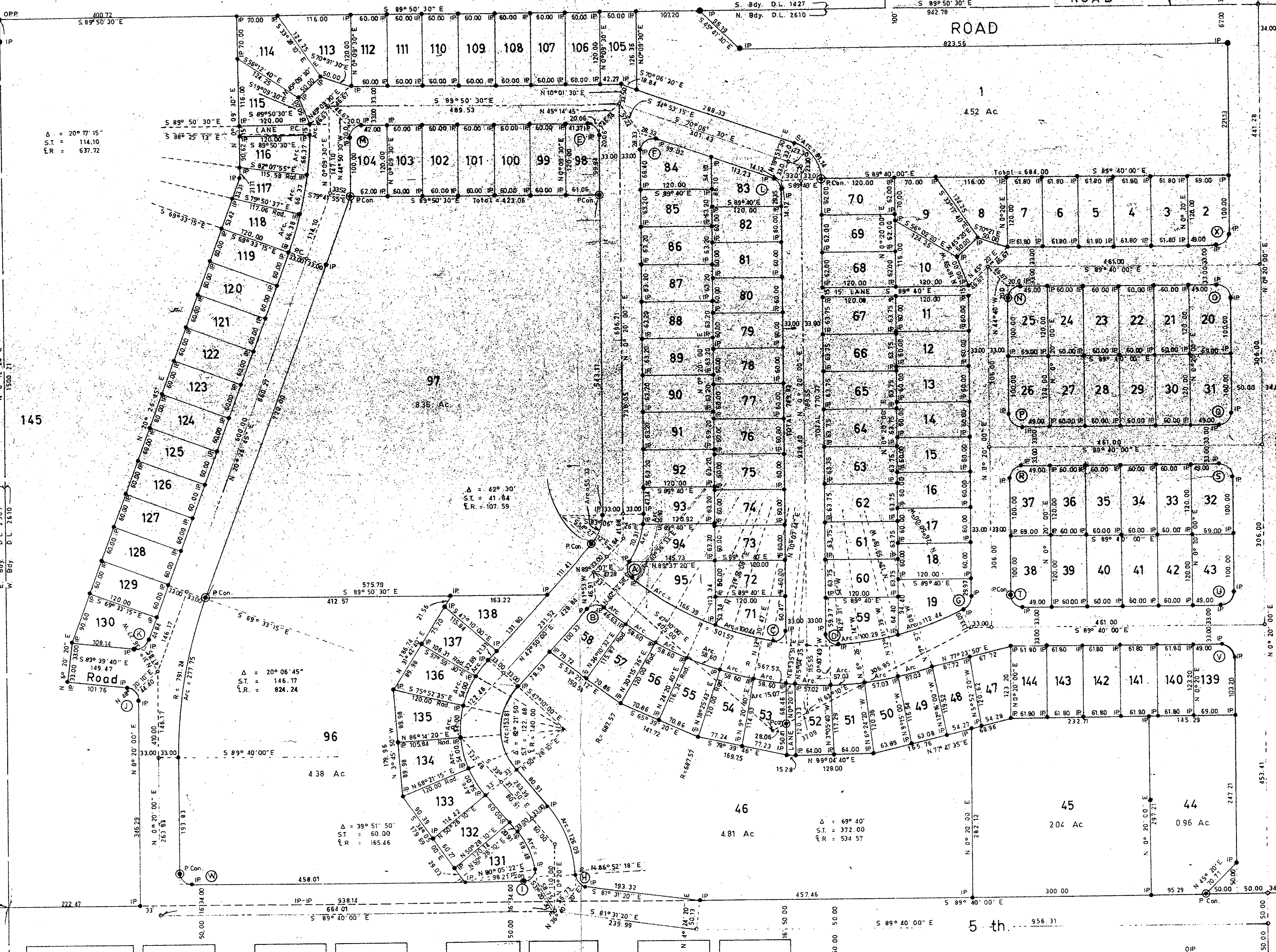
D.L. 1530  
 PLAN 847  
 D.L. 2608  
 Blk 97 Blk 88 Blk 73 Blk 64

PLAN 1474  
 D.L. 482  
 Blk 3  
 Blk 4  
 Blk 9  
 Blk 10  
 Blk 11

Parcel Y  
 PLAN 847  
 D.L. 2507  
 Blk 54 Blk 45 Blk 40 Blk 31



A	A = 899'58"	D	A = 827'50"	M to X intersection	A = 802'00"
B	A = 180'00"	E	A = 180'00"		R = 20.00
C	A = 180'00"	F	A = 180'00"		R = 20.00
D	A = 180'00"	G	A = 180'00"		R = 20.00
E	A = 180'00"	H	A = 180'00"		R = 20.00
F	A = 180'00"	I	A = 180'00"		R = 20.00
G	A = 180'00"	J	A = 180'00"		R = 20.00
H	A = 180'00"	K	A = 180'00"		R = 20.00
I	A = 180'00"	L	A = 180'00"		R = 20.00
J	A = 180'00"	M	A = 180'00"		R = 20.00
K	A = 180'00"	N	A = 180'00"		R = 20.00
L	A = 180'00"	O	A = 180'00"		R = 20.00
M	A = 180'00"	P	A = 180'00"		R = 20.00
N	A = 180'00"	Q	A = 180'00"		R = 20.00
O	A = 180'00"	R	A = 180'00"		R = 20.00
P	A = 180'00"	S	A = 180'00"		R = 20.00
Q	A = 180'00"	T	A = 180'00"		R = 20.00
R	A = 180'00"	U	A = 180'00"		R = 20.00
S	A = 180'00"	V	A = 180'00"		R = 20.00
T	A = 180'00"	W	A = 180'00"		R = 20.00
U	A = 180'00"	X	A = 180'00"		R = 20.00
V	A = 180'00"	Y	A = 180'00"		R = 20.00
W	A = 180'00"	Z	A = 180'00"		R = 20.00



**PLAN OF SUBDIVISION**  
 Prepared pursuant to the replotting provisions of the  
 Municipal Act of Parcel shown outlined in red on  
 Reference Plan .....  
 of Lots 16 to 30 inclusive, Block 8,  
 Lots 13 to 24 inclusive, Block 9,  
 Lots 13 to 24 inclusive, Block 10,  
 Lots 13 to 24 inclusive, Block 11,  
 Blocks 18 to 25 inclusive, Blocks 32 to 39 inclusive,  
 Blocks 46 to 51 inclusive, Blocks 63, 74, 87 and 98  
 and Assigned Parcel X, Plan 847, District Lots 2507 and 2610,  
 and Roads and Lanes contained therein

**CARIBOO DISTRICT**  
 SCALE 1" = 100'

**LEGEND**  
 Bearings are astronomic and are derived from OIPs  
 and OPP found on the South Boundary of D.L. 1477,  
 shown as S 89°52'30" E on Plan 15089.

Sworn before me at Prince George, B.C.  
 this ..... day of ..... 1966.  
 A Commissioner for taking affidavits,  
 within British Columbia.  
 Approved under the Land Registry Act  
 this ..... day of ..... 1966.  
 Appointing Officer - City of Prince George  
 The Seal of the City of Prince George  
 was affixed hereto in the presence of

McWilliam, Whyte, Serle & Goble  
 British Columbia Land Surveyors  
 1595-5th Ave. Prince George, B.C.

Checked F S D X Ref No. 66100-2 B