

PLAN OF SUBDIVISION
OF PART OF
DISTRICT LOT 10223
CARIBOO DISTRICT - BRITISH COLUMBIA

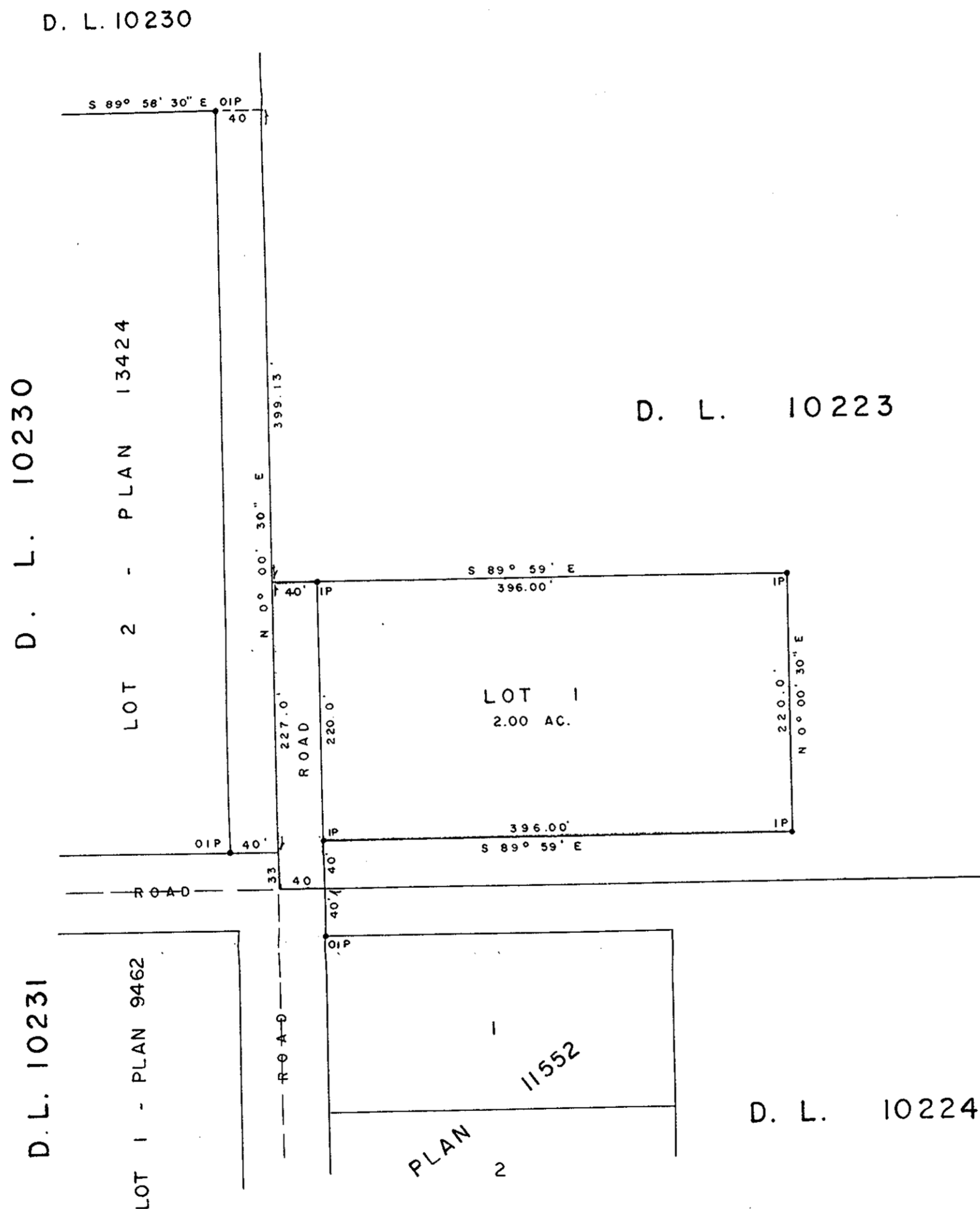
PLAN No 16496
Deposited in the Land Registry
Office at Prince George, B.C. this
10th day of AUGUST, 1966

J. H. Carbo
Registrar

SCALE: 1" = 100'

NOTE: Bearings are astronomic, derived from the
East Boundary of Lot 2, Plan 13424.

LEGEND: • OIP denotes an old iron pin found.
• IP denotes an iron pin placed on this survey.



I, DONALD A. DUFFY, of the City of Prince George,
a British Columbia Land Surveyor make oath and say
that I was present at and did personally superintend
the survey represented by this plan and that the survey
and plan are correct. The said survey was completed
on the 15th day of JUNE, 1966.

D. Duffy
B. C. L. S.

Sworn before me this 16th
day of AUGUST, 1966.

J. Coleman
A Commissioner for taking Affidavits
within the Province of British Columbia.

S. H. [Signature]
Owner

J. Coleman
Witness

Approved under the Land Registry Act
this 15th day of AUGUST, 1966.

[Signature]
Approving Officer, Dept. of Highways.