

PLAN OF SUBDIVISION OF  
 LOT 12 - PLAN 15861  
 AND PART OF  
 LOT A - PLAN 15725, EXCEPT PLAN 15861  
**DISTRICT LOT 4047**  
 CARIBOO DISTRICT - BRITISH COLUMBIA

PLAN N<sup>o</sup> 16456  
 Deposited in the Land Registry  
 Office at Prince George, B.C. this  
28<sup>th</sup> day of July, 1966.

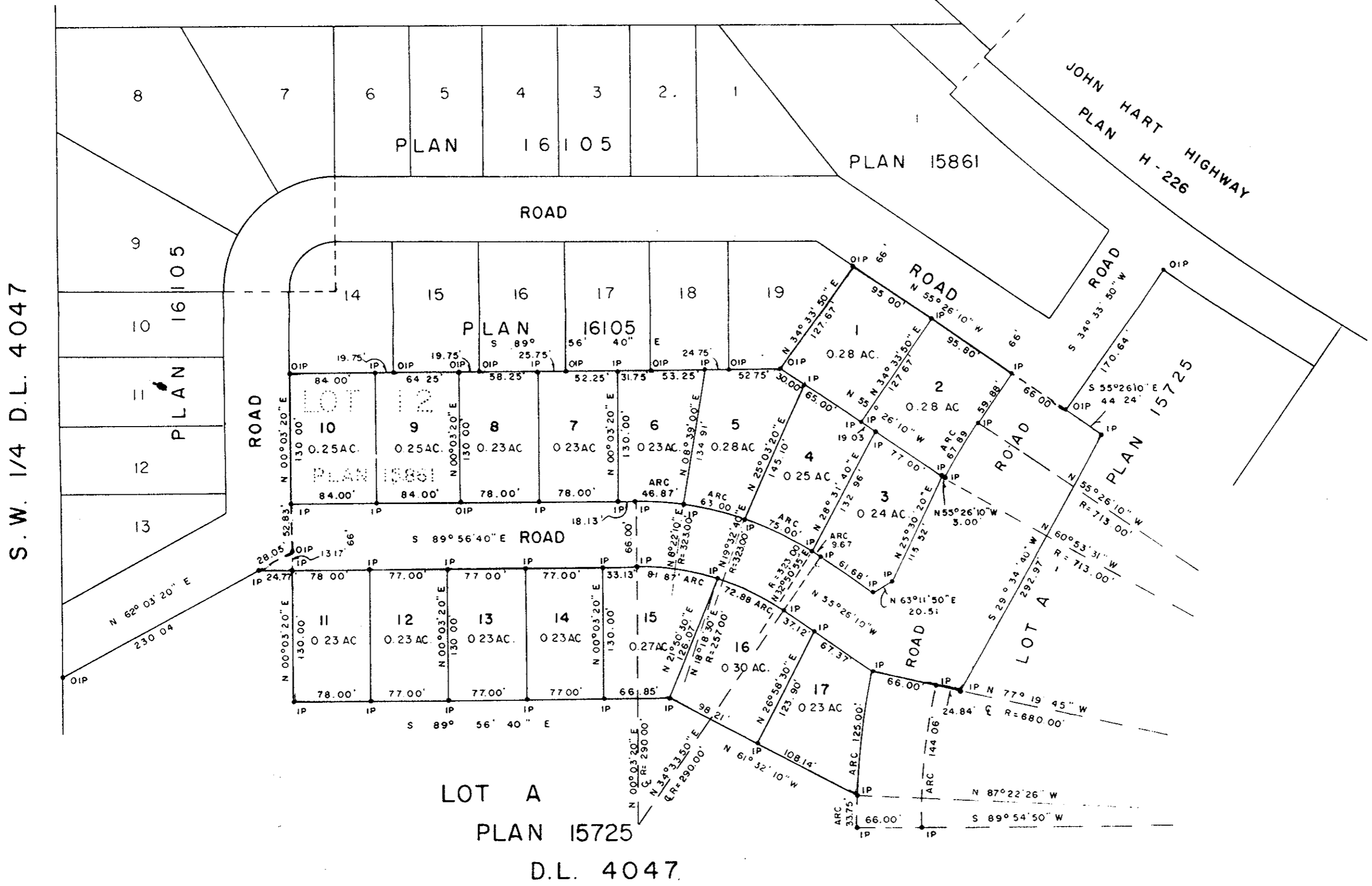
*P. H. Carlow*  
 Registrar

SCALE: 1" = 100'

NOTE: Bearings are astronomic, derived from the  
 South boundary of Lots 14-19, Plan 16105

LEGEND: ● OIP denotes an old iron pin found.  
 ● IP denotes an iron pin placed on this survey.

LOT B - PLAN 7335 - D.L. 4047



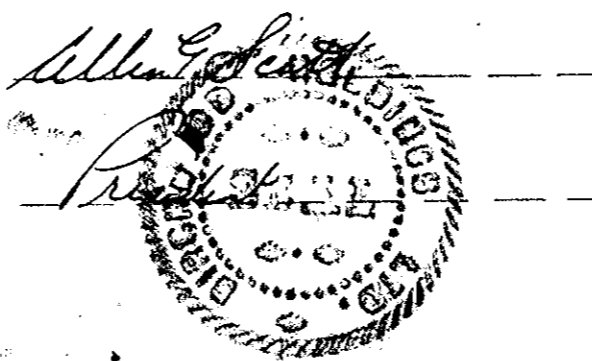
I, DONALD A. DUFFY, of the City of Prince George,  
 a British Columbia Land Surveyor make oath and say  
 that I was present at and did personally superintend  
 the survey represented by this plan and that the survey  
 and plan are correct. The said survey was completed  
 on the 13th day of JUNE, 1966.

*Donald A. Duffy*  
 B.C.L.S.

Sworn before me this 20<sup>th</sup>  
 day of JULY, 1966.

*[Signature]*  
 A Commissioner for taking Affidavits  
 within the Province of British Columbia.

BIRCHWOOD HOLDINGS LTD.



Approved under the Land Registry Act  
 this 19<sup>th</sup> day of July, 1966

*W. D. Usher*  
 Approving Officer, Dept. of Highways.

W. D. USHER & ASSOCIATES  
 LAND SURVEYORS  
 PRINCE GEORGE - B.C.  
 AU & AZ 65,70 1568 B