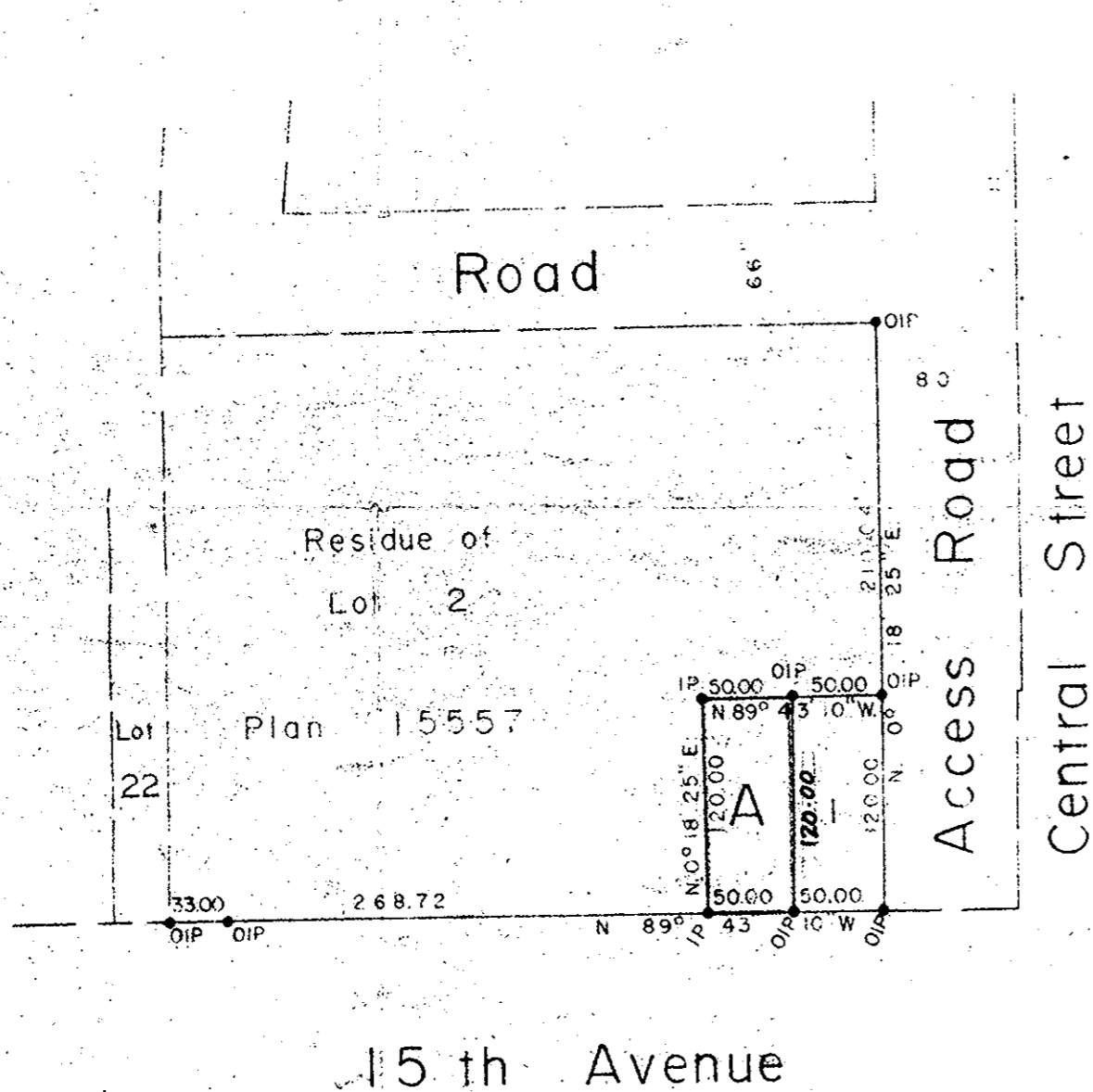


Plan of Subdivision of  
Part of Lot 2, Plan 15557  
District Lot 936  
Cariboo District

Scale 1" = 100'



PLAN 16439

Deposited in the Land Registry Office  
at Prince George B.C., on the 11<sup>th</sup> day of July 1966

*A. Daniluck*  
Registrar

Bearings are astronomic and are derived from  
Plan 15557

● P Con	Standard Concrete Post
● P Rock	Standard Rock Post
● PP	Standard Pipe Post
● IP	Standard Iron Post
○ P	Wooden Post
■ LP	Lead Plug
○	Denoting "Old"
WT.	Denoting "Witness"

I, A. Daniluck of the city of Prince George,  
British Columbia Land Surveyor, make oath and  
say that I was present at and did personally  
superintend the survey represented by this  
plan and that the survey and plan are correct  
The said survey was completed on  
the 11th day of June 1966

*A. Daniluck*  
R.C.L.S.

Sworn before me at Prince George  
this 11th day of June 1966

Approved under the Land Registry Act  
on the 21<sup>st</sup> day of JUNE 1966

*C. E. Obot* P. Eng.  
Approving Officer  
City of Prince George

*A. Daniluck*  
A commissioner for taking affidavits  
within British Columbia

Owner

Witness

McWilliam - Whyte - Serie - Goble  
B.C. Land Surveyors

Kamloops - Prince George

Checked [ ] [ ] [ ] [ ] [ ] [ ] [ ] [ ] [ ] [ ]  
Ref No 56100 14