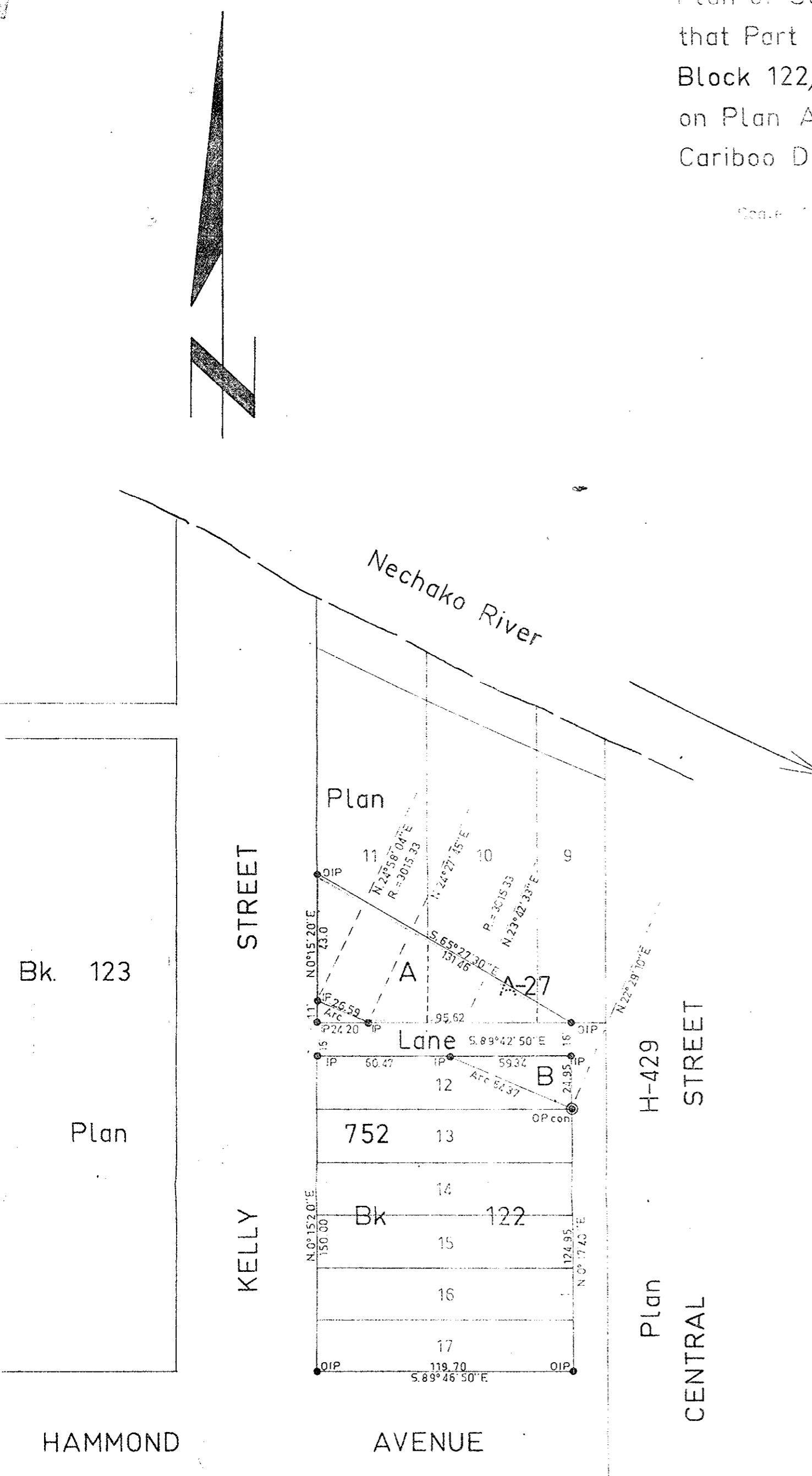


Plan of Subdivision of Part of
that Part of Lots 9, 10, 11 and 12,
Block 122, Plan 752; as shown
on Plan A-27. District Lot 938.
Cariboo District.

Scale: 1 inch = 50 feet

PLAN No 16713
Deposited in the Land Registry Office
in Prince George on the 4 day of July 1965

Register



Bearings are astronomic and are derived from
Plan H-429 as N0°17'40"E

- ⊙ P.con. Standard Concrete Post.
- ⊙ P.Rock Standard Rock Post.
- ⊙ P.P. Standard Pipe Post.
- ⊙ I.P. Standard Iron Post.
- P. Wooden Post.
- L.P. Lead Plug.
- Denoting "Old"
- WT. Denoting "Witness"

I, R.J. Goble of the city of Prince George,
British Columbia Land Surveyor, make oath and
say that I was present and did personally
superintend the survey represented by this
plan and that the survey and plan are correct.
The said survey was completed on
the 10th day of August, 1965.

Sworn before me at Prince George, B.C.
this 12th day of Aug 1965.

A commissioner for taking affidavits
within British Columbia.

Approved under the Land Registry Act
on the 19 day of AUG 1965

Rufus
Approving Officer
City of Prince George

RE CANADIAN NATIONAL RAILWAY COMPANY

Re-approved under the Land Registry Act

on the 1 day of Nov 1965

18 Mar. 66 *Rufus*

Rufus
Approving Officer
City of Prince George

R.J. Goble
General Manager of Real Estate

R.J. Goble
Assistant Secretary

Re-approved under the Land Registry Act
on the 26 day of July 1966

R. E. Olot P. Eng.
APPROVING OFFICER
CITY OF PRINCE GEORGE

McWilliam Whyte Serie Goble	
B.C. Land Surveyors	
Kamloops Prince George	
Checked	f - d x Ref No 6510e

SD187