

Easterly boundaries
22, said boundaries being
ing to the state on the
ee with dimensions

ty Act, see filing B16311.

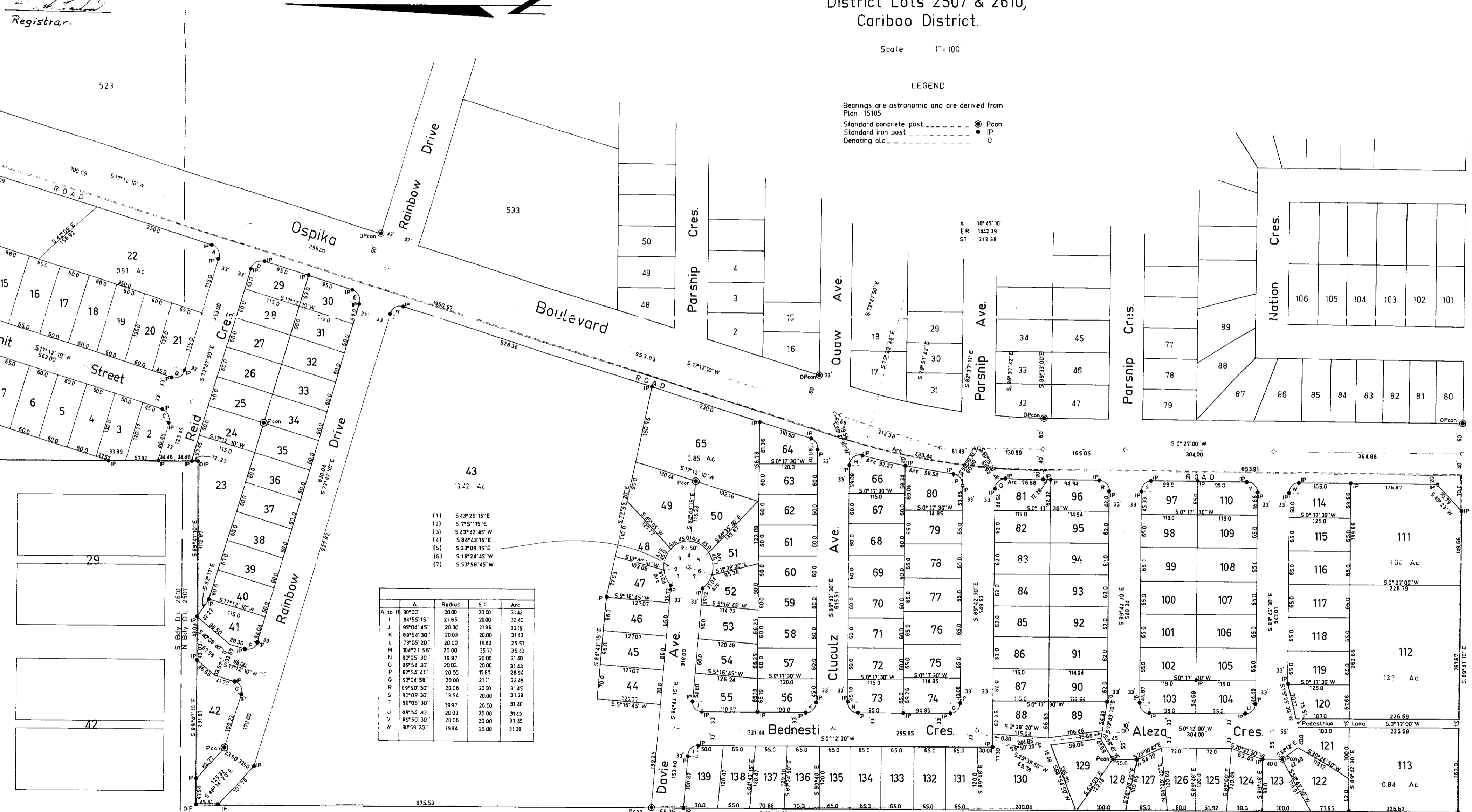
Registrar.

Plan of Subdivision of Lot 1, Plan 15185, District Lots 2507 & 2610, Cariboo District.

Scale 1"=100'

LEGEND

Bearings are astronomic and are derived from
Plan 15185.
Standard concrete post Pcon
Standard iron post IP
Denoting old. 0



A to H	Δ	Radius	S.T.	Arc
I	84°55'15"	21.86	20.00	31.42
J	85°04'45"	20.00	21.86	33.79
K	89°54'30"	20.00	20.00	37.43
L	77°05'20"	20.00	14.82	25.51
M	104°21'56"	20.00	25.77	36.43
N	90°03'30"	19.97	20.00	31.40
O	89°54'30"	20.00	21.43	31.43
P	82°54'41"	20.00	17.67	28.94
Q	93°04'58"	20.00	21.11	32.49
R	89°50'30"	20.06	20.00	31.45
S	90°09'30"	19.94	20.00	31.38
T	90°05'30"	19.97	20.00	31.40
U	89°54'40"	20.03	20.00	31.43
V	89°50'30"	20.06	20.00	31.45
W	90°25'30"	19.94	20.00	31.38

Plan No. 16227

Deposited in the Land Registry Office at Kamloops, B.C.
on the 27 day of April 1966

Registrar

Subject to the conditions imposed by my Order dated _____
I allow this subdivision to be made and evidenced in the manner prescribed
by section 60(1) Land Registry Act, Chapter 208 R.S.B.C. 1960.
Dated at Victoria, B.C., this 30th day of March, A.D. 1966.

SURVEYOR GENERAL

The conditions of the above mentioned Order are accepted

Name of Subdivider
City of Prince George, B.C.

Mayor
Clerk

The Order of the Surveyor General dated _____
has been filed in the Land Registry Office at Kamloops, B.C.
as number _____

Registrar of Titles

I, R. J. Goble of the City of Prince George
British Columbia Land Surveyor, make oath
and say that I was present at and did
personally superintend the survey
represented by this plan and that the
survey and plan are correct.
The said survey was completed on
the 23rd day of FEB 1966.

B.C.L.S.

Sworn before me at Prince George
this 25th day of FEB 1966.

Commissioner for taking affidavits
within British Columbia

Approved under the Land Registry Act
on the 6 day of APR 1966

Approving Officer
City of Prince George

The Seal of the Corporation
of the City of Prince George,
was affixed hereto
in the presence of

Mayor

Clerk

Lots 12 to 21 inclusive corrected as to the easterly boundaries including the boundary common to lot 22, said boundaries being misplotted approximately 4 feet according to the scale on the plan. Dimensions are correct and agree with dimensions established in the field.
Corrected under sec. 111 of the Land Registry Act, see filing B16311.

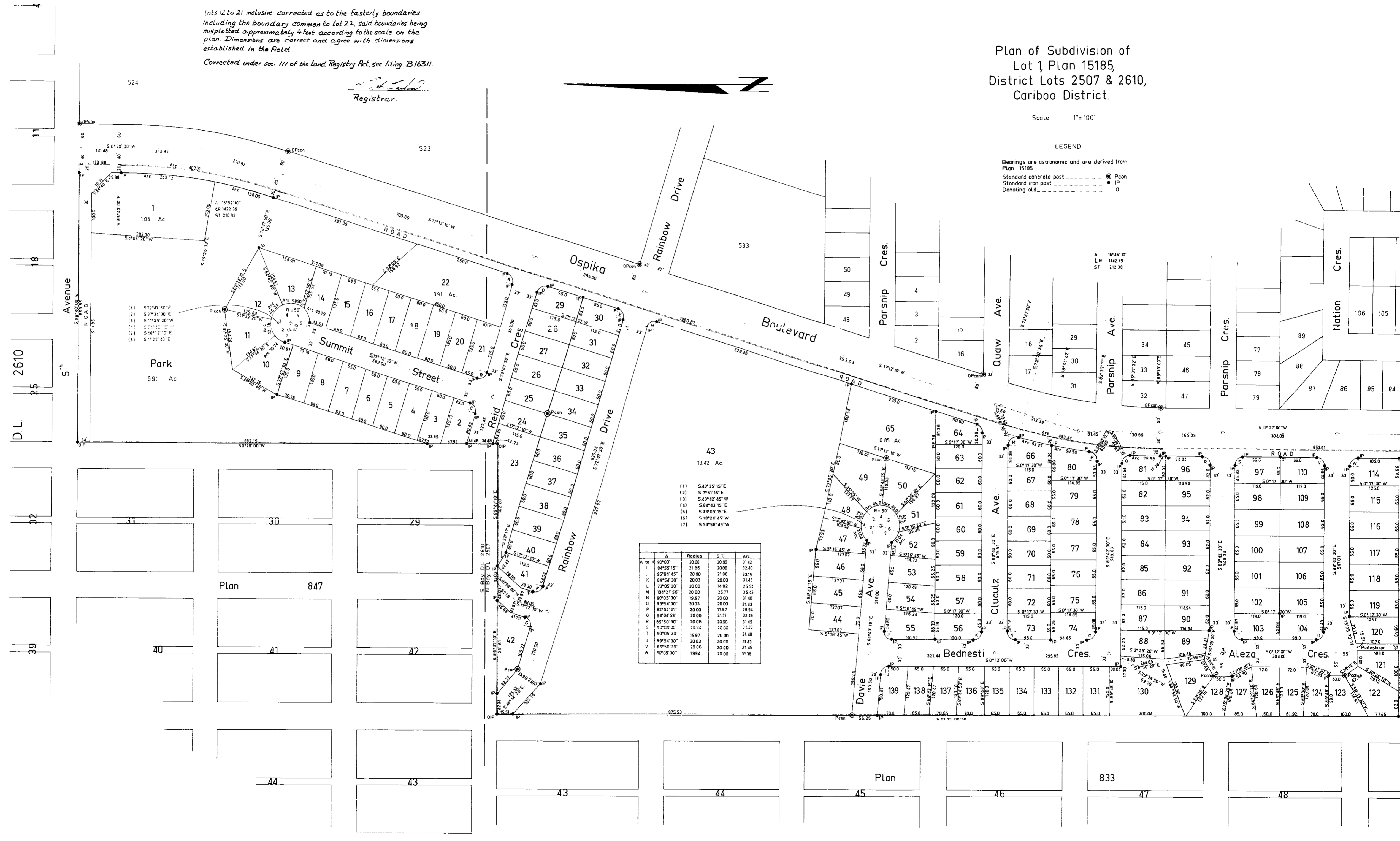
[Signature]
Registrar.

Plan of Subdivision of Lot 1, Plan 15185, District Lots 2507 & 2610, Cariboo District.

Scale 1"=100'

LEGEND

Bearings are astronomic and are derived from Plan 15185
Standard concrete post \bullet Pcon
Standard iron post \circ IP
Denoting old \circ O



- (1) S 72°47'50" E
- (2) S 37°34'30" W
- (3) S 11°39'20" W
- (4) S 89°40'00" E
- (5) S 48°12'10" E
- (6) S 1°27'40" E

- (1) S 47°35'15" E
- (2) S 7°51'15" E
- (3) S 43°42'45" W
- (4) S 84°43'15" E
- (5) S 33°09'15" E
- (6) S 18°24'45" W
- (7) S 53°58'45" W

A to H	A	Radius	S.T.	Arc
A	80°00'	20.00	20.00	31.42
J	84°55'15"	21.86	20.00	32.40
K	89°04'45"	20.00	21.86	33.76
L	89°54'30"	20.03	20.00	34.43
M	72°05'20"	20.00	14.82	25.51
N	104°21'56"	20.00	25.77	36.43
O	90°05'30"	19.97	20.00	31.40
P	89°54'30"	20.03	20.00	31.43
Q	82°54'41"	20.00	17.67	28.94
R	93°04'58"	20.00	21.11	32.49
S	89°50'30"	20.06	20.00	31.45
T	90°05'30"	19.94	20.00	31.38
U	89°54'30"	20.03	20.00	31.43
V	89°50'30"	20.06	20.00	31.45
W	90°09'30"	19.94	20.00	31.38

Plan 847

Plan

833

terly boundaries
said boundaries being
g to the scale on the
with dimensions

and Registry Act see filing B 16311.

Registrar

Plan No. 16227
Deposited in the Land Registry Office at
Prince George this 27 day of April 1967

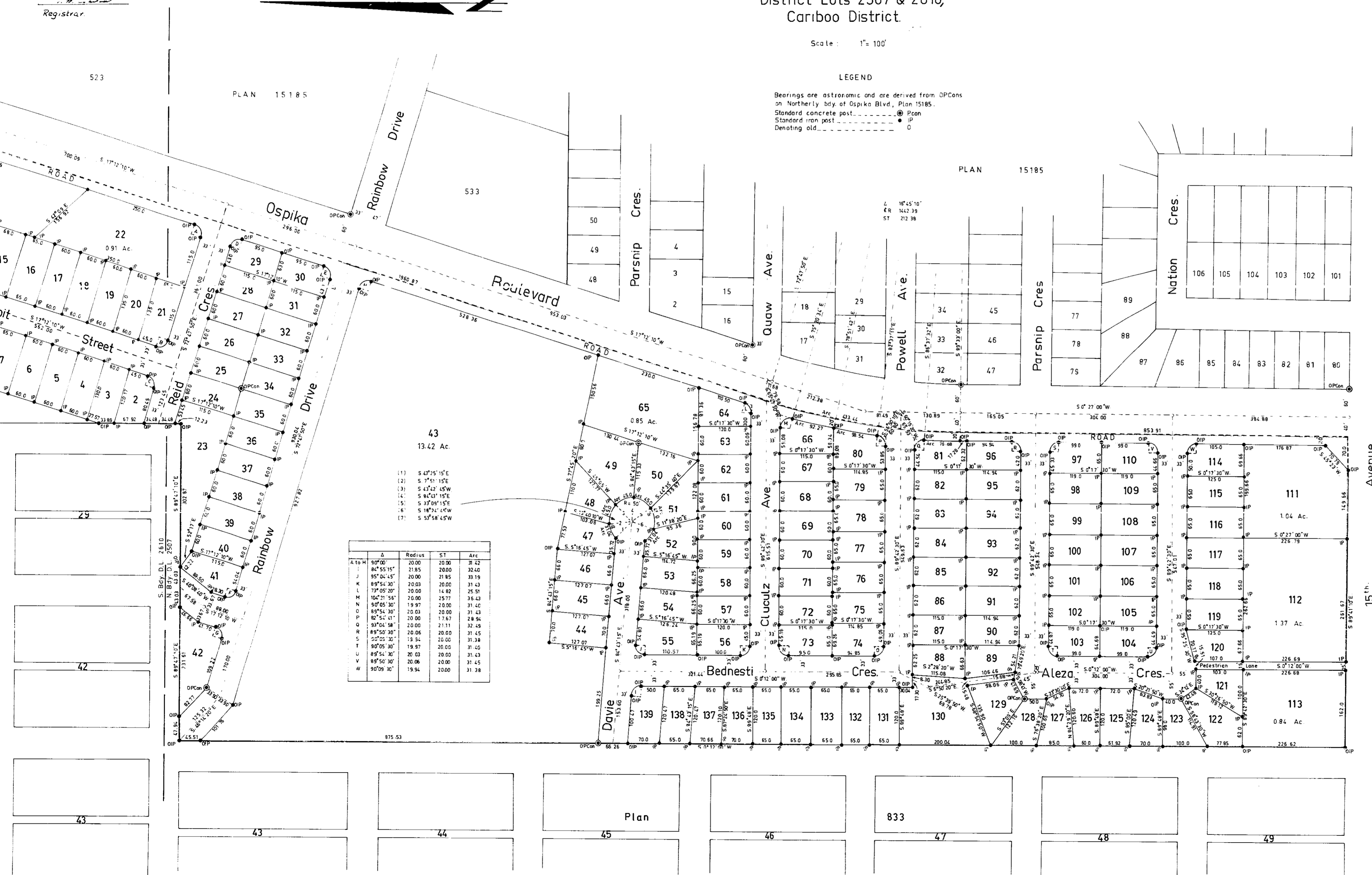
Registrar

Plan of Subdivision of Lot 1, Plan 15185, District Lots 2507 & 2610, Cariboo District.

Scale: 1" = 100'

LEGEND

Bearings are astronomic and are derived from OPCons
on Northernly bdy of Ospika Blvd., Plan 15185.
Standard concrete post: ●
Standard iron post: ○
Denoting old: 0



PLAN 15185

PLAN 15185

43
13.42 Ac.

- (1) S 47°25'15"E
- (2) S 7°51'15"E
- (3) S 47°42'45"W
- (4) S 82°23'15"E
- (5) S 37°09'15"E
- (6) S 18°24'45"W
- (7) S 53°58'45"W

A to H	Δ	Radius	ST	Arc
A	90°00'	20.00	20.00	31.42
J	84°55'15"	21.85	20.00	32.40
K	95°04'45"	20.00	21.85	33.19
L	89°54'30"	20.03	20.00	31.43
M	104°21'58"	20.00	25.77	36.42
N	80°05'30"	19.97	20.00	31.40
O	89°54'30"	20.03	20.00	31.43
P	82°54'41"	20.00	17.67	28.94
Q	93°04'36"	20.00	21.11	32.49
R	89°50'30"	20.06	20.00	31.45
S	102°05'30"	19.94	20.00	31.38
T	90°05'30"	19.97	20.00	31.40
U	89°54'30"	20.03	20.00	31.43
V	89°50'30"	20.06	20.00	31.45
W	90°09'30"	19.94	20.00	31.38

Approved under Section 80 (9) of the Land
Registry Act according to my Order dated
May 30 1966 and filed in the Land
Registry Office at Prince George B.C. at
number _____ Dated at Victoria,
B.C. this 25 day of April 1967.

Acting Surveyor General

I, R.J. Goble of the City of Prince George,
British Columbia Land Surveyor, make oath
and say that I was present at and did
personally superintend the survey
represented by this plan and that the
survey and plan are correct.
The said survey was completed on
the 29th day of June 1966.

Sworn before me at Prince George
this 27th day of March 1967

Approved under the Land Registry Act
on the 12th day of APRIL 1967.

C. E. Blot P. Eng.
Approving Officer
City of Prince George

A Commissioner for taking affidavits
within British Columbia.

The Seal of the Corporation
of the City of Prince George
was affixed hereto
in the presence of

Mayor

Clerk

Lots 12 to 21 inclusive corrected as to the Eastern boundaries including the boundary common to Lot 22, said boundaries being misplotted approximately 4 feet according to the scale on the plan. Dimensions are correct and agree with dimensions established in the field. Corrected under sec. 111 of the Land Registry Act see filing B 16311.

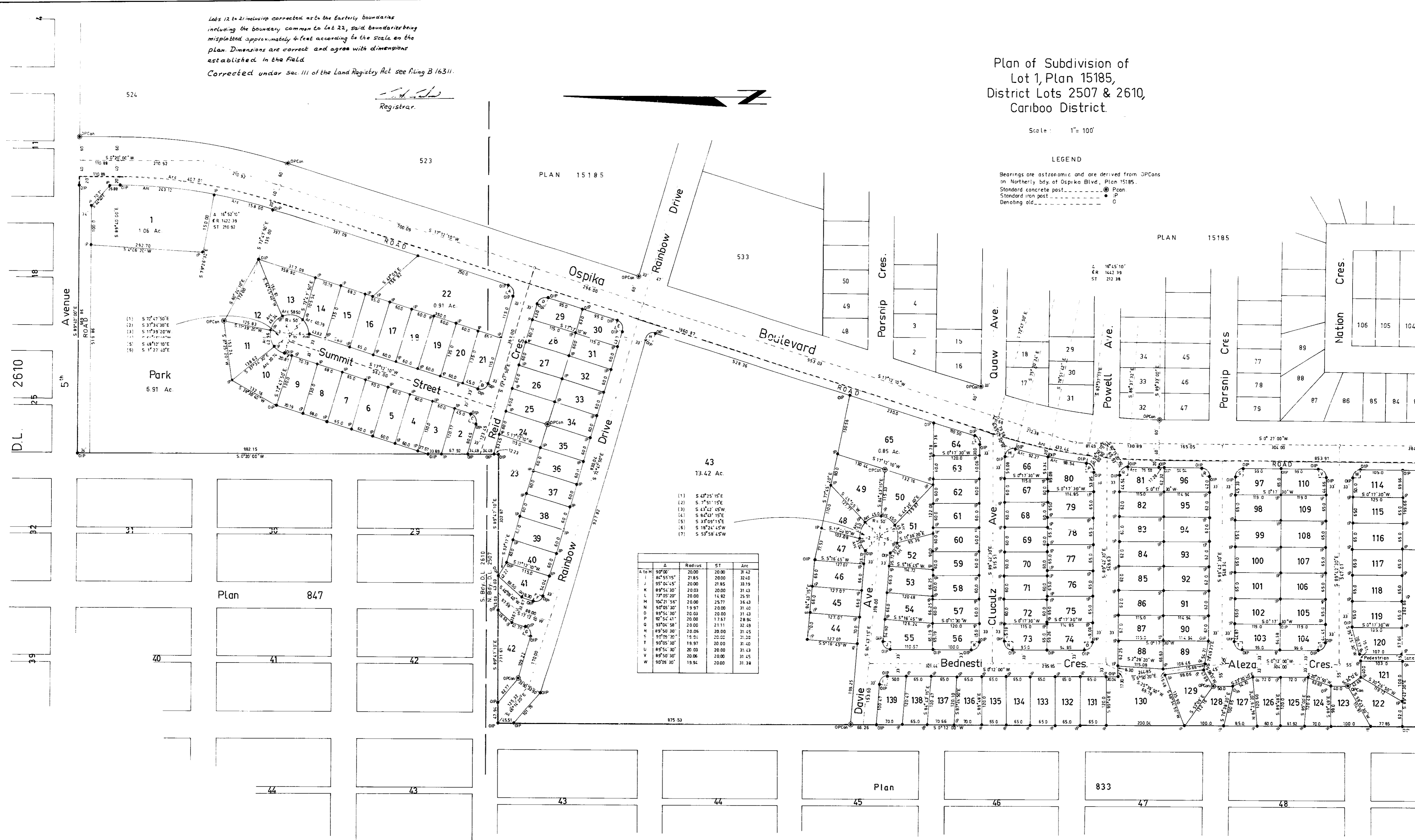
Registrar.

Plan of Subdivision of Lot 1, Plan 15185, District Lots 2507 & 2610, Cariboo District.

Scale 1" = 100'

LEGEND

Bearings are astronomic and are derived from OPCons on Northerly bdy. of Ospika Blvd., Plan 15185. Standard concrete post. Standard iron post. Denoting old.



PLAN 15185

PLAN 15185

Plan 847

Plan

833

A to H	Δ	Radius	ST	Arc
A	90°00'	20.00	20.00	38.42
B	84°55'15"	21.85	20.00	32.40
C	95°04'55"	20.00	21.85	33.19
D	89°54'30"	20.00	20.00	31.43
E	73°05'20"	20.00	14.92	25.51
F	104°21'55"	20.00	25.77	36.43
G	90°05'30"	19.97	20.00	31.40
H	89°54'30"	20.00	20.00	31.43
I	90°05'30"	19.97	20.00	31.40
J	90°05'30"	20.00	20.00	31.43
K	89°54'30"	20.00	20.00	31.45
L	90°05'30"	19.94	20.00	31.40
M	89°54'30"	20.00	20.00	31.45
N	90°05'30"	19.94	20.00	31.38