

Plan of Subdivision of Part of  
the S.E. 1/4 of District Lot 2422,  
Cariboo District.

Scale: 1" = 100'

Bearings are astronomic and are derived from  
the N. By of the N.W. 1/4 of D.L. 2422  
shown on Plan 6010 as N 69° 53' 30" E

Old iron posts found, shown ● OIP  
Old wooden posts found, shown ○ OP  
Iron posts set, shown ● IP

Plan No 16198

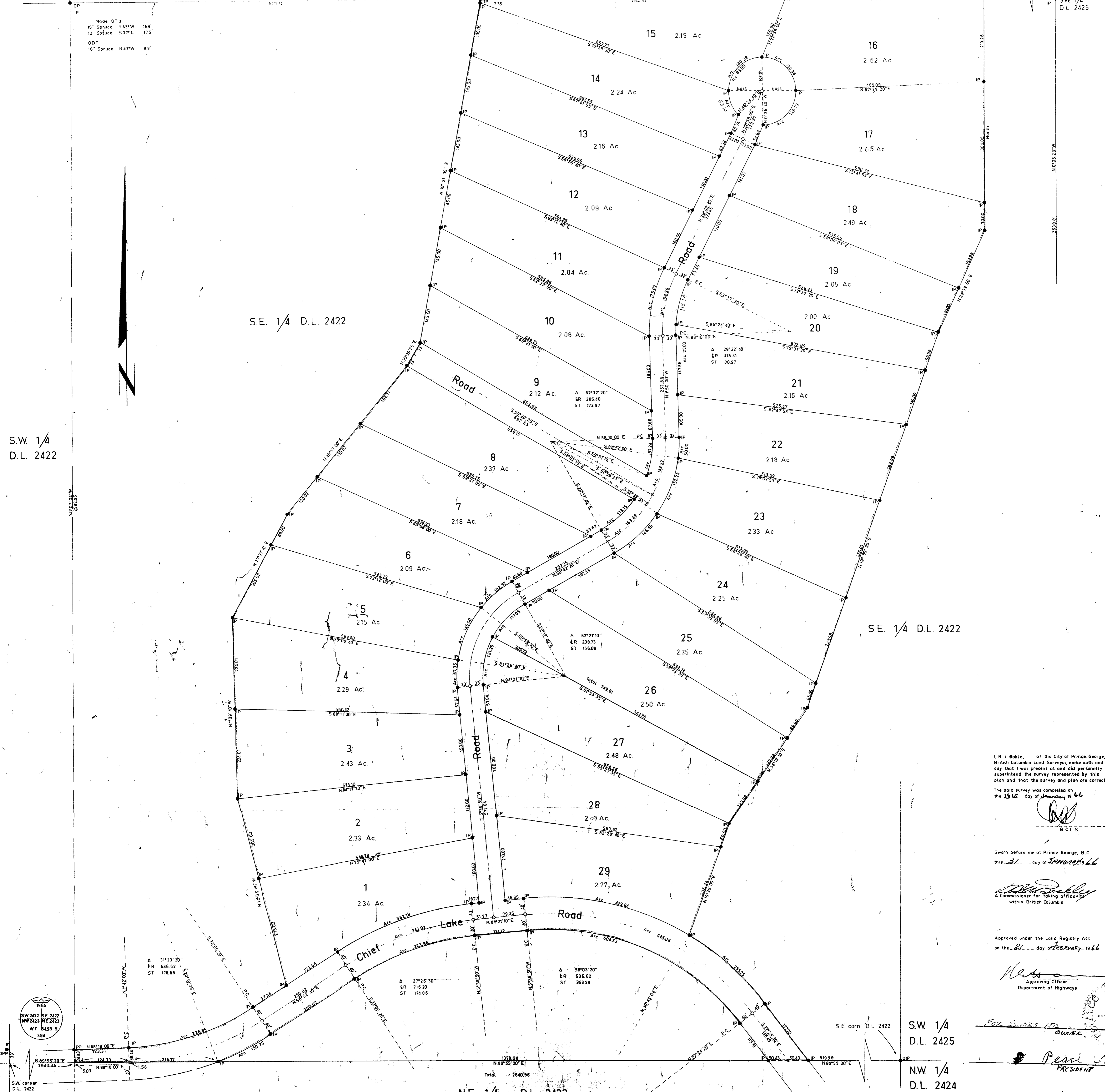
Deposited in the Land Registry Office at Kamloops, B.C.  
on the 15 day of April 1966

*H. H. H. H.*  
Registrar

NW 1/4  
D.L. 2422

N.E. 1/4 D.L. 2422

NW 1/4  
D.L. 2425  
SW 1/4  
D.L. 2425



I, R. J. Goble, of the City of Prince George, British Columbia, Land Surveyor, make oath and say that I was present at and did personally superintend the survey represented by this plan and that the survey and plan are correct.

The said survey was completed on the 25<sup>th</sup> day of January 1966

Sworn before me at Prince George, B.C. this 31<sup>st</sup> day of January 1966

*[Signature]*  
A Commissioner for Taking Affidavits within British Columbia

Approved under the Land Registry Act on the 21<sup>st</sup> day of February 1966

*[Signature]*  
Approving Officer  
Department of Highways

*[Signature]*  
PRESIDENT

McWilliam, Whyte, Serle & Goble  
British Columbia Land Surveyors  
Checked \_\_\_\_\_  
Ref. No. 65069-3

NW 1/4  
D.L. 2423

SE corner D.L. 2422  
SW 1/4  
D.L. 2425  
NW 1/4  
D.L. 2424

NE 1/4 D.L. 2423