

PLAN OF SUBDIVISION OF PARTS OF  
N.E. 1/4 & S.E. 1/4 OF  
DISTRICT LOT 4050  
CARIBOO DISTRICT - BRITISH COLUMBIA

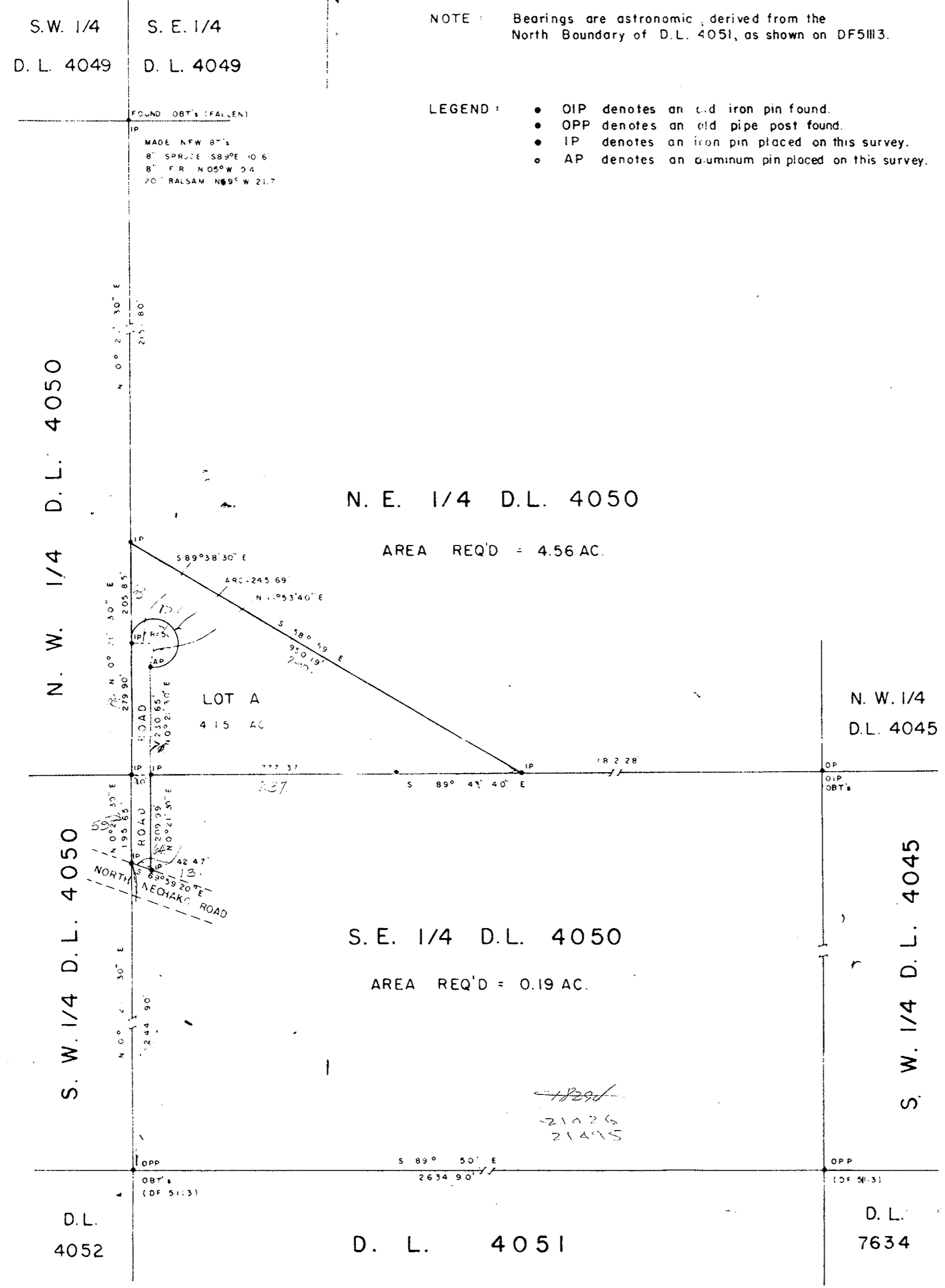
PLAN N<sup>o</sup> 16145  
Deposited in the Land Registry  
Office at Kamloops, B.C. this  
21<sup>ST</sup> day of March, 1966

*H. Kennedy*  
Registrar

SCALE: 1" = 200'

NOTE: Bearings are astronomic, derived from the  
North Boundary of D.L. 4051, as shown on DF5113.

LEGEND:  
• OIP denotes an old iron pin found.  
• OPP denotes an old pipe post found.  
• IP denotes an iron pin placed on this survey.  
• AP denotes an aluminum pin placed on this survey.



2141.90  
195.65  
2337.55

*E. Fairburn*

Owner

*R. J. Loos*

Witness

SUPERIOR GRAVEL CO. LTD.

PRESIDENT

SECRETARY

I, DONALD A. DUFFY, of the City of Prince George, a British Columbia Land Surveyor, make oath and say that I was present at and did personally superintend the survey represented by this plan and that the survey and plan are correct. The said survey was completed on the 15th day of December, 1965.

*D. Duffy*  
B.C.L.S.

Sworn before me this 15<sup>TH</sup> day of DECEMBER, 1965.

*Commissioner*  
A Commissioner for taking Affidavits within the Province of British Columbia.

Approved under the Land Registry Act this 28<sup>TH</sup> day of FEBRUARY, 1966.

*Approving Officer*  
Approving Officer, Dept. of Highways.