

PLAN OF SUBDIVISION OF PART OF
 N. 1/2 OF N. 1/2 OF S.E. 1/4 OF
DISTRICT LOT 2425
 CARIBOO DISTRICT - BRITISH COLUMBIA
 SCALE: 1" = 100'

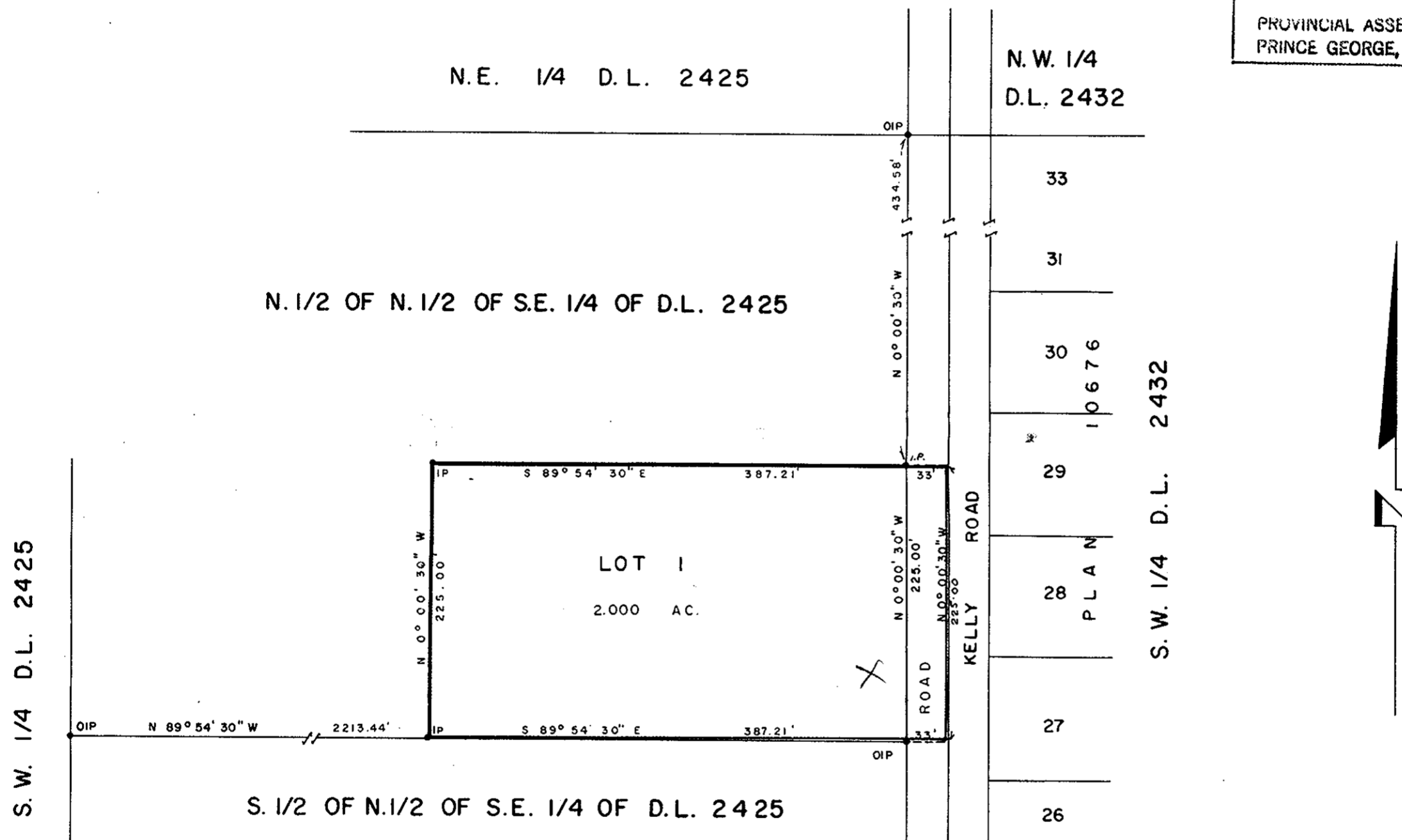
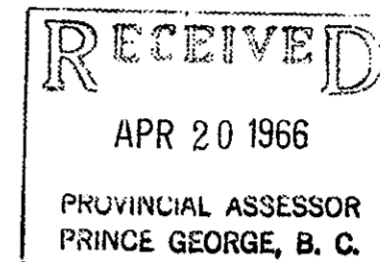
PLAN N^o 16134
 Deposited in the Land Registry
 Office at Kamloops, B.C. this
16 day of MARCH, 1966

NOTE: Bearings are astronomic, derived from the
 East Boundary of the N. 1/2 of N. 1/2 of S.E. 1/4
 of D.L. 2425 as shown on Plan 15214.

H. J. KENNEY

Registrar

LEGEND: • OIP denotes an old iron pin found.
 • IP denotes an iron pin placed on this survey.



I, DONALD A. DUFFY, of the City of Prince George,
 a British Columbia Land Surveyor make oath and
 say that I was present at and did personally
 superintend the survey represent by this plan and
 that the survey and plan are correct. The said
 survey was complete on the 12th day of JULY,
 1962.

John Healey
 Owner

Approved under the Land Registry Act
 this 17th day of MAY, 1962.

Walter N. Snyder
 Witness

Robert...
 Approving Officer, Dept. of Highways

Sworn before me this 16th
 day of JULY, 1962.

B.C.L.S.

REAPPROVED:

Walter...
 APPROVING OFFICER, DEPT. OF HWYS.
 MARCH 3rd, 1966.

Walter...
 A Commissioner for taking Affidavits
 within the Province of British Columbia.

W. D. USHER & ASSOCIATES
 LAND SURVEYORS
 PRINCE GEORGE - B. C.
 Am 29 1779