

4342. 25.1

PLAN OF SUBDIVISION OF  
S. 1/2 OF S.E. 1/4 OF  
DISTRICT LOT 2425  
EXCEPT PLANS 11026, 11027, 15214  
CARIBOO DISTRICT - BRITISH COLUMBIA  
SCALE: 1" = 200'

PLAN N<sup>o</sup> 16132  
Deposited in the Land Registry  
Office at Kamloops, B.C. this  
16<sup>th</sup> day of March, 1966.

H.I. Kennedy  
Registrar

RECEIVED  
APR 14 1966  
PROVINCIAL ASSESSOR  
PRINCE GEORGE, B. C.

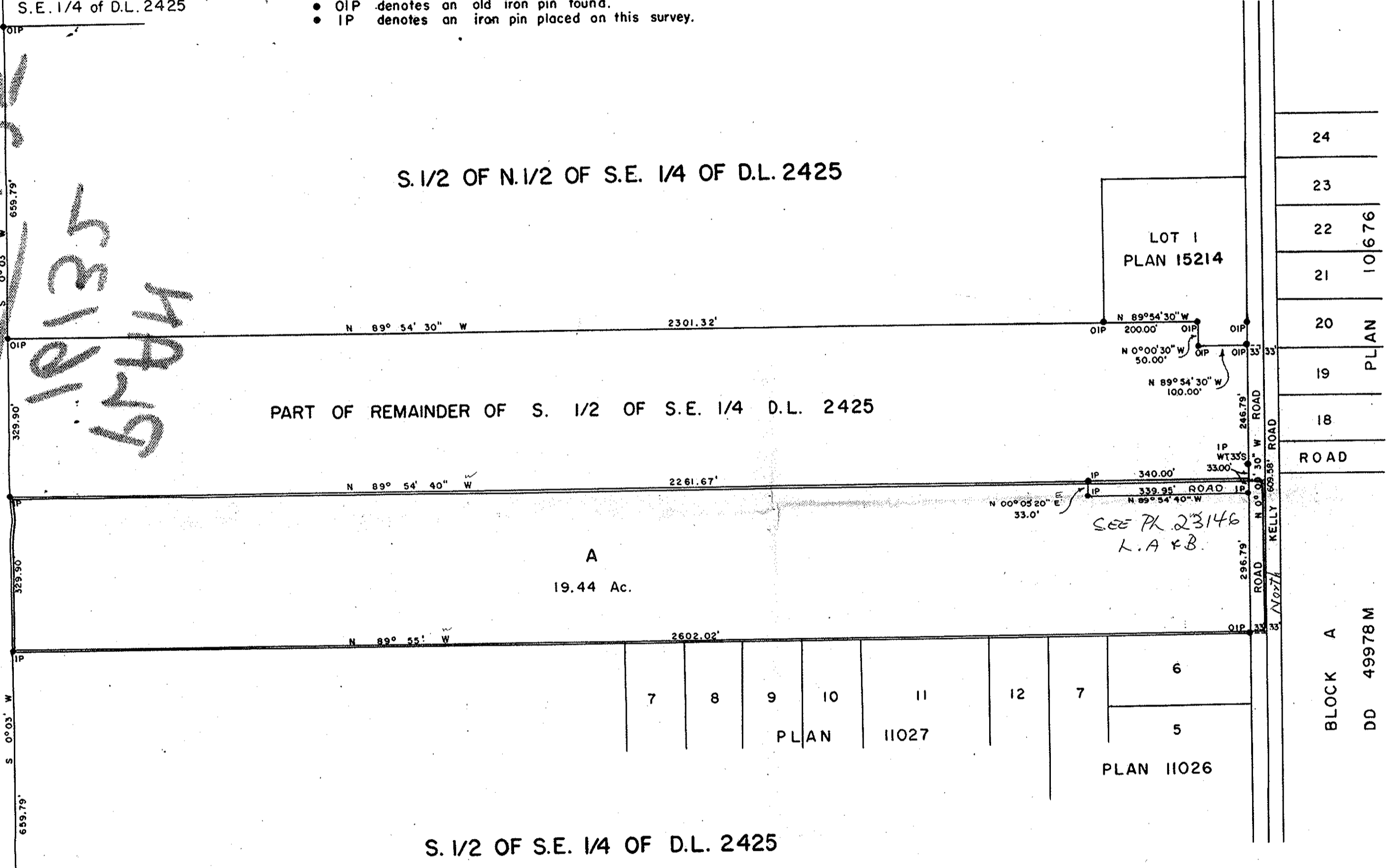
NOTE: Bearings are astronomic, derived from  
the East Boundary of D.L. 2425  
as shown on Plan 11026.

LEGEND: ● OPP denotes an old pipe post found.  
● OIP denotes an old iron pin found.  
● IP denotes an iron pin placed on this survey.

N. 1/2 of N. 1/2 of  
S.E. 1/4 of D.L. 2425

*DT 5432*  
*19135*  
*62849*

S.W. 1/4 D.L. 2425



S.W. 1/4 D.L. 2432

N.W. 1/4 D.L. 2424    N.E. 1/4 D.L. 2424

I, DONALD A. DUFFY, of the City of Prince George, a British Columbia Land Surveyor, make oath and say that I was present at and did personally superintend the survey represented by this plan and that the survey and plan are correct. The said survey was completed on the 1st day of March, 1965.

Donald A. Duffy  
B.C.L.S.

Sworn before me this  
11 day of MARCH, 1965.

W.D. Usher & Associates  
A Commissioner for taking Affidavits  
within the Province of British Columbia

L. J. Davis  
Owner

[Signature]  
Witness

Approved, under the Land Registry Act  
this 2<sup>nd</sup> day of November, 1965.

[Signature]  
Approving Officer, Dept. of Highways.

Reapproved, under the Land Registry Act  
this 3<sup>rd</sup> day of March, 1966.

[Signature]  
Approving Officer, Dept. of Highways.