

Plan of Subdivision of Part of
 District Lot 1588, Except Plan
 13954, Plan 15419 and Plan H-705,
 Cariboo District.

Scale 1" = 200'

PLAN No 16124
 Deposited in the Land Registry Office
 at Kamloops, B.C. on the 14th day of March 1966

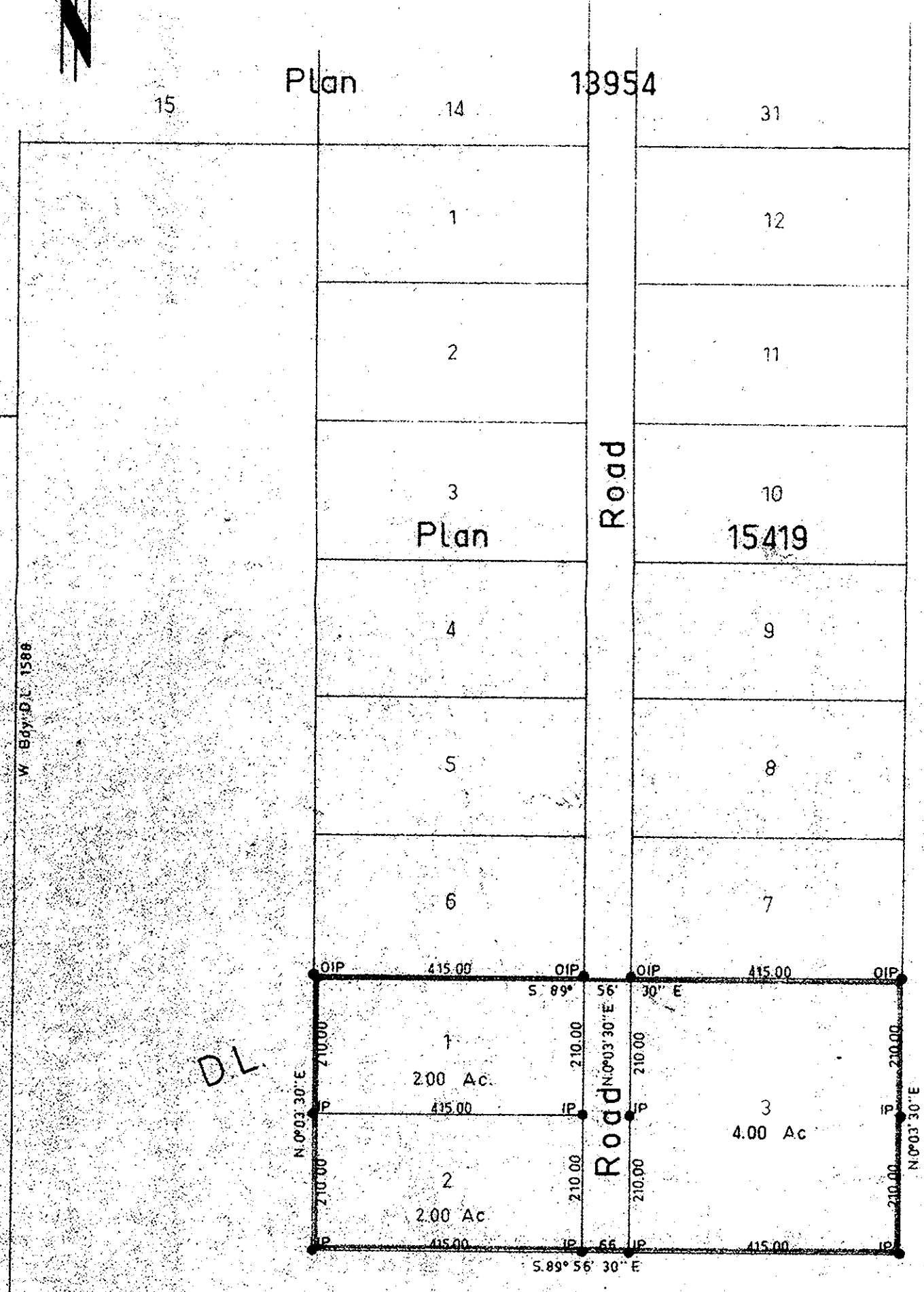
H. Kennedy
 Registrar

S.E. 1/4 D.L. 625
 Plan 9280

N.E. 1/4 D.L. 624

N.W. 1/4 D.L. 1594

S.W. 1/4 D.L. 1594



1588

- Bearings are astronomic and are derived from
 OIPs found on the S. Bdy of Plan 15419
 as S. 89° 56' 30" E.
- ⊙ P.Con. Standard Concrete Post
 - ⊙ P.Rock Standard Rock Post
 - P.P. Standard Pipe Post
 - I.P. Standard Iron Post
 - P. Wooden Post
 - L.P. Lead Plug
 - D.O. Dismantling "Old"
 - WT. Denoting "Witness"

I, R. J. Goble of the City of Prince George,
 British Columbia Land Surveyor, here both and
 say that I was present and did personally
 superintend the survey represented by this
 plan and that the survey and plan are correct.
 The said survey was completed on
 the 21st day of Oct 1965

Sworn before me on this 22nd day of October 1965

Approved under the Land Registry Act
 on the 15th day of February 1966

[Signature]
 Approving Officer
 Dept. of Highways

[Signature]
 A Commissioner for taking affidavits
 within British Columbia

Owner: *[Signature]*

Witness: *[Signature]*

McWilliam - Whyte - Serle - Goble	
B.C. Land Surveyors	
Kamloops	Prince George
Checked	Ref No 54240-P