

Plan of Subdivision of Part of
 Lots 386, 518 and 524, Plan 15185,
 District Lots 937 and 2610; and
 Lot A, Plan 15608, District Lot 937,
 Cariboo District

Scale: 1" = 100'

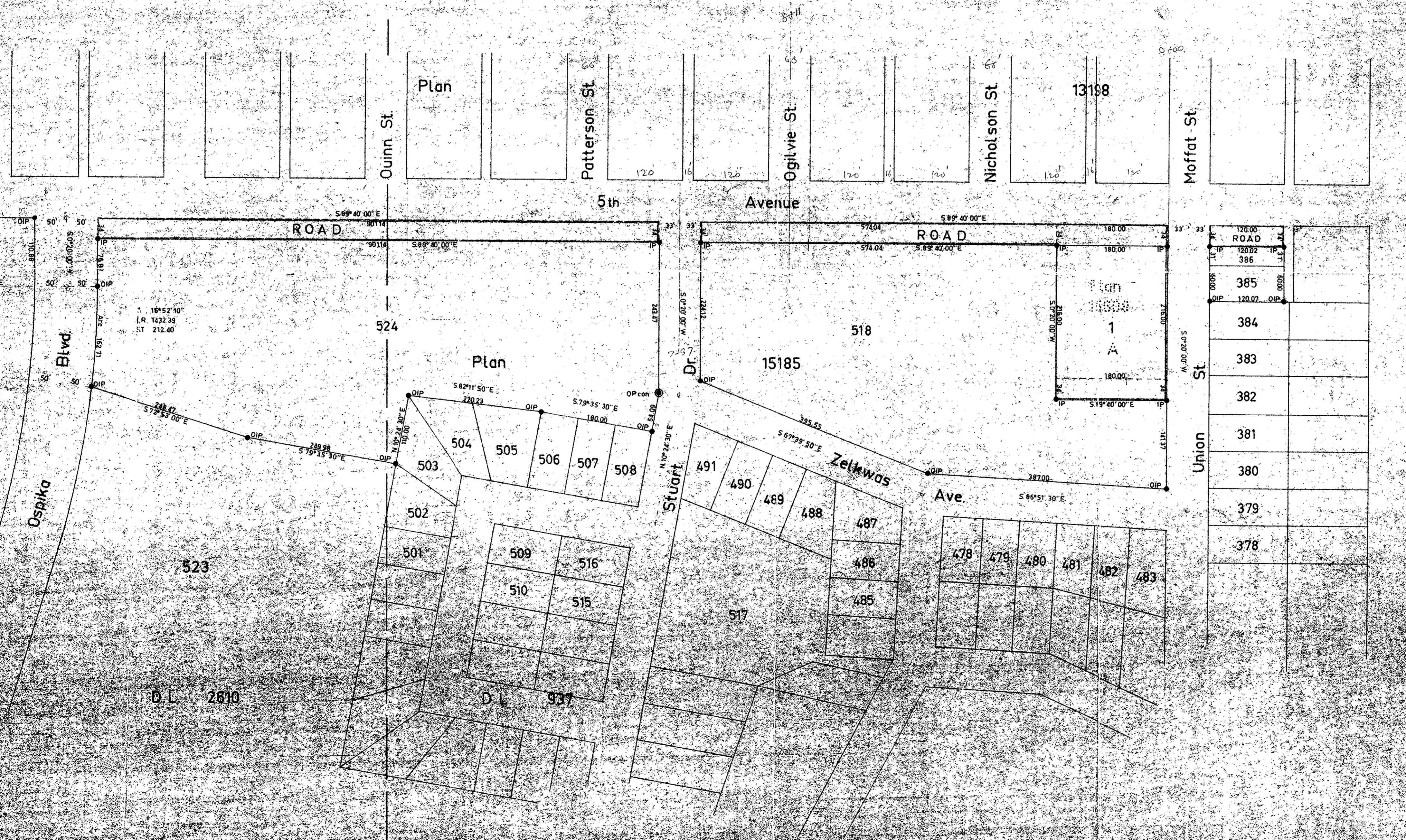
Plotted
 (AM)

PLAN 16091
 Deposited in the Land Registry Office at Kamloops, B.C.
 on the 4th day of MARCH 1966

H. Kennedy
 Registrar

RECORDS
 SECTION

LEGEND
 Bearings are astronomic and are derived from
 Plan 15185
 Old standard concrete monuments found ● OP con
 Old iron posts found ● OIP
 Iron posts set ● IP



120.00	ROAD
120.02	IP
386	IP
385	IP
120.07	OIP
384	
383	
382	
381	
380	
379	
378	

I, W.C. Sette, of the City of Prince George, British Columbia, Land Surveyor, make oath and say that I was present at and did personally superintend the survey represented by this plan and that the survey and plan are correct. The said survey was completed on the 14th day of January 1966.

W.C. Sette

Sworn before me at Prince George, B.C. this 14th day of January 1966.

[Signature]
 A Commissioner for taking affidavits within British Columbia.

Approved under the Land Registry Act this 14th day of February 1966.

[Signature]
 Approving Officer
 City of Prince George

The Seal of the Corporation of the City of Prince George was affixed hereto in the presence of

[Signature]
[Signature]
 Clerk

[Signature]
 Witness