

Plan of Subdivision of Part of  
 Lot 4, Plan 9233 Except  
 Plan 14534, Plan A-2615,

**PLAN 16086**  
 Deposited in the Land Registry Office of Kamloops, B.C.  
 on the 2<sup>nd</sup> day of March 1966.

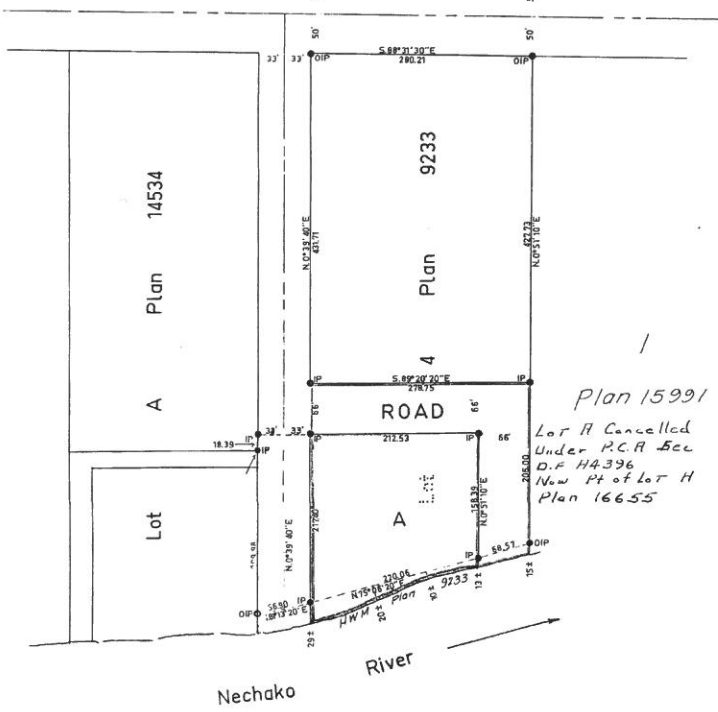
*H. H. H. H.*  
 Registrar

District Lot 823  
 Cariboo District.

Scale: T=100'

Lot 4 Plan 9233

Plan A-2615



Bearings are astronomic and are derived from  
 OP's on the East Bay of Plan 14534 as N0°39'40\"

I, B. J. Roble, ..... of the City of Prince George, .....  
 British Columbia Land Surveyor, make oath and  
 say that I was present at and did personally  
 superintend the survey represented by this  
 plan and that the survey and plan are correct.  
 The said survey was completed on  
 the 22<sup>nd</sup> day of February, 1966.

- Ccon. .... Standard Concrete Post.
- P Rock ..... Standard Rock Post.
- PP ..... Standard Pipe Post.
- LP ..... Standard Iron Post.
- W ..... Wooden Post.
- L.R. .... Lead Plug.
- O ..... Denoting "Old".
- WT. .... Denoting "Witness".

Sworn before me at Prince George,  
 this 2<sup>nd</sup> day of February 1966.

Approved under the Land Registry Act  
 on the 21<sup>st</sup> day of February 1966.

*[Signature]*  
 Approving Officer  
 Department of Highways

*[Signature]*  
 A Commissioner for taking affidavits  
 within British Columbia.

Owner A. L. H. H. H.

Witness M. D. Spelman

Plan 15991  
 Lot A Cancelled  
 Under P.C.A. Sec  
 D.F. 144396  
 New Pt of Lot H  
 Plan 16655

McWilliam - Whyte - Serie - Goble			
B.C. Land Surveyors			
Kamloops - Prince George			
Checked	f	s	x
			Ref No. 65321