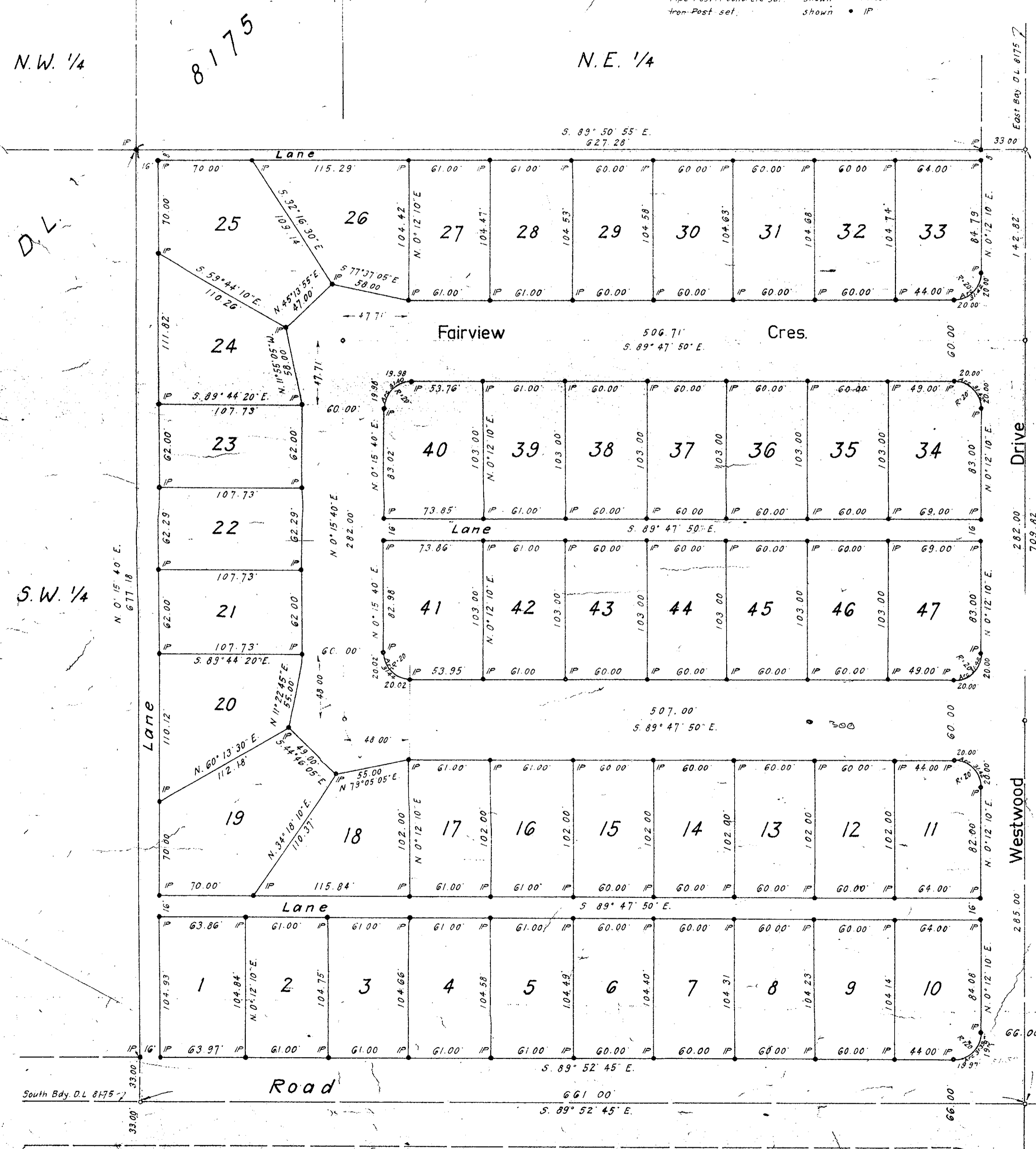


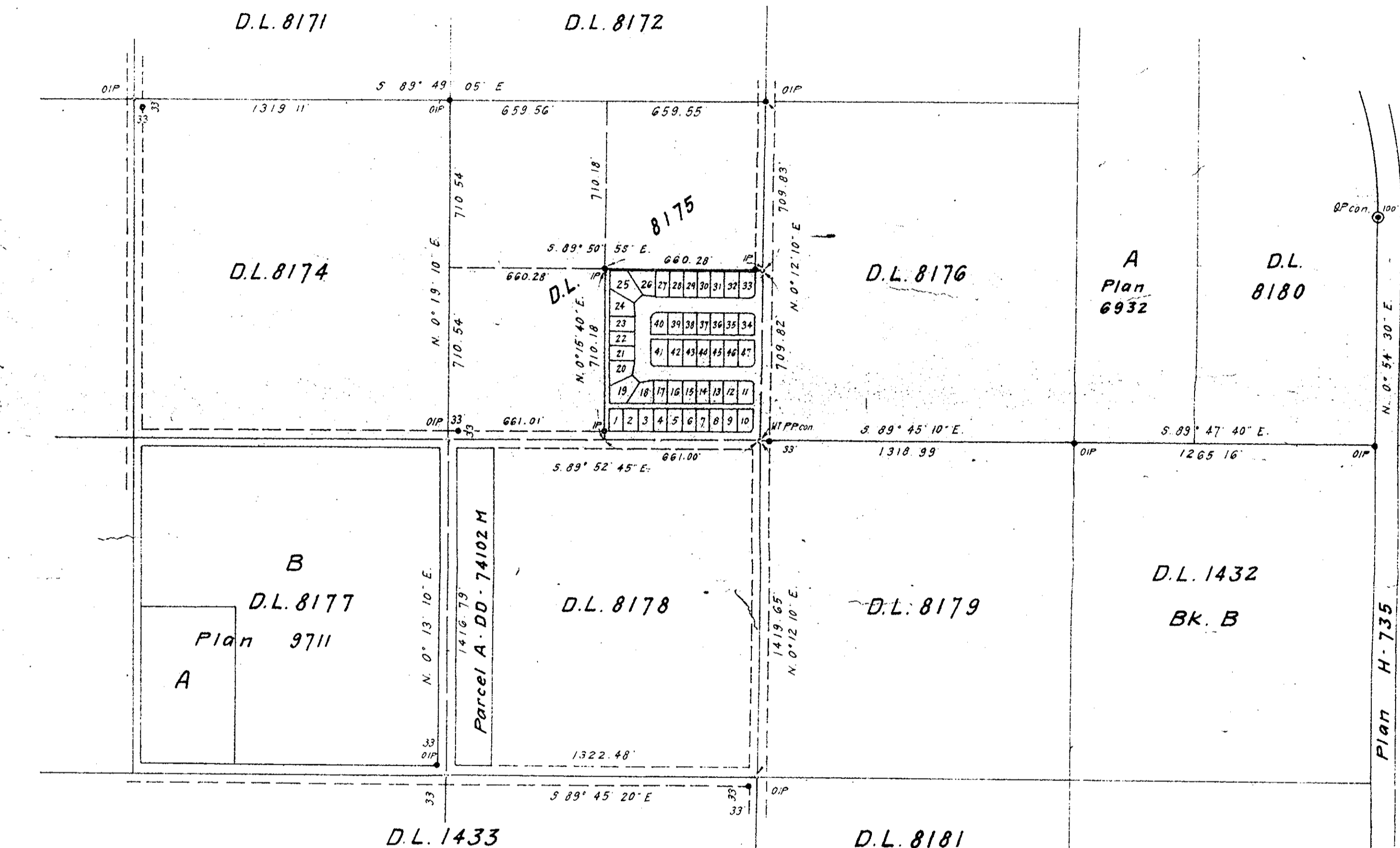
Plan of Subdivision of the S.E. 1/4 of District Lot 8175 Cariboo District Scale: 1 inch = 50 feet

Legend Bearings are astronomic and are derived from the City of Prince George Grid. Old Concrete Post found, shown as OP. Old Iron Post found, shown as IP. Pipe Post in concrete set, shown as PP. Iron Post set, shown as IP.

Pr. Geo. Grid (P.G. Proj.) Ref. 125' 0" W Long (B.C. T.M.S. 1945) East 80' 0" of D.L. 8175



D.L. 8176



Key Plan Scale: 1" = 400'

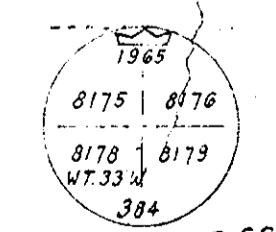
I, R. J. Goble, of the City of Prince George, British Columbia Land Surveyor, make oath and say that I was present at and did personally supervise the survey represented by this plan and that the survey and plan are correct. The said survey was completed on the _____ day of _____ 1965.

Sworn before me this _____ day of _____ 1965.

B.C.L.S.

A Commissioner for taking affidavits within British Columbia

Approved under the Land Registry Act this _____ day of _____ 19____



City of Prince George Co-Ordinates
N 105.136-39 185.156-07
E 105.350-71 115.549-87

D.L. 8179

D.L. 8178

Prince George Golf and Country Club Ltd.

President

Secretary

Approving Officer

McWilliam, Whyte, Serle & Goble
British Columbia Land Surveyors
11595-5th Ave, Prince George, B.C.

checked _____ Ref No. 65123