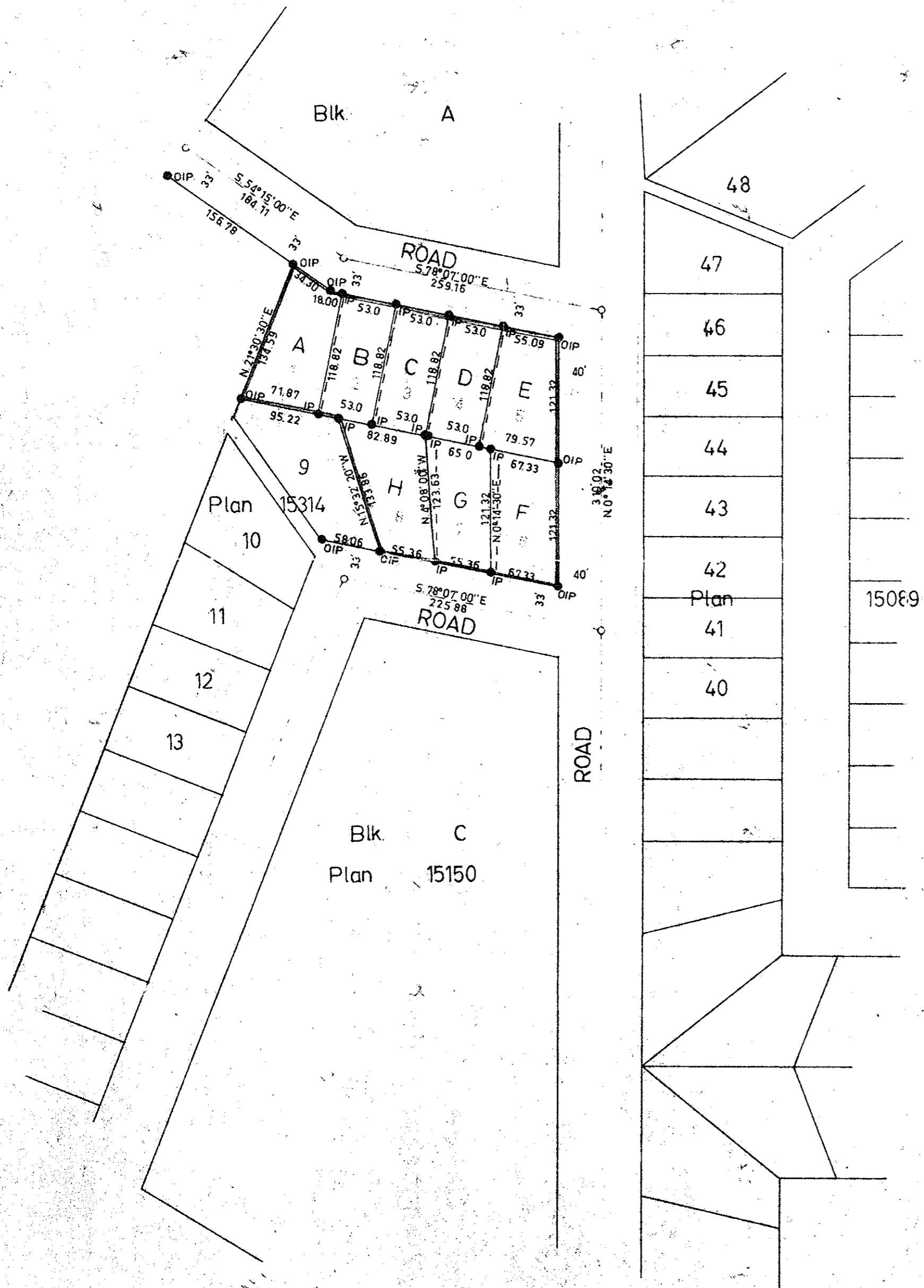


Plan of Subdivision of
Lots 1 to 8 inclusive, Plan 15314,
District Lot 1427, Cariboo District.

SCALE: 1" = 100'



PLAN No 16056
Deposited in the Land Registry Office
at Kamloops on the 23rd day of March 1966

H. Kennedy
Registrar

VENTURES SAWMILL LTD.
per: *Whittingstone*
PRESIDENT

A. J. Caine Enterprises Ltd.

A. J. Caine
President

M. S. Payne
Owner

Law Baldwin
Witness

The Seal of HIGHLAND
RESOURCES LTD.
was affixed hereto
in the presence of

Sund...
Secretary

Bearings are astronomic and are derived from
Plan 15314

- ⊙ Pcon Standard Concrete Post.
- ⊙ P Rock Standard Rock Post.
- PP Standard Pipe Post.
- IP Standard Iron Post.
- P Wooden Post.
- LP Lead Plug.
- Denoting "Old"
- WT Denoting "Witness"

I, R. J. Goble of the city of Prince George
British Columbia Land Surveyor, make oath and
say that I was present at and did personally
superintend the survey represented by this
plan and that the survey and plan are correct.
The said survey was completed on
the 1st day of Dec. 1965.

Sworn before me at PRINCE GEORGE
this 13 day of FEBRUARY 1966.

Approved under the Land Registry Act
on the 20 day of Dec. 1965

Claymes
Approving Officer
City of Prince George.

W. S. Miller
A Commissioner for taking affidavits
within British Columbia.

McWilliam, Whyte, Serle & Goble
British Columbia Land Surveyors

Checked	f	s	d	x
RG				

Ref No. 65332