

fa 0BT 3
Made BT's
8 Basal - S 8° E 27'
12 Basal - S 80° W 20'

PLAN No 16043

Deposited in the Land Registry Office
at Prince George on the 21st day of February 1966

H. J. Goble
Registrar

Plan of Subdivision of Part of the South Westerly 159.18 Acres of District Lot 4025 Cariboo District

Scale: 1 inch = 200 feet



S.E. 1/4 D.L. 2431

S.W. 1/4 D.L. 4025

1142
2460
141.50
220.50

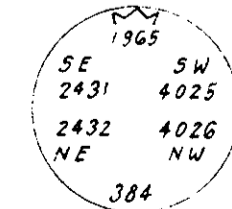
26328
100
7072

26328
882662
218950

2635.6
841.7
2480.3

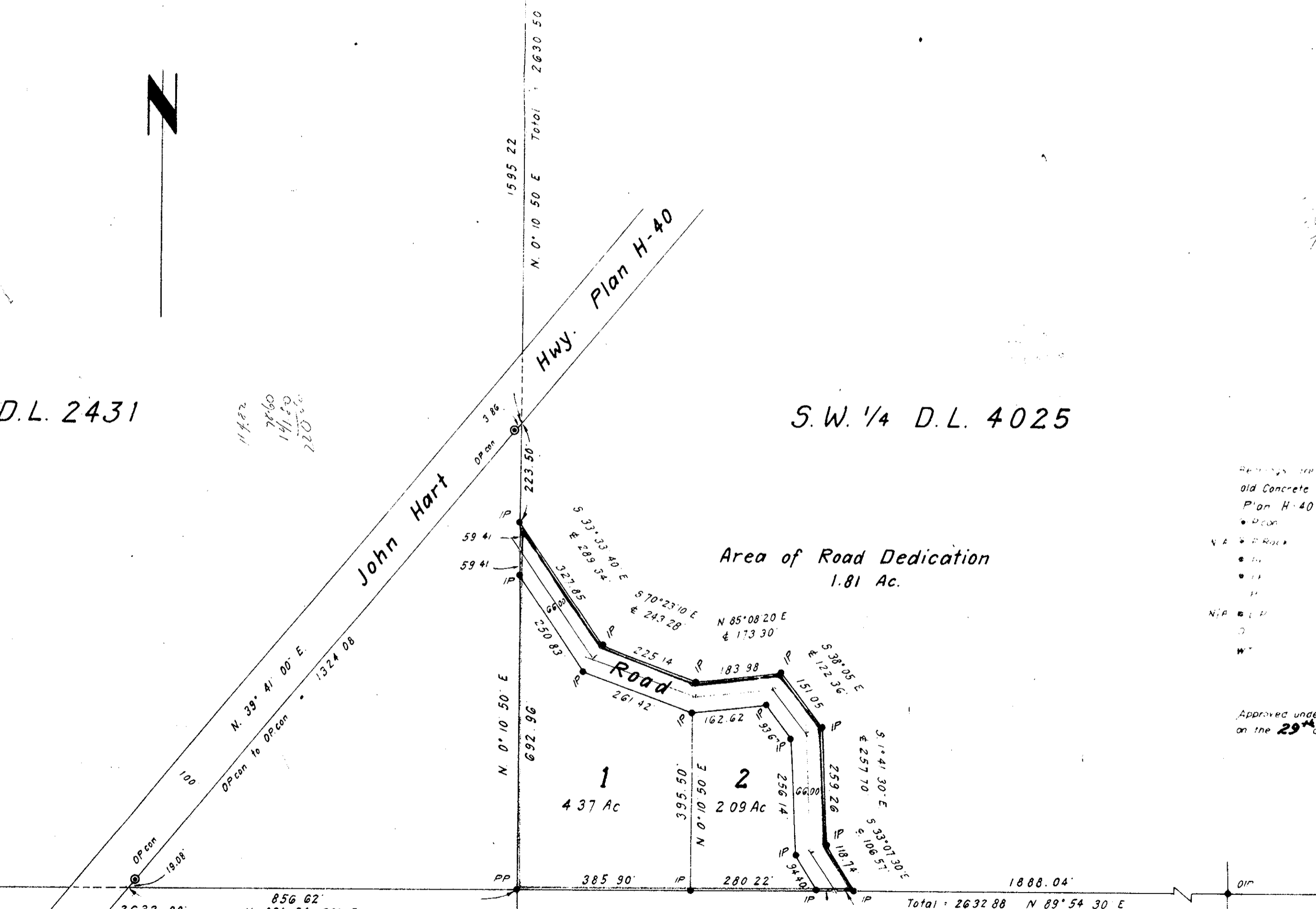
Fd. OP, Pit and Mound
Made BT's
10' Poplar N. 29° E. 13'
10' Poplar N. 79° E. 14'
10' Poplar S. 42° W. 14'

Made BT's
8 Pine N. 59° E. 1'
10' Pine N. 79° E. 16'
5' Spruce S. 19° E. 13'



N.E. 1/4 D.L. 2432

N.W. 1/4 D.L. 4026



- Beacon Standard Concrete Post
- Rock Standard Rock Post
- Pin Standard Pipe Post
- Stake Standard Iron Post
- Stake Weeder Post
- N.P. Lead Plug
- O. Cementing Pin
- W. Lending Witness

R. J. Goble of the City of Prince George
British Columbia Land Surveyor, make oath and
say that I was present at and did personally
superintend the survey represented by this
plan and that the survey and plan are correct.
The said survey was completed on
the 16th day of September, 1965.

Approved under the Land Registry Act
on the 29th day of November 1965

W. H. Wall
Approving Officer

Sworn before me at PRINCE GEORGE
this 5th day of OCTOBER, 1965

W. H. Wall
A Commissioner for taking affidavits
within British Columbia

M. H. Wall
Owner

witness *W. H. Wall*

Ref. No. 65091

McWilliam - Whyte - Serie - Goble
B. C. Land Surveyors
Kamloops - Prince George

checked	F	S	O	X
---------	---	---	---	---