

PLAN 16038

Deposited in the Land Registry Office at Kamloops, B.C.
on the 16th day of Feb. 1966.

H. Kennedy
Registrar

Plan of Subdivision of Part of District Lot 913, Cariboo District, Except Plan 7787

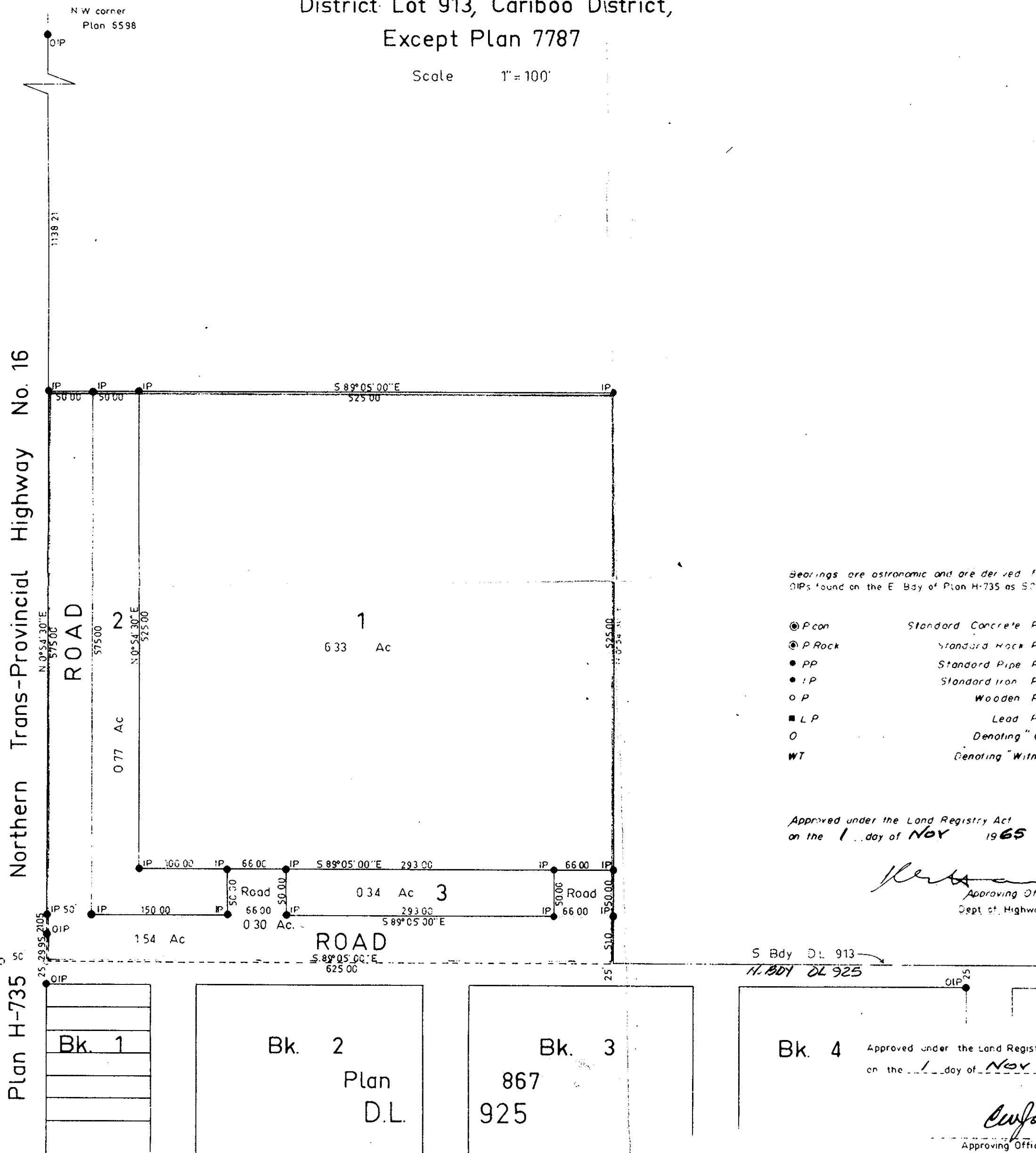
Scale 1" = 100'

I HEREBY CERTIFY THAT THIS IS A TRUE COPY
OF THE OFFICIAL PLAN ON DEPOSIT IN THE
DEPARTMENT OF LANDS, FORESTS AND WATER
RESOURCES AND NUMBERED II TUBE 782

[Signature]

SURVEYOR GENERAL, VICTORIA B.C.
FEB. 8 1966.

D.L. 8180
Plan B 3608



Bearings are astronomic and are derived from
OIPs found on the E. Bay of Plan H-735 as S 0°54'30" W

- ⊙ Pcon Standard Concrete Post
- ⊙ P Rock Standard Rock Post
- PP Standard Pipe Post
- IP Standard Iron Post
- P Wooden Post
- LP Lead Plug
- Denoting "Old"
- WT Denoting "Witness"

R. Goble of the City of Prince George,
British Columbia Land Surveyor, make oath and
say that he was present at and did personally
superintend the survey represented by this
plan and that the survey and plan are correct

The said survey was completed on
the 12th day of Oct. 1965

Sworn before me at PRINCE GEORGE
this 4th day of Nov. 1965

Approved under the Land Registry Act
on the 1st day of Nov. 1965

[Signature]
Approving Officer
Dept. of Highways

[Signature]
A commissioner for taking affidavits
within British Columbia

S Bdy D.L. 913
H. Bdy D.L. 925

Bk. 4 Approved under the Land Registry Act
on the 1st day of Nov. 1965

[Signature]
Approving Officer
City of Prince George

McWilliam — Whyte — Serie — Goble
B.C. Land Surveyors
Kamloops — Prince George

Checked f s d x Ref No 65249