

# Plan of Subdivision of Part of District Lot 4340, Except Plan A-98: All in Cariboo District.

Scale: 1 inch = 100 feet

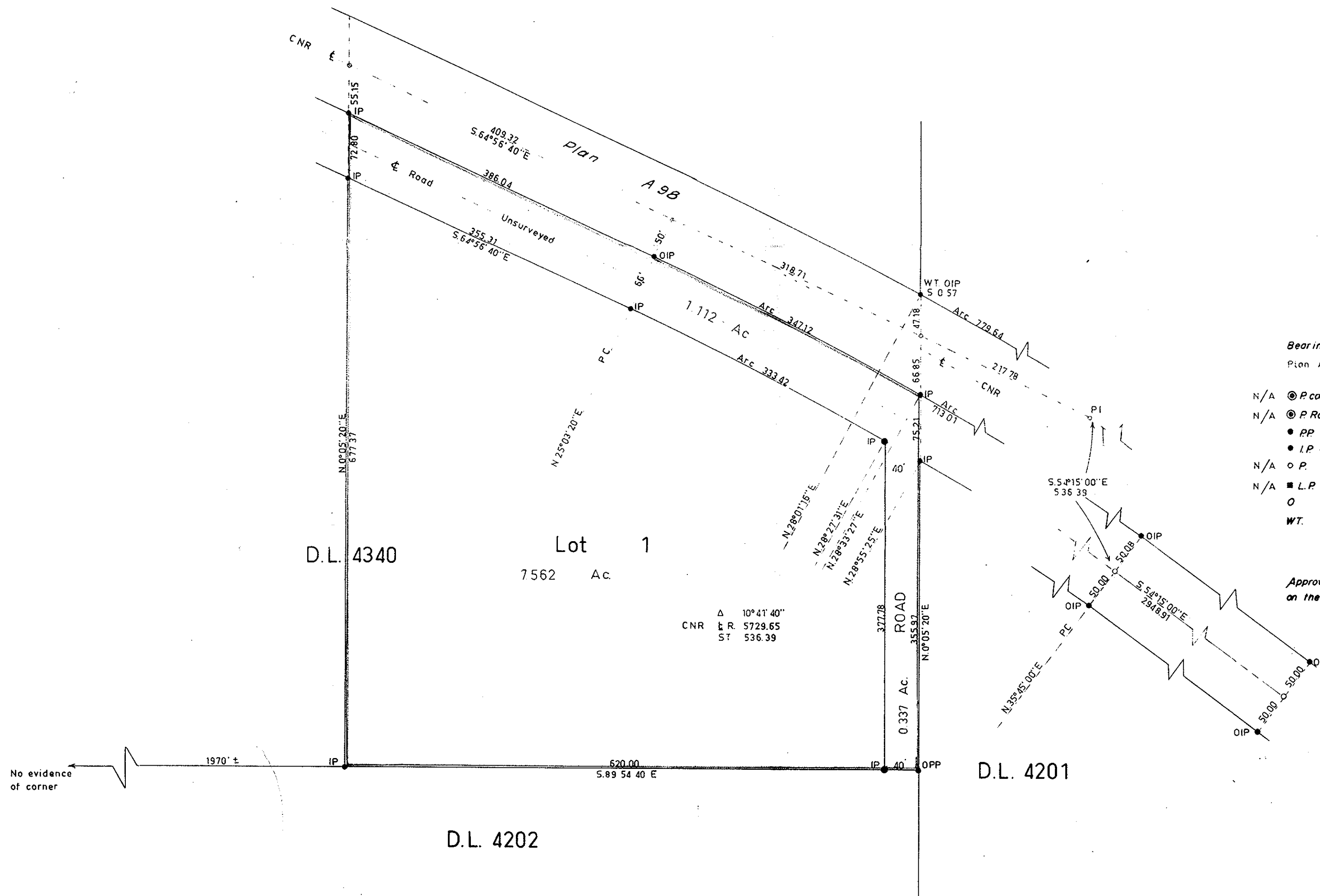
PLAN No 16023

Deposited in the Land Registry Office at Kamloops on the 15th day of FEBRUARY 1966.

H. T. KENNEDY Registrar

*Handwritten:* APPROVED FOR REGISTRATION

**RECEIVED**  
FEB 21 1966  
PROVINCIAL ASSESSOR  
PRINCE GEORGE, B. C.



- Bearings are astronomic and are derived from Plan A-98 & RR
- N/A ● P.con. Standard Concrete Post.
  - N/A ● P.Rock Standard Rock Post.
  - PP Standard Pipe Post.
  - IP Standard Iron Post.
  - N/A ○ P. Wooden Post.
  - N/A ■ L.P. Lead Plug.
  - Denoting "Old"
  - WT. Denoting "Witness"

I, W.C. Serle, of the City of Prince George, British Columbia Land Surveyor, make oath and say that I was present at and did personally superintend the survey represented by this plan and that the survey and plan are correct. The said survey was completed on the 11th day of June, 1965.

*W.C. Serle*

Sworn before me at Prince George, B.C. this 14th day of June, 1965.

*Commissioner*  
A Commissioner for taking affidavits within British Columbia.

Approved under the Land Registry Act on the 22nd day of December, 1965.

*Approving Officer*

I hereby certify that this is a true copy of the Official Plan on deposit in the Department of Lands, Forests and Water Resources and numbered 1 Tube 761.

*Surveyor General*  
Victoria B.C. 20 July, 1965.

McWilliam - Whyte - Serle - Goble			
B.C. Land Surveyors			
Kamloops - Prince George			
Checked	f	s	d x
Ref. No. 65051			