

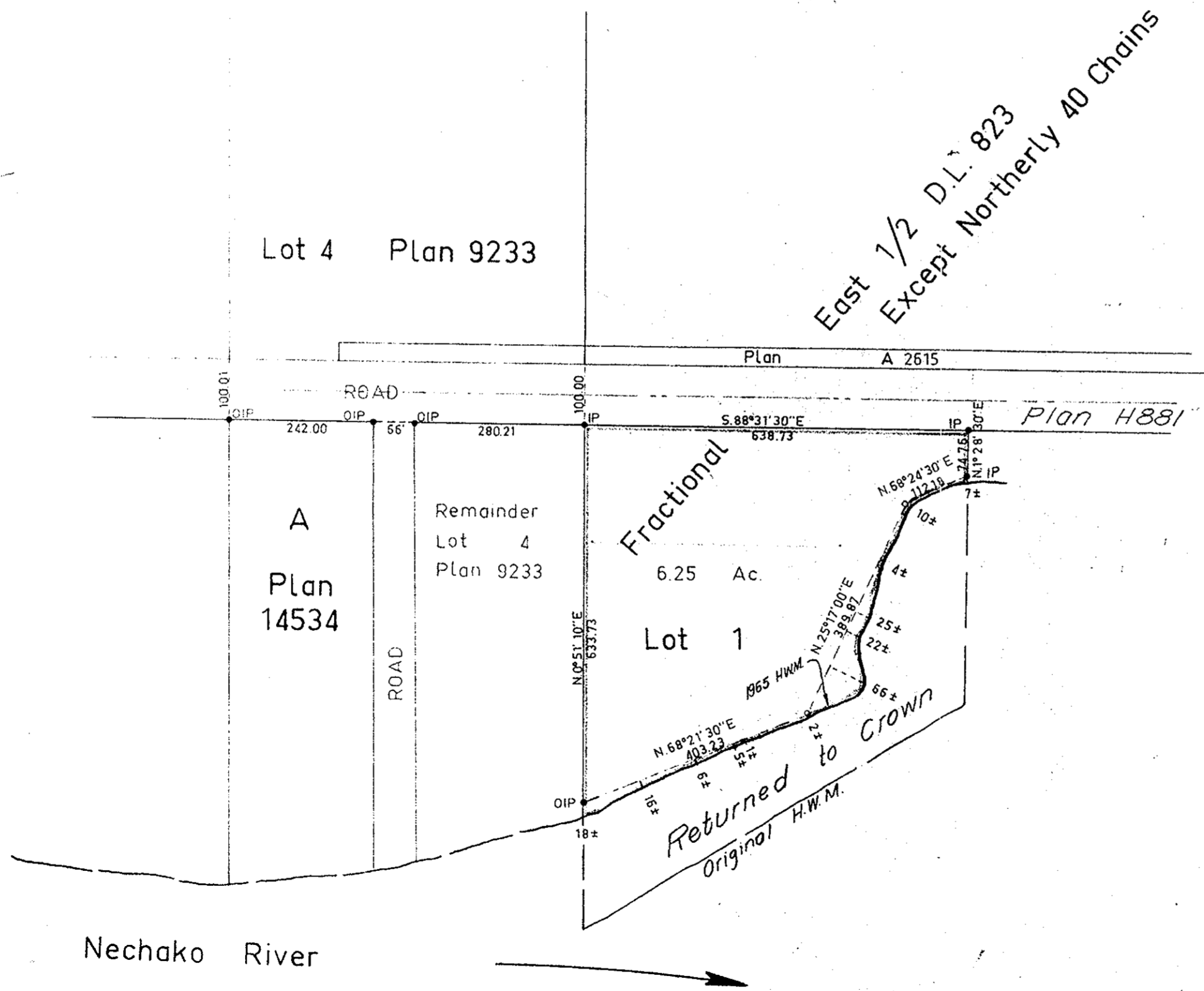
PLAN 15991

Deposited in the Land Registry Office at Kamloops, B.C.
 on the 4th day of February 1966

H. Kennedy
 Registrar

Plan of Subdivision of Part of
 Fractional East 1/2 of District
 Lot 823, Except Northerly 40
 Chains: Cariboo District.

Scale: 1 inch = 200 feet



East 1/2 D.L. 823
 Except Northerly 40 Chains

Bearings are astronomic and are derived from
 Plan 9233

- P.C.M. Standard Concrete Post.
- ⊙ P.Rock Standard Rock Post.
- P.P. Standard Pipe Post.
- I.P. Standard Iron Post.
- P. Wooden Post.
- L.P. Lead Plug.
- Denoting "Old"
- WT. Denoting "Witness"

I, R.J. Goble of the city of Prince George,
 British Columbia Land Surveyor, make oath and
 say that I was present at and did personally
 superintend the survey represented by this
 plan and that the survey and plan are correct.

The said survey was completed on
 the 9th day of JUNE 1965

R.J. Goble

Sworn before me at PRINCE GEORGE
 this 23rd day of JULY 1965

Approved under the Land Registry Act
 on the 20th day of January 1966

Herta
 Approving Officer

W. S. Goble
 A commissioner for taking affidavits
 within British Columbia.

Owner Ernest Rack

Witness *J. Hawel*

Owner Ernest Rack

Witness *J. Hawel*
 26 February 1966

McWilliam - Whyte - Serle - Goble
 B.C. Land Surveyors
 Kamloops - Prince George

Checked	f	s	d	x
Ref. No. 65056				