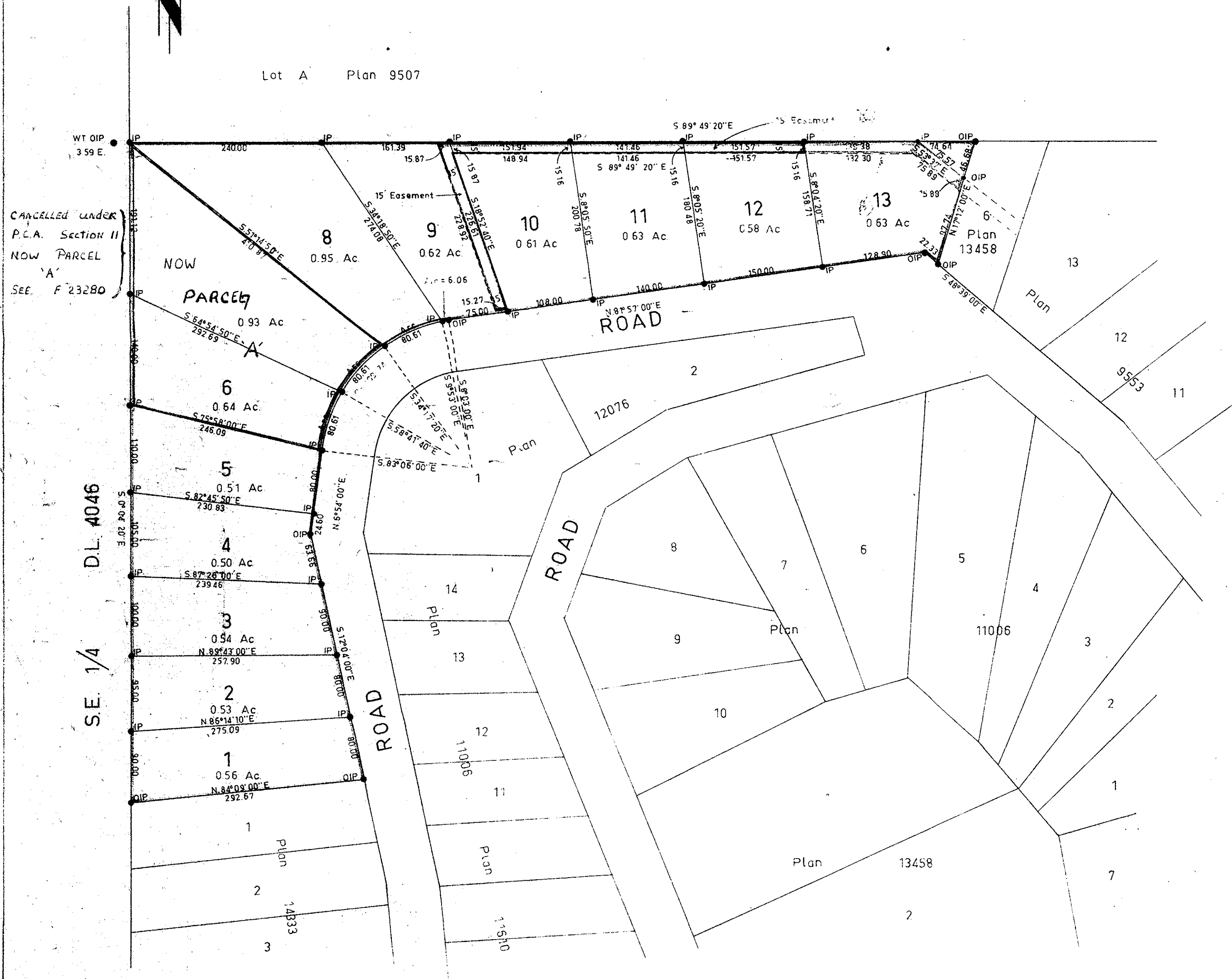


Plan of Subdivision of Lot 6,
Plan 13991, Except Plan 14333,
District Lot 4039, Cariboo District.

Scale 1 inch = 100 feet

PLAN No 15979
Deposited in the Land Registry Office
at Prince George on the 1st day of Feb 1965

H. H. Kennedy
Registrar



CANCELLED UNDER
P.C.A. Section 11
NOW PARCELS
'A'
SEE F 23280

SE. 1/4 DL 4046

Bearings are astronomic and are derived from
OIPs on N Bdy Plan 13991 as S 89° 45' 20" E

⊙ Pcon	Standard Concrete Post
⊙ P Rock	Standard Rock Post
● PP	Standard Pipe Post
● IP	Standard Iron Post
○ P	Wooden Post
■ LP	Lead Plug
○	Denoting "Old"
WT	Denoting "Witness"

I, W.C. Serle of the City of Prince George,
British Columbia Land Surveyor, make oath and
say that I was present at and did personally
superintend the survey represented by this
plan and that the survey and plan are correct.
The said survey was completed on
the 26th day of July 1965

W.C. Serle

Sworn before me at PRINCE GEORGE
this 14th day of Oct. 1965

Approved under the Land Registry Act
on the 20th day of December 1965

W. H. ...
Approving Officer
Dept. of Highways

A Commissioner for taking of Oaths
within British Columbia

Owner *Isabella A. ...*

Witness *J. ...*

McWilliam	Whyte	Serle	Goble
B.C. Land Surveyors			
Kamloops Prince George			
Checked	f	s	d
			Ref. No. 65158