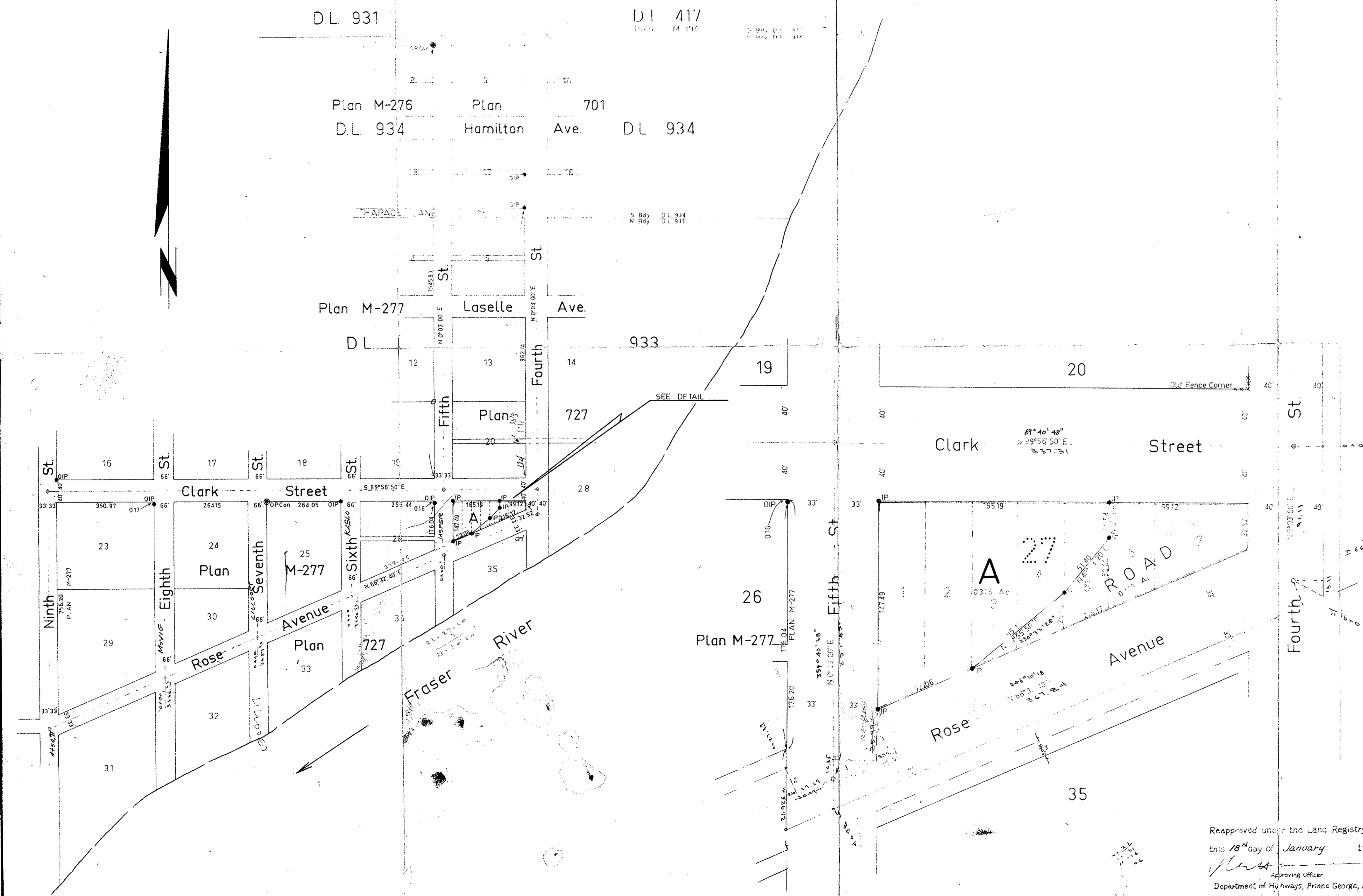


Plan of Subdivision of Lots 1 to 7 inclusive,  
Block 27, Plan 727, District Lot 933,  
Cariboo District  
Scale: 1 inch = 40 feet

PLAN 15976  
Registered in the Land Registry Office at Kamloops, B.C.  
on the 31<sup>st</sup> day of JAN 1966.

*Sup. Registrar*  
Registrar

KEY PLAN  
Scale: 1" = 200'



LEGEND  
Bearings are astronomic and are derived from  
OIPs and OPCon found on S. Bdy. of Clark St  
as S 89°55'57" E. as shown on Repeating Plan M-277  
Old concrete posts found shown ● OIP Con  
Old iron posts found shown ○ OIP  
High posts set shown ○ IP

I, R. J. Goble, of City of Prince George,  
British Columbia Land Surveyor, make oath and  
say that I was present at and did personally  
superintend the survey represented by this  
plan and that the survey and plan are correct.  
The said survey was completed on  
the 6<sup>th</sup> day of October 1965

*R. J. Goble*  
R. J. Goble, B.C.L.S.

Sworn before me at Prince George, B.C.  
this 7<sup>th</sup> day of October 1965

*Commissioner*  
A Commissioner for Taking Affidavits  
with British Columbia

Approved under the Land Registry Act  
on the 3<sup>rd</sup> day of Nov. 1965

*Approving Officer*  
Approving Officer, Dept. of Highways

*Owner*  
Owner

*Edith Luff*  
Witness

Reapproved under the Land Registry Act  
this 18<sup>th</sup> day of January 1966  
*Approving Officer*  
Approving Officer  
Department of Highways, Prince George, B.C.

McWilliam, Whyte, Serie & Goble  
British Columbia Land Surveyors  
Checked  f  s  d  x  
Ref. No. 65198