

PLOTTED (KN)

PLAN 15974

Deposited in the Land Registry Office at Kamloops, B.C.
on the 28th day of JANUARY 1966

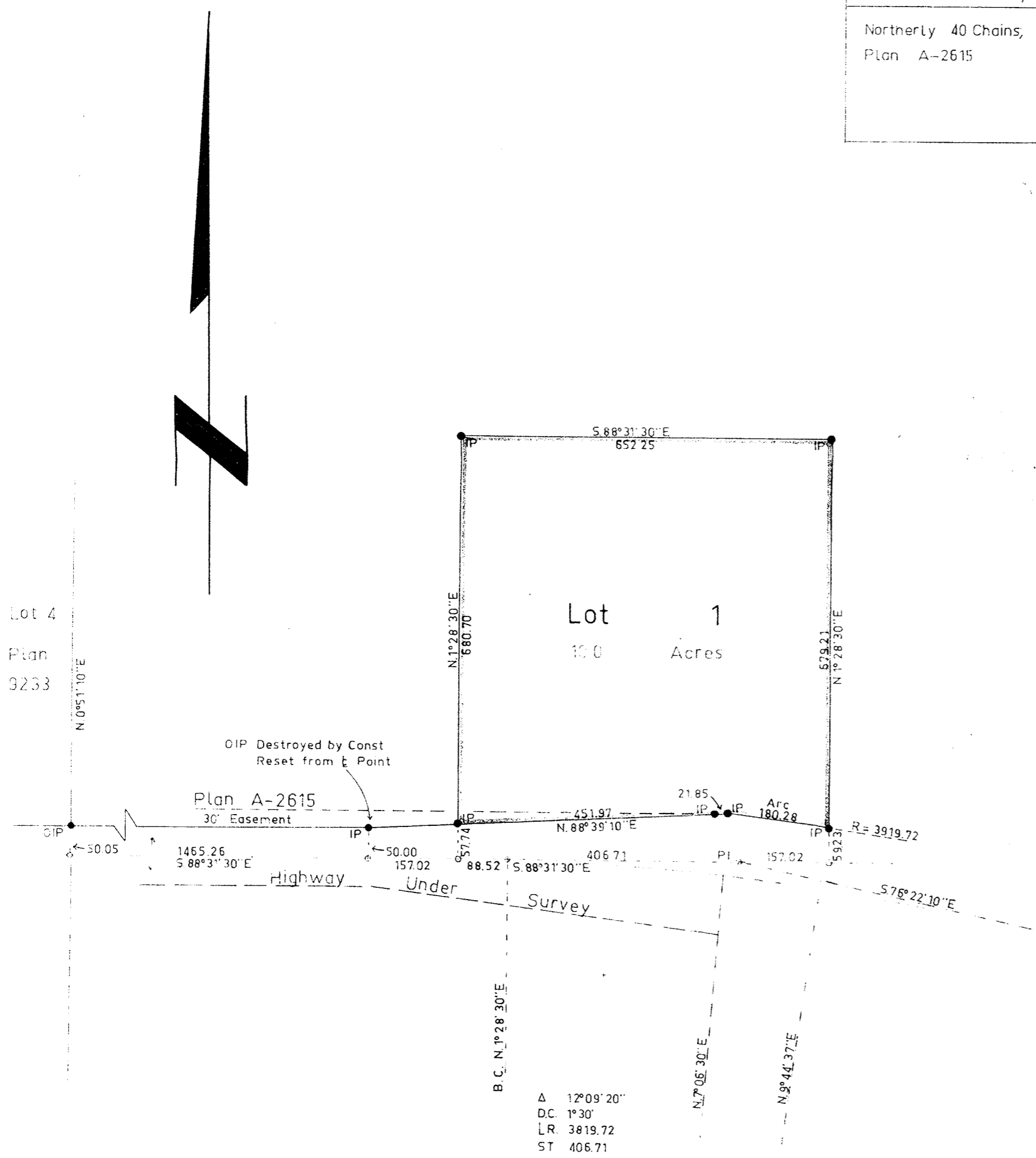
Plan of Subdivision of Part of
the Fractional East 1/2 of
District Lot 823.

Cariboo District

Scale: 1 inch = 200 feet

[Signature]
Registrar

Exceptions to Frac. E. 1/2 D.L. 823
Northerly 40 Chains,
Plan A-2615



Bearings are astronomic and are derived from
South Bdy. Plan A-2615 as "S. 88° 31' 30" E"

- P.con. ----- Standard Concrete Post.
- P. Rock ----- Standard Rock Post.
- P.P. ----- Standard Pipe Post.
- I.P. ----- Standard Iron Post.
- P. ----- Wooden Post.
- L.P. ----- Lead Plug.
- ----- Denoting "Old"
- WT. ----- Denoting "Witness"

I, R. J. Gable, of the city of Prince George,
British Columbia Land Surveyor, make oath and
say that I was present at and did personally
superintend the survey represented by this
plan and that the survey and plan are correct.
The said survey was completed on
the 15th day of June 1965.

Sworn before me at PRINCE GEORGE
this 23rd day of July 1965.

Approved under the Land Registry Act
on the 22nd day of December 1965.

[Signature]
Approving Officer
Department of Highways

[Signature]
A commissioner for taking affidavits
within British Columbia.

Owner Ernest Rack
Witness *[Signature]*

McWilliam - Whyte - Serle - Gob				
B.C. Land Surveyors				
Kamloops - Prince George.				
Checked	f	s	d	x
				Ref. No. 65126