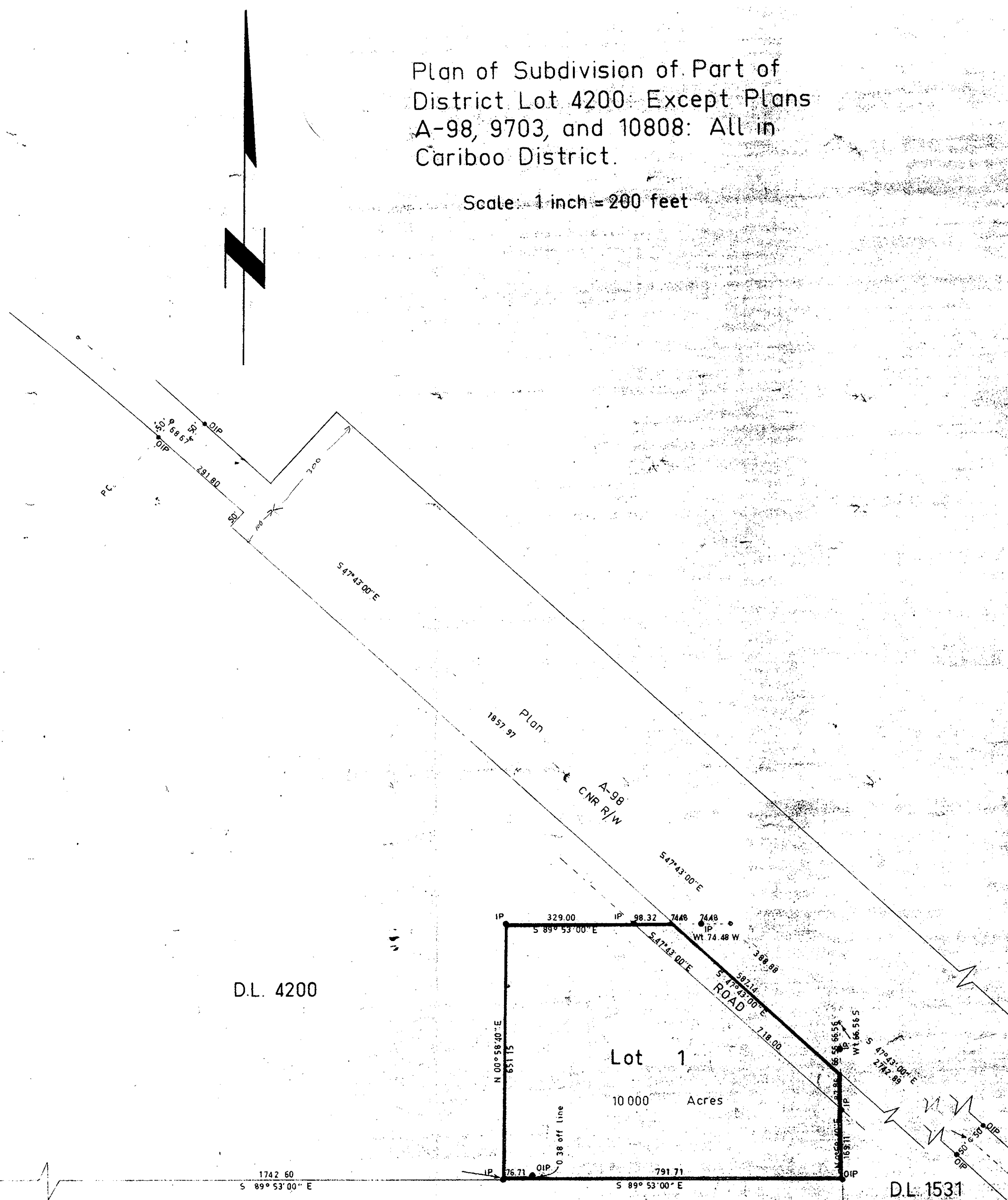


PLAN No 15865
 Deposited in the Land Registry Office
 at Kamloops B.C. on the 3 day of Jan. 1966.

H. Kennedy
 Registrar

Plan of Subdivision of Part of
 District Lot 4200 Except Plans
 A-98, 9703, and 10808: All in
 Cariboo District.

Scale: 1 inch = 200 feet



- Bearings are astronomic and are derived from
 Plan A-98 as & RR S 47°43'00\" E
- P.con. Standard Concrete Post.
 - ⊙ P.Rock Standard Rock Post.
 - P.P. Standard Pipe Post.
 - I.P. Standard Iron Post.
 - P. Wooden Post.
 - L.P. Lead Plug.
 - Denoting "Old"
 - WT. Denoting "Witness"

I, W.C. Serle, of the City of Prince George,
 British Columbia, Land Surveyor, major and
 say that I was present at and did personally
 superintend the survey represented by this
 plan and that the survey and plan are correct.
 The said survey was completed on
 the 11 day of June 1965

W.C. Serle

Sworn before me at PRINCE GEORGE B.C.
 this 14th day of June 1965

Approved under the Land Registry Act
 on the 14th day of September 1965

Hessman
 Approving Officer
 Dept. of Highways

A commissioner for taking affidavits
 within British Columbia
 LADON CONTRAIRE INC. DEVELOPMENT CO. LTD.
 Owner *Roy*

Re-approved under the Land Registry Act
 on the 14th day of December 1965

Hessman
 Approving Officer
 Dept. of Highways

Witness

D.L. 4200

Lot 1
 10 000 Acres

D.L. 1531

D.L. 6881

S.W. Corn 4200
 FD OWP
 IP

McWilliam Whyte Serle Goble
 B.C. Land Surveyors
 Kamloops - Prince George

Checked	f	s	d	x
---------	---	---	---	---

Ref No. 65018