

PLAN OF SUBDIVISION OF
PART OF N.W. 1/4
DISTRICT LOT 4041
EXCEPT PLAN 14790
CARIBOO DISTRICT - BRITISH COLUMBIA

PLAN N° **15755**

Deposited in the Land Registry
Office at Kamloops, B.C. this 3
day of Dec, 1965:

SCALE: 1" = 200'

NOTE Bearings are astronomic, derived from the
East boundary of the N.W. 1/4 of D.L. 4041,
as shown on Plan 14790.

LEGEND ● OIP denotes an old iron pin found.
● OPP denotes an old pipe post found.
● IP denotes an iron pin placed on this survey.

[Signature]
Registrar

LOT 2 - PLAN 11926
D.L. 4039

S.W. 1/4 D.L. 4038

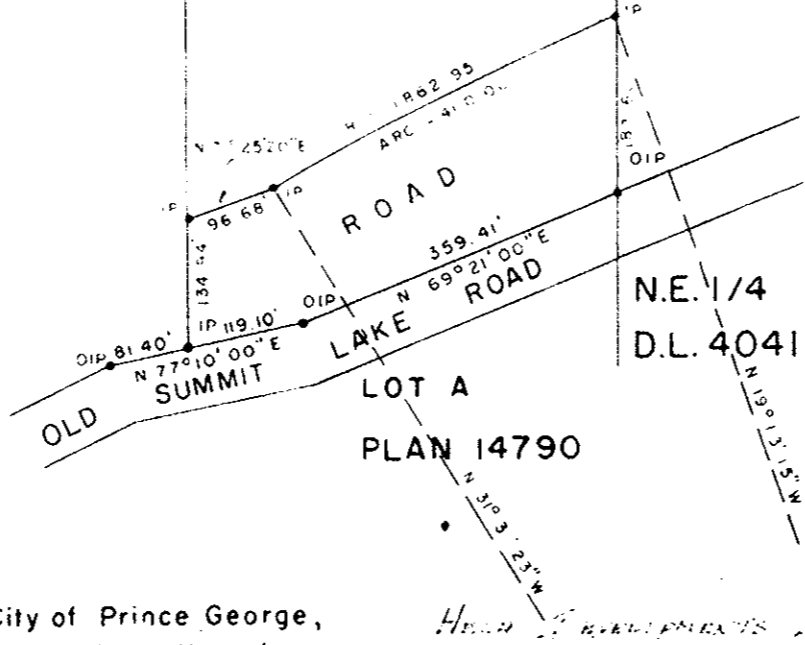
N.W. 1/4 D.L. 4041

NE. 1/4
D.L. 4041

LOT 1
13.26 AC.

LOT 1
PLAN 10275

N.E. 1/4 D.L. 4041



I, DONALD A. DUFFY, of the City of Prince George,
a British Columbia Land Surveyor, make oath and say
that I was present at and did personally superintend
the survey represented by this plan and that the survey
and plan are correct. The said survey was completed
on the 13th day of September, 1965.

[Signature]
Owner
PRESIDENT

Approved under the Land Registry Act
this 14 day of October, 1965.

[Signature]
B.C.L.S.

[Signature]
Witness

[Signature]
Approving Officer, Dept. of Highways.

Sworn before me this 15TH
day of OCTOBER, 1965.

[Signature]
A Commissioner for taking Affidavits
within the Province of British Columbia.

WD. USHER & ASSOCIATES
LAND SURVEYORS
PRINCE GEORGE - B.C.
1712 AF 43-45