

Plan of Subdivision of Part of  
 Lot A, Plan 6932, District Lot 8180,  
 Cariboo District

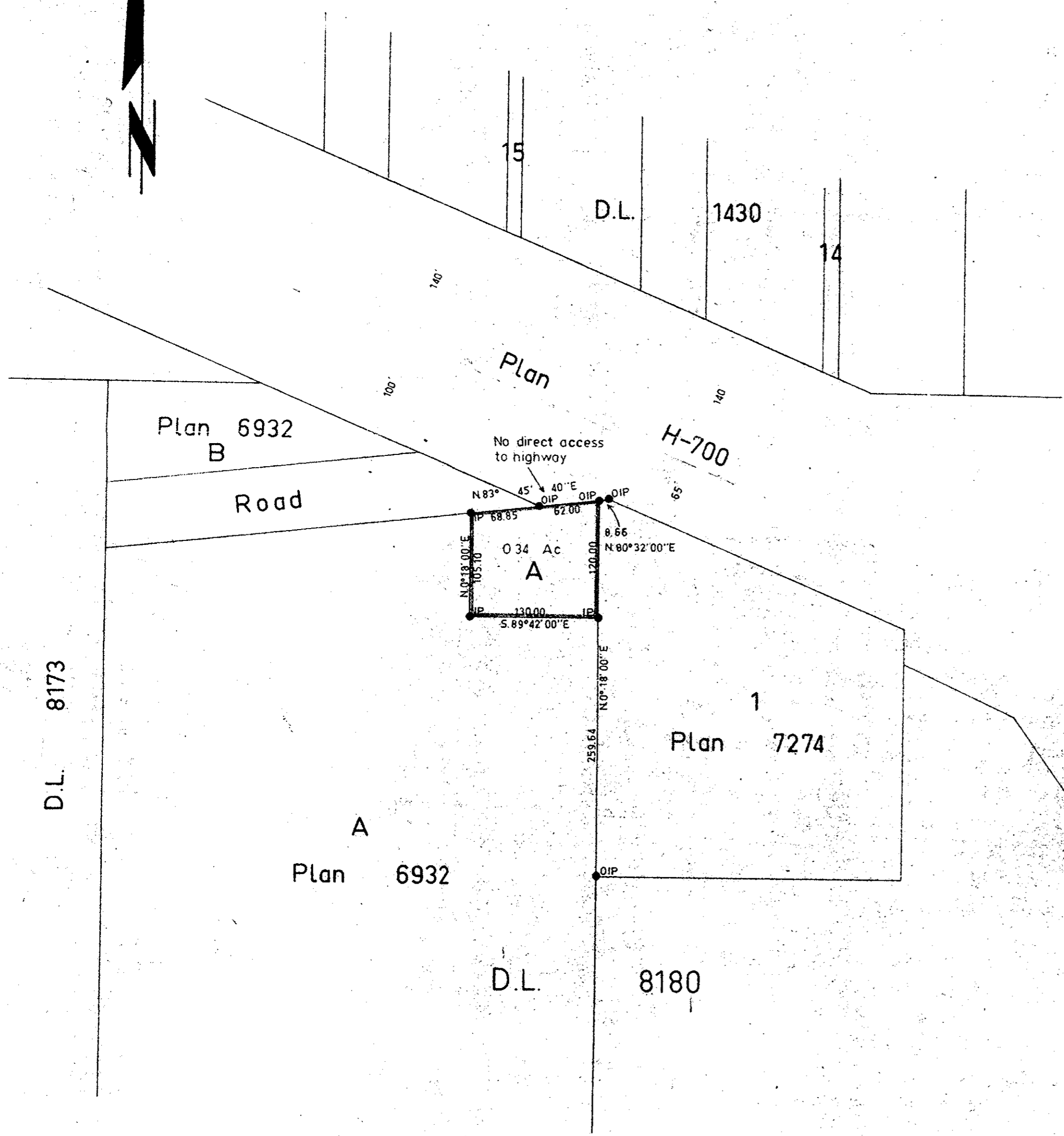
Scale: 1" = 100'

Plan No. 15750

Deposited in the Land Registry Office at Kamloops, B.C.  
 on the 2<sup>nd</sup> day of Dec. 1965.

Registered *[Signature]*

RECORDS  
SECTION



Bearings are astronomic and are derived from  
 OIPs found on the W Bdy of Plan 7274 as N 0° 18' 00\"/>

- ⊙ Pcon Standard Concrete Post
- ⊙ P Rock Standard Rock Post
- PP Standard Pipe Post
- IP Standard Iron Post
- P Wooden Post
- LP Lead Plug
- Denoting "Old"
- WT Denoting "Witness"

Provided no direct access  
 to Bypass Hwy (Plan H-700)  
 Approved under the Land Registry Act  
 on the 2<sup>nd</sup> day of November 1965.

*[Signature]*  
 Approving Officer  
 Dept. of Highways

Approved under the Land Registry Act  
 on the 2<sup>nd</sup> day of Nov. 1965.

*[Signature]*  
 Approving Officer  
 City of Prince George

R. J. Goble of the City of Prince George,  
 British Columbia Land Surveyor, make oath and  
 say that I was present at and did personally  
 superintend the survey represented by this  
 plan and that the survey and plan are correct.  
 The said survey was completed on  
 the 14<sup>th</sup> day of Oct. 1965.

Sworn before me at Prince George, B.C.  
 this 22<sup>nd</sup> day of October 1965.

*[Signature]*  
 A Commissioner for taking affidavits  
 within British Columbia

The Seal of Prince George Golf and  
 Country Club Ltd.  
 was affixed hereto in  
 the presence of

*[Signature]* President  
*[Signature]* Secretary

McWilliam - Whyte - Serle - Goble			
B.C. Land Surveyors			
Kamloops		Prince George	
Checked	f	s	d
			Ref No. 65213