

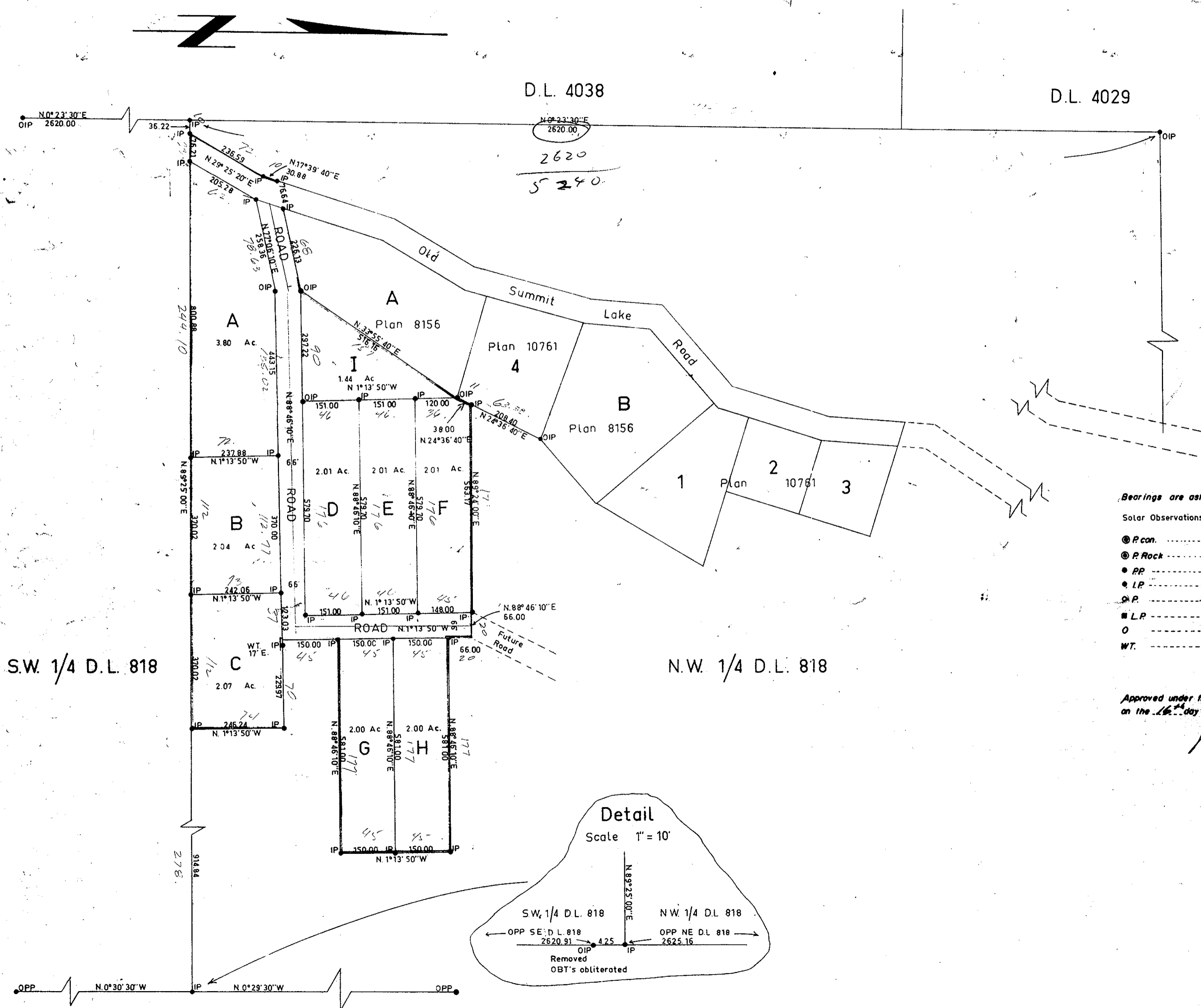
Plotted (KS)

Plan of Subdivision of Part of N.W. 1/4 District Lot 818, Except Plans 10761 and 8156. Cariboo District.

Scale: 1 inch = 200 feet

PLAN No 15707
Deposited in the Land Registry Office
at Kamloops on the 26th day of Nov. 1965

H. H. H. H.
Registrar



- Bearings are astronomic and are derived from Solar Observations
- P.con. Standard Concrete Post.
 - ⊙ P.Rock Standard Rock Post.
 - P.P. Standard Pipe Post.
 - I.P. Standard Iron Post.
 - ⊙ P.P. Wooden Post.
 - L.P. Lead Plug.
 - O Denoting "Old"
 - WT. Denoting "Witness"

I, R. J. Goble, of the City of Prince George, British Columbia Land Surveyor, do hereby say that I was present at and did personally superintend the survey represented by this plan and that the survey and plan are correct. The said survey was completed on the 23rd day of July, 1965.

Sworn before me at Prince George, B.C. this 23rd day of July, 1965.

Approved under the Land Registry Act on the 16th day of September, 1965.

[Signature]
Approving Officer
Dept. of Highways

[Signature]
A Commissioner for taking affidavits within British Columbia.

Owner *[Signature]*

Witness *[Signature]*

McWilliam	Whyte	Serie	Goble
B.C. Land Surveyors			
Kamloops - Prince George			
Checked	✓	✓	✓
10/2/66	11/1/65	11/1/65	11/1/65
Ref. No. 15707			