

PLAN OF SUBDIVISION OF PART OF
N. W. 1/4 DISTRICT LOT 2425
 EXCEPT PLANS 13794 & 14674
 CARIBOO DISTRICT - BRITISH COLUMBIA
 SCALE: 1" = 200'

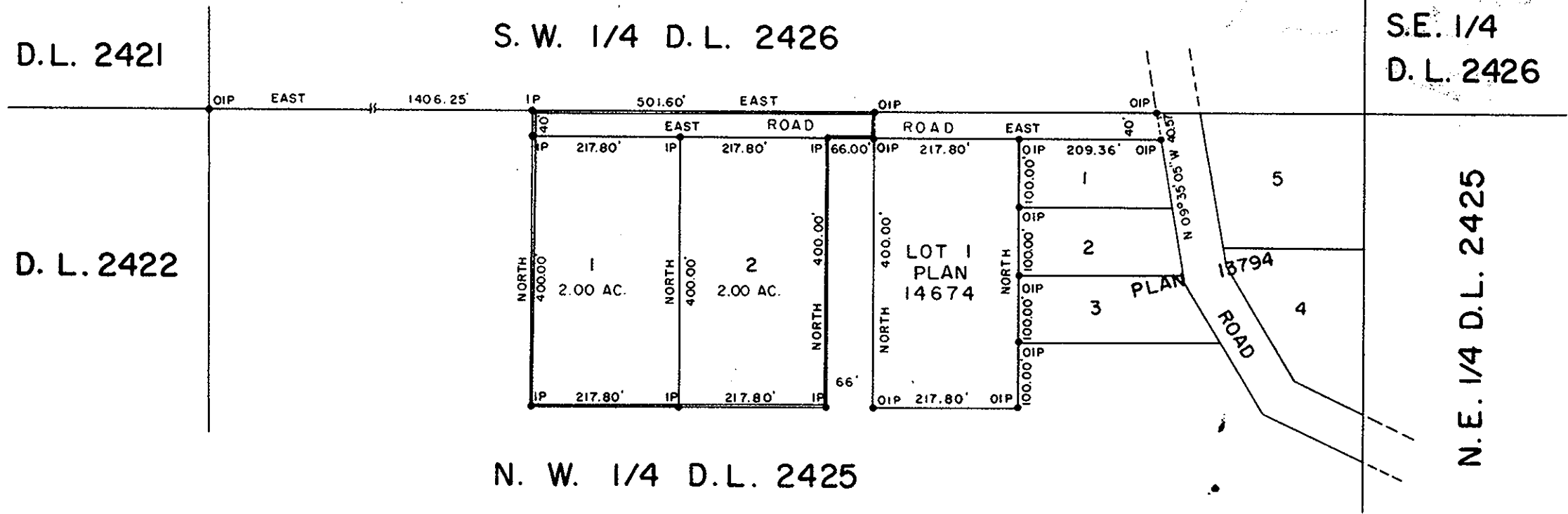
PLAN No 15638
 Deposited in the Land Registry
 Office at Kamloops B.C. this
 2nd day of Dec., 1965.

A. A. Milledge
 Registrar

NOTE: Bearings are astronomic, derived from the north boundary of N.E. 1/4 D.L. 2425 as shown on Plan 13794

LEGEND: ● OIP denotes an old iron pin found.
 ● IP denotes an iron pin placed on this survey.

RECEIVED
 DEC 23 1965
 PROVINCIAL ASSESSOR
 PRINCE GEORGE, B. C.



I, DONALD A. DUFFY of the City of Prince George, a British Columbia Land Surveyor, make oath and say that I was present at and did personally superintend the survey represented by this plan and that the survey and plan are correct. The said survey was completed on the 25th day of September, 1964.

Donald A. Duffy
 B.C.L.S.

Sworn before me this 8TH day of October, 1964.

W. D. Usher
 A Commissioner for taking Affidavits within the Province of British Columbia.

E. Anderson
 Owner

S. J. Pilhofer
 Witness

Mrs Anne Anderson
 Owner

S. J. Pilhofer
 Witness

Approved under the Land Registry Act this 14TH day of September, 1965.

W. D. Usher
 Approving Officer, Dept. of Highways.

W. D. USHER & ASSOCIATES
 LAND SURVEYORS
 PRINCE GEORGE - B. C.
 AC-14 1490