

PLAN No 15627  
 DEPOSITED IN THE LAND REGISTRY OFFICE  
 AT KAMLOOPS THIS 18  
 DAY OF Nov 1965

"A.A. McHedye"  
 REGISTRAR

PLAN OF SUBDIVISION OF THAT PART OF  
 THE W 1/2 OF DISTRICT LOT 7645, LYING  
 TO THE WEST OF THE HART HIGHWAY, AS  
 SHOWN ON PLAN H-226, CARIBOO DISTRICT.

LEGEND: BEARINGS ARE ASTRONOMIC AND ARE DERIVED FROM OLD POSTS ON  
 JOHN HART HIGHWAY, AS SHOWN S. 23° 26' 50" E. ON PLAN H 226.

- OLD PIPE POSTS FOUND SHOWN THUS . . . . . @ . . . . . OPP.
- OLD IRON POSTS FOUND SHOWN THUS . . . . . • . . . . . OIP
- OLD WOODEN POSTS FOUND SHOWN THUS . . . . . ◦ . . . . . OWP
- IRON POSTS SET SHOWN THUS . . . . . • . . . . . IP.
- WOODEN POSTS SET SHOWN THUS . . . . . ◦ . . . . . WP.

SCALE: 1 INCH = 200 FEET

APPROVED UNDER THE LAND REGISTRY ACT, ON THE 18<sup>th</sup> DAY OF AUG. 1964

*[Signature]*  
 APPROVING OFFICER DEPT. OF HIGHWAYS, VICTORIA.

OWNER *[Signature]*

WITNESS *[Signature]*

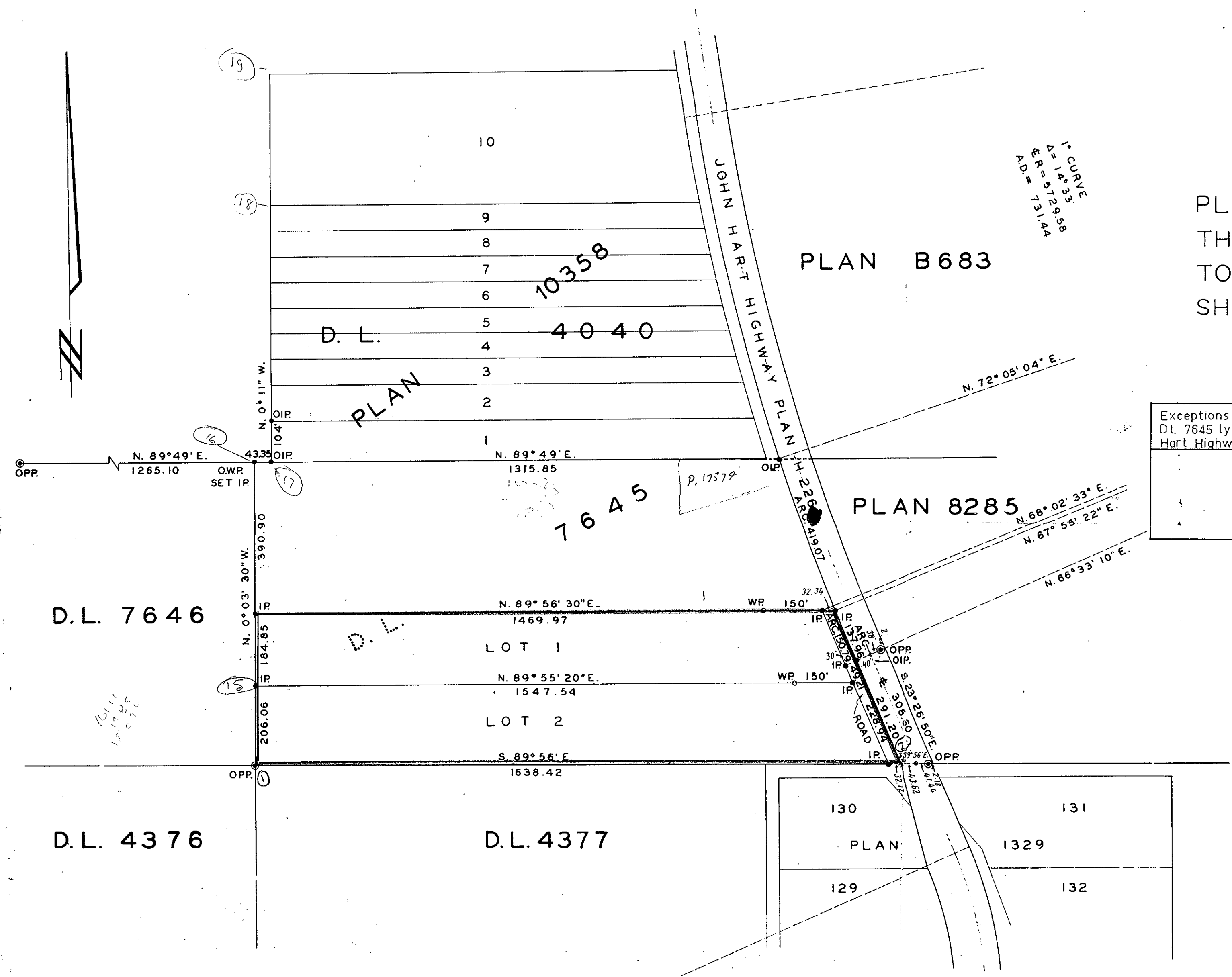
I, R.J. GOBLE OF THE CITY OF PRINCE GEORGE, BRITISH COLUMBIA LAND  
 SURVEYOR MAKE OATH AND SAY THAT I WAS PRESENT AT AND DID  
 PERSONALLY SUPERINTEND THE SURVEY REPRESENTED BY THIS PLAN,  
 AND THAT THE SURVEY AND PLAN ARE CORRECT. THE SAID  
 SURVEY WAS COMPLETED ON THE 9<sup>th</sup> DAY OF JUNE 1958.

*[Signature]*  
 B.C.L.S.

SWORN BEFORE ME AT THE CITY OF PRINCE GEORGE  
 THIS 18<sup>th</sup> DAY OF Nov 1965

*[Signature]*  
 A COMMISSIONER FOR TAKING  
 AFFIDAVITS WITHIN BRITISH COLUMBIA

REF. No 58052



1" CURVE  
 Δ = 1433.3  
 R = 5729.58  
 Δ D. = 714.14

Exceptions to that Part of  
 D.L. 7645 lying W of the  
 Hart Highway

D.L. 7646

D.L. 4376

D.L. 4377

PLAN B 683

PLAN 8285

130  
 PLAN 1329  
 129  
 131  
 132