

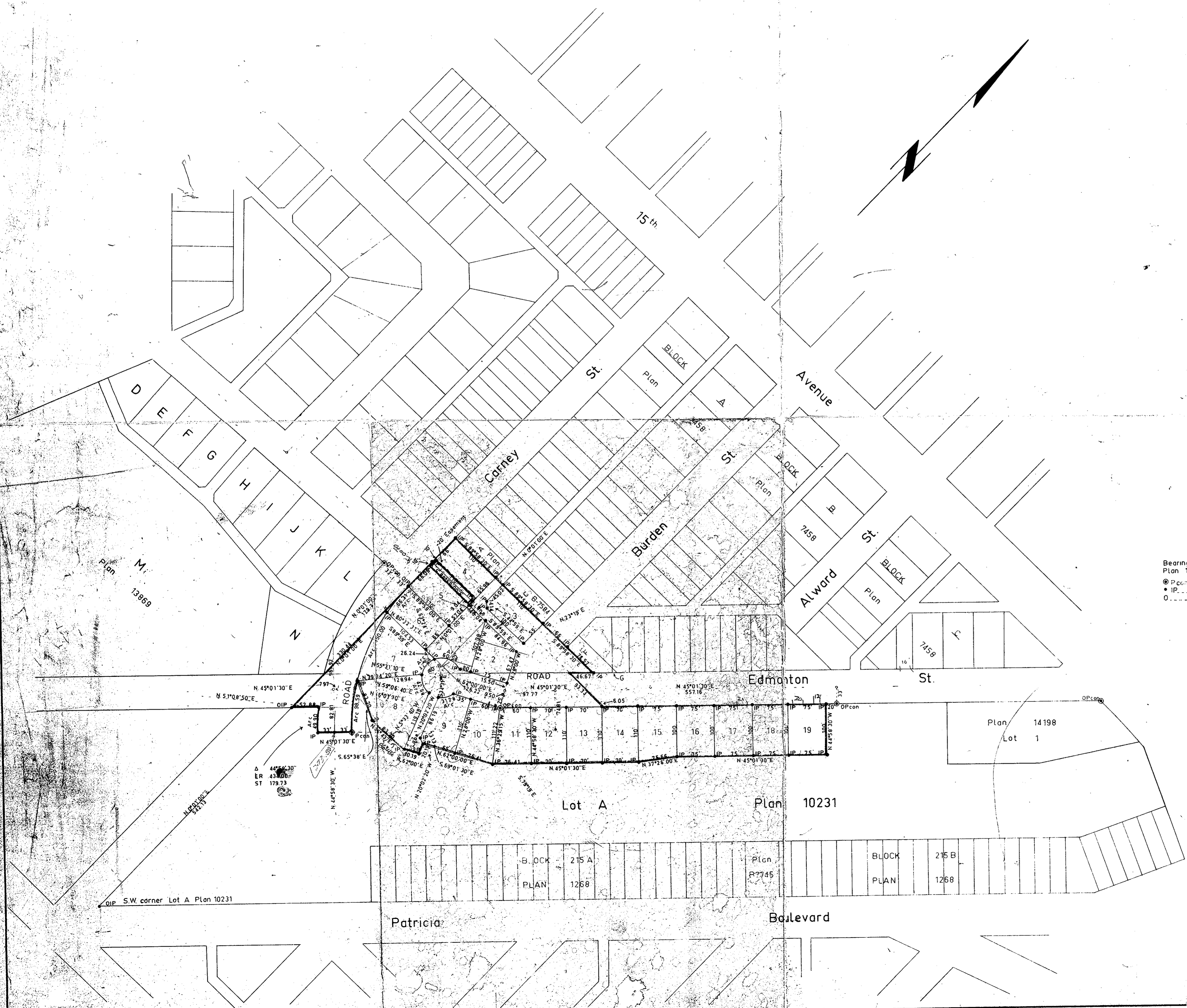
Plan of Subdivision of  
 Lots B, D and E, Plan 10231  
 and Part of Lot A, Plan 10231  
 except Plan 14198: all in  
 District Lot 343, Cariboo District.

Plan No 15624  
 Deposited in the Land Registry Office at Kamloops, B.C.  
 on the 18 day of Nov 1965

*R. Blumley*  
 Registrar

Scale 1 inch = 100 feet

RECORDS  
 SECTION



LEGEND  
 Bearings are astronomic and are derived from  
 Plan 1268 as N 45° 01' 30" E  
 • PC... standard concrete post  
 • IP... standard iron post  
 O... denoting old

I, R. J. Goble of the city of Prince George  
 British Columbia Land Surveyor, make oath  
 and say that I was present at and did  
 personally superintend the survey  
 represented by this plan and that the  
 survey and plan are correct.  
 The said survey was completed on  
 the 18 day of May 1965

Approved under the Land Registry Act  
 on the 12 day of July 1965

*C. Jones*  
 Approving Officer  
 City of Prince George, B.C.

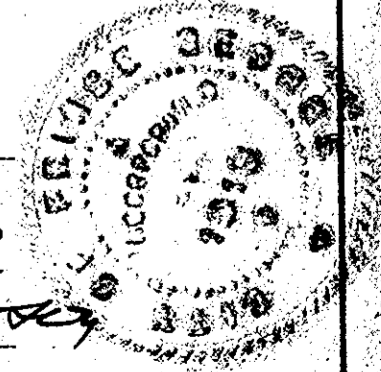
Sworn before me at Prince George  
 this 9 day of June 1966

*[Signature]*  
 A commissioner for taking affidavits  
 within British Columbia

The Seal of the Corporation  
 of the City of Prince George  
 was affixed hereto  
 in the presence of

*Jan Egell*  
 MAYOR

*Quax Howard*  
 CLERK



McWilliam, Whyte, Serle & Goble  
 British Columbia Land Surveyors  
 Checked [ ] [ ] [ ] [ ] [ ] [ ] [ ] [ ] [ ] [ ]  
 Ref. No 65100-15