

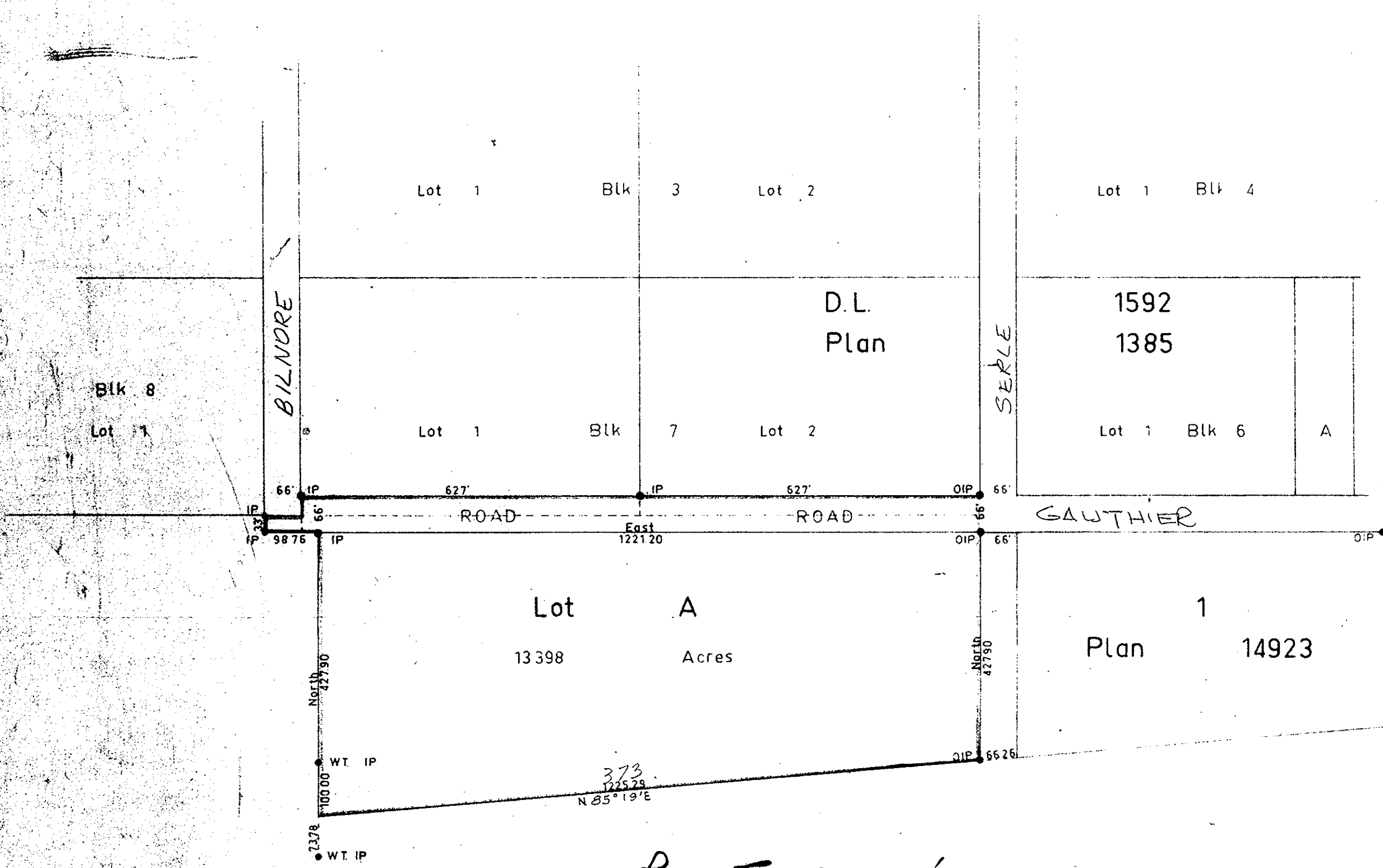
Plan of Subdivision of Part of North 1/2 of District Lot 1571 Cariboo District

Scale 1 inch = 200 feet

PLAN No 155 90
Deposited in the Land Registry Office at Kamloops on the 1 day of Nov 19 65

Alvin King
Registrar

Exceptions to N1/2 DL 1571	
Plan	14923



Bearings are astronomic and are derived from Plan 1385

- N/A ● P.con. Standard Concrete Post.
- N/A ● P.Rock Standard Rock Post.
- N/A ● P.P Standard Pipe Post.
- N/A ● I.P Standard Iron Post.
- N/A ● W.P Wooden Post.
- N/A ● L.P Lead Plug.
- O Denoting "Old"
- WT Denoting "Witness"

I, W.C. Serle, of the City of Prince George, British Columbia Land Surveyor, make oath and say that I was present at and did personally superintend the survey represented by this plan and that the survey and plan are correct. The said survey was completed on the 11 day of June 19 65

Sworn before me at PRINCE GEORGE, B.C. this 14th day of JUNE 19 65

Approved under the Land Registry Act on the 7 day of October 19 65.

Herb ...
Approving Officer

W.C. Serle
A Commissioner for taking affidavits within British Columbia

N 1/2 Lot 1571

George E. Commaneur
George E. Commaneur
George E. Commaneur
 Registrar & District
 Williams Lake, B.C.
 (by the signature of
 George E. Commaneur)

Joe Engellberts
Gandy Engellberts
Thomas ...
 (Witness as to both signatures)

Owner _____
 Witness _____
 Owner _____
 Witness _____
 Owner _____
 Witness _____