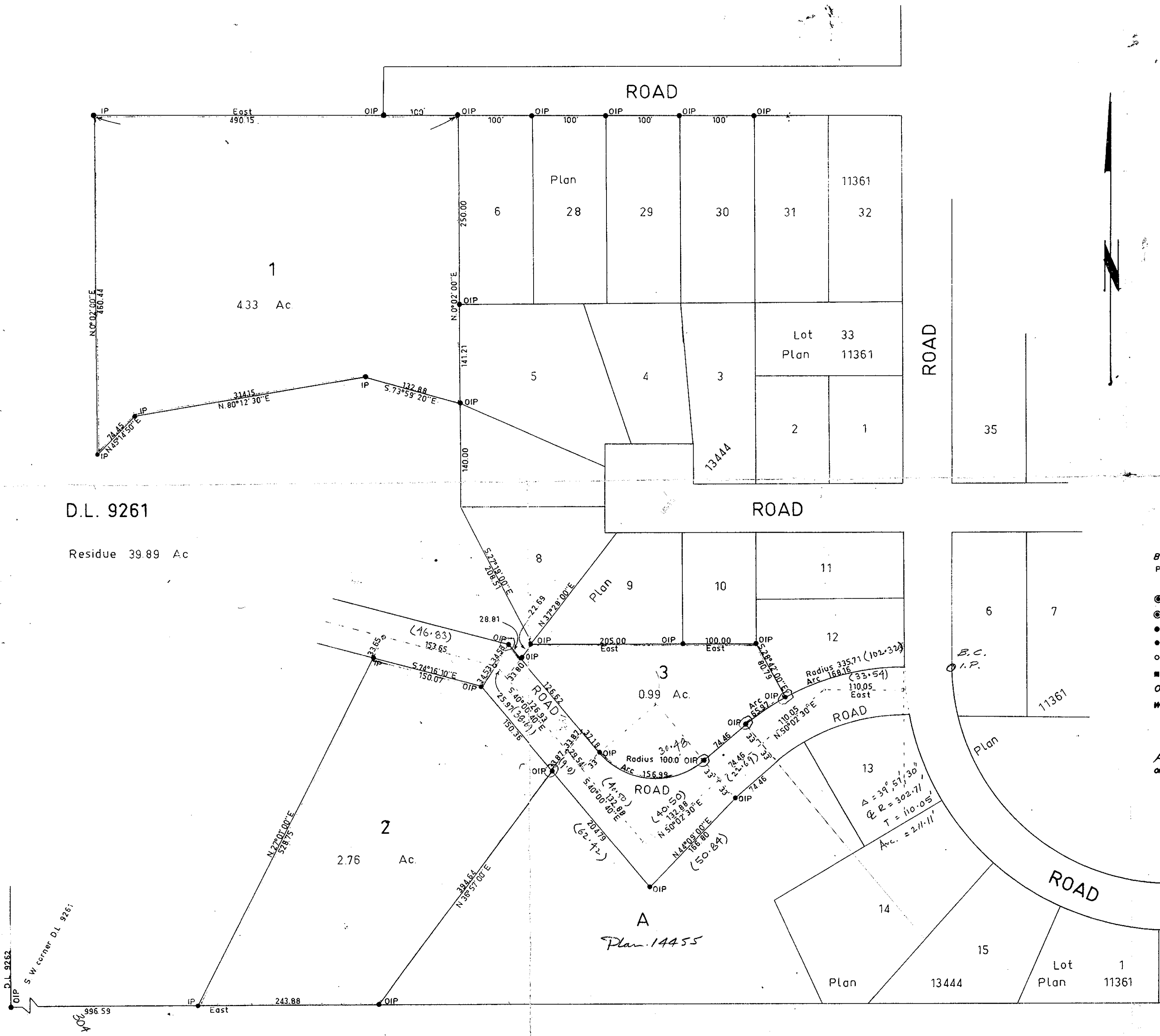


Plan of Subdivision of Part of
District Lot 9261 Cariboo District.
Except Plans 11361, 13444 and 14455.

Scale 1 inch = 100 feet

PLAN No 15467
Deposited in the Land Registry Office
at Kamloops on the 22nd day of Sept. 1965.

[Signature]
Registrar



Bearings are astronomic and are derived from
Plan 13444

- ⊙ P.con. Standard Concrete Post.
- ⊙ P.Rock Standard Rock Post.
- P.P. Standard Pipe Post.
- I.P. Standard Iron Post.
- P. Wooden Post.
- L.P. Lead Plug.
- Denoting "Old"
- WT. Denoting "Witness"

I, R.J. Goble, of the City of Prince George,
British Columbia Land Surveyor, make oath and
say that I was present at and did personally
superintend the survey represented by this
plan and that the survey and plan are correct.
The said survey was completed on
the 5th day of May, 1965.

Sworn before me at PRINCE GEORGE, B.C.
this 1st day of MAY, 1965.

[Signature]
A Commissioner for taking affidavits
within British Columbia.

Approved under the Land Registry Act
on the 7th day of JUNE, 1965.

[Signature]
Approving Officer

REAPPROVED:
[Signature]
APPROVING OFFICER, DEPT. OF LANDS,
AUGUST 25, 1965.

Owner *Ellen E. Anderson*
Witness *J. B. Malt*
OWNER *Ellen E. Anderson*
WITNESS *Ann Thoms*

McWilliam - Whyte - Serle - Goble			
B.C. Land Surveyors			
Kamloops		Prince George	
Checked	1	5	4
R.C.			
Ref No. 64309			